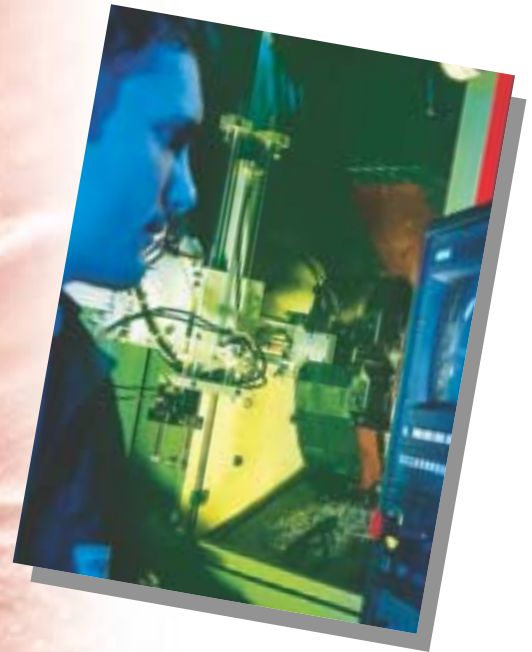


# ENERGIE DI UN GRUPPO ENERGIES OF A GROUP



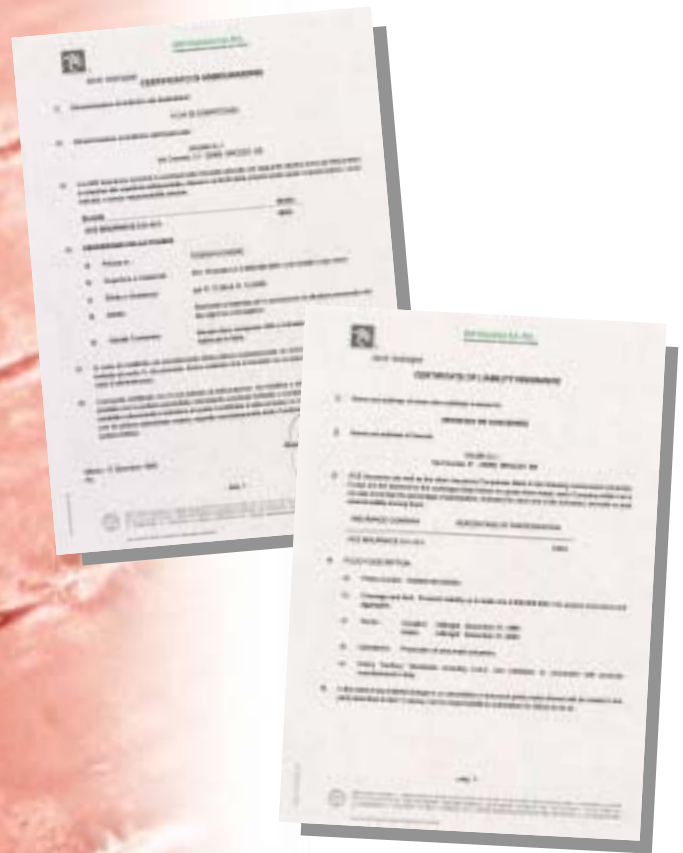
# APPROVAZIONI APPROVALS

---





# ASSICURAZIONI INSURANCE



**L'intera gamma dei prodotti Valbia é coperta da assicurazione internazionale a tutela degli utilizzatori.**

**I nostri servizi tecnici e commerciali sono a vostra completa disposizione.**

***The whole product range of Valbia is covered by international insurance for customer safety.***

***Our technical and commercial service is at your disposal.***

<b>ATTUATORI PNEUMATICI</b> <i>Pneumatic actuators</i>	<b>PAG. 17</b>
<b>VALVOLE A SFERA A 2 VIE CON ATTUATORE PNEUMATICO</b> <i>2 way ball valves with pneumatic actuator</i>	<b>PAG. 18</b>
<b>VALVOLE A SFERA A 3 VIE CON ATTUATORE PNEUMATICO</b> <i>3 way ball valves with pneumatic actuator</i>	<b>PAG. 30</b>
<b>VALVOLE PER ALTA PRESSIONE CON ATTUATORE PNEUMATICO</b> <i>High pressure ball valves with pneumatic actuator</i>	<b>PAG. 34</b>
<b>VALVOLE A FARFALLA CON ATTUATORE PNEUMATICO</b> <i>Butterfly valves with pneumatic actuator</i>	<b>PAG. 35</b>
<b>ACCESSORI</b> <i>Accessories</i>	<b>PAG. 36</b>
<b>ATTUATORI ELETTRICI</b> <i>Electric actuators</i>	<b>PAG. 52</b>
<b>VALVOLE A SFERA A 2 VIE CON ATTUATORE ELETTRICO</b> <i>2 way ball valves with electric actuator</i>	<b>PAG. 56</b>
<b>VALVOLE A SFERA A 3 VIE CON ATTUATORE ELETTRICO</b> <i>3 way ball valves with electric actuator</i>	<b>PAG. 63</b>
<b>VALVOLE A FARFALLA CON ATTUATORE ELETTRICO</b> <i>Butterfly valves with electric actuator</i>	<b>PAG. 67</b>
<b>SCHEMI ELETTRICI</b> <i>Electric wiring</i>	<b>PAG. 68</b>
<b>DOVE SIAMO</b> <i>We are here</i>	<b>PAG. 76</b>

**• VALORI NOMINALI:**

- Pressione massima utilizzo 8 bar
- Temperatura di funzionamento: standard (-20°C; +85°C), alta (-20°C; +150°C), bassa (-40°C; +85°C)
- Lubrificazione al montaggio garantita per tutta la vita dell'attuatore
- Collaudo funzionale e di tenuta al 100%

**• Nominal values:**

- Pressure rating max 8 bar
- Temperature range: standard (-20°C; +85°C), high (-20°C; +150°C), low (-40°C; +85°C)
- Pre lubricated for life of actuator on assembly
- Fully tested on manufacture 100%

**• REGOLAZIONE ROTAZIONE 0-90°:**

- Da MOD. 52 a 125
  - standard ± 5° sia oraria che antioraria mediante grani esterni alle camere in pressione
  - camma di regolazione con piani per intervento manuale
  - indicatori di posizione standard
- MOD. 160-200-270
  - standard ± 5° antioraria mediante grani nei tappi
  - kit regolazione ± 5° oraria opzionale

**• Rotation adjustment 0-90°:**

- From MOD. 52 up to 125
  - standard ± 5° in both clockwise and counterclockwise direction by means of adjusting screws outside the internal air supply chambers
  - adjusting cam with plane faces for manual intervention
  - standard optic position indicators
- MOD. 160-200-270
  - standard ± 5° in counterclockwise direction by means of adjusting screws in the caps
  - kit for ± 5° in clockwise direction available on request

**• TAPPI DI CHIUSURA IN ALLUMINIO PRESSOFUSO:**

- Copertura standard in polvere di poliestere
- A richiesta copertura con nichelatura chimica per ambienti corrosivi

**• Die cast aluminium end caps:**

- Standard polyester powder coated
- Upon request nickel - plated for corrosive environments

**• MOLLE CONCENTRICHE:**

- Trattamento standard di fosfatazione
- Elevata resistenza e affidabilità nel tempo
- Versatilità di coppia in funzione alla pressione disponibile variandone il set
- Viti fissaggio tappi sufficientemente lunghe per consentire distensione molle in caso di manutenzione interna all'attuatore
- Ingombro attuatore identico per le versioni DA/SR

**• Concentric spring sets:**

- Standard treatment phosphated
- High resistance and reliability
- Spring sets to suit different air pressure/torque requirements
- Long securing screws to allow safe dismantling for maintenance
- Same body dimensions for DA/SR versions

**• VITI ASSEMBLAGGIO:**

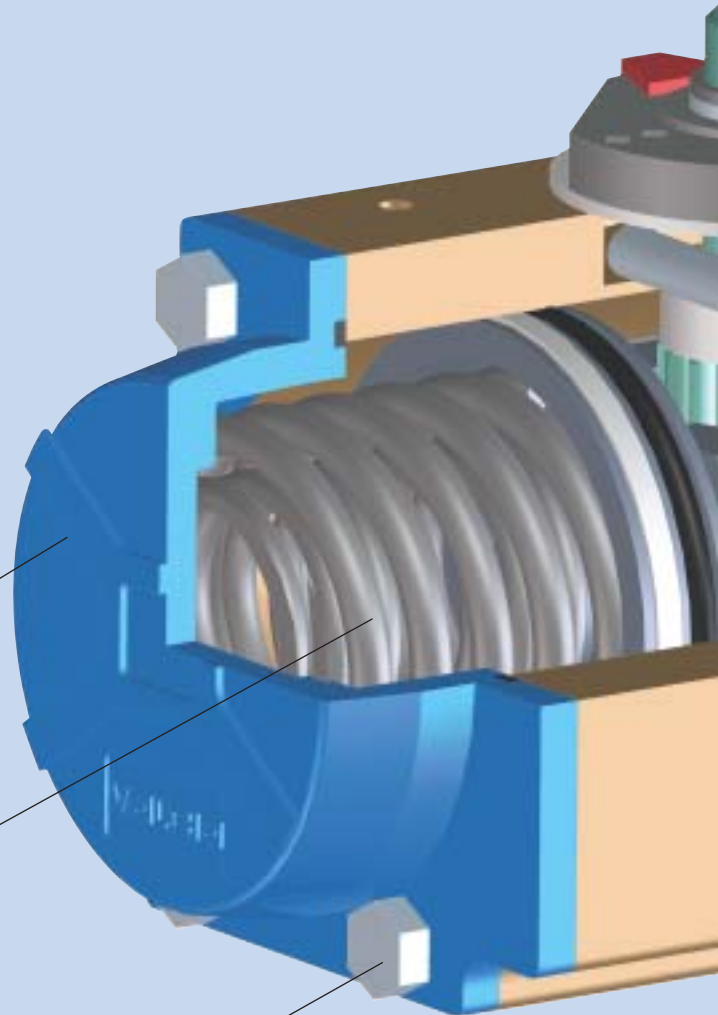
- Standard acciaio inox
- **Assembling screw:**
- Stainless steel as standard

**• UTILIZZI:**

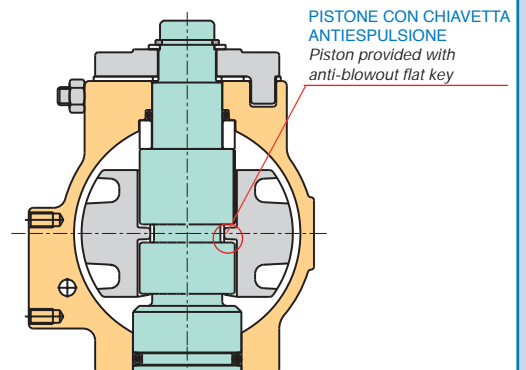
- Sporgenza pignone secondo norma Namur
- Attacco elettrovalvole secondo norma Namur
- Collegamento attuatore/valvola secondo ISO 5211-DIN 3337

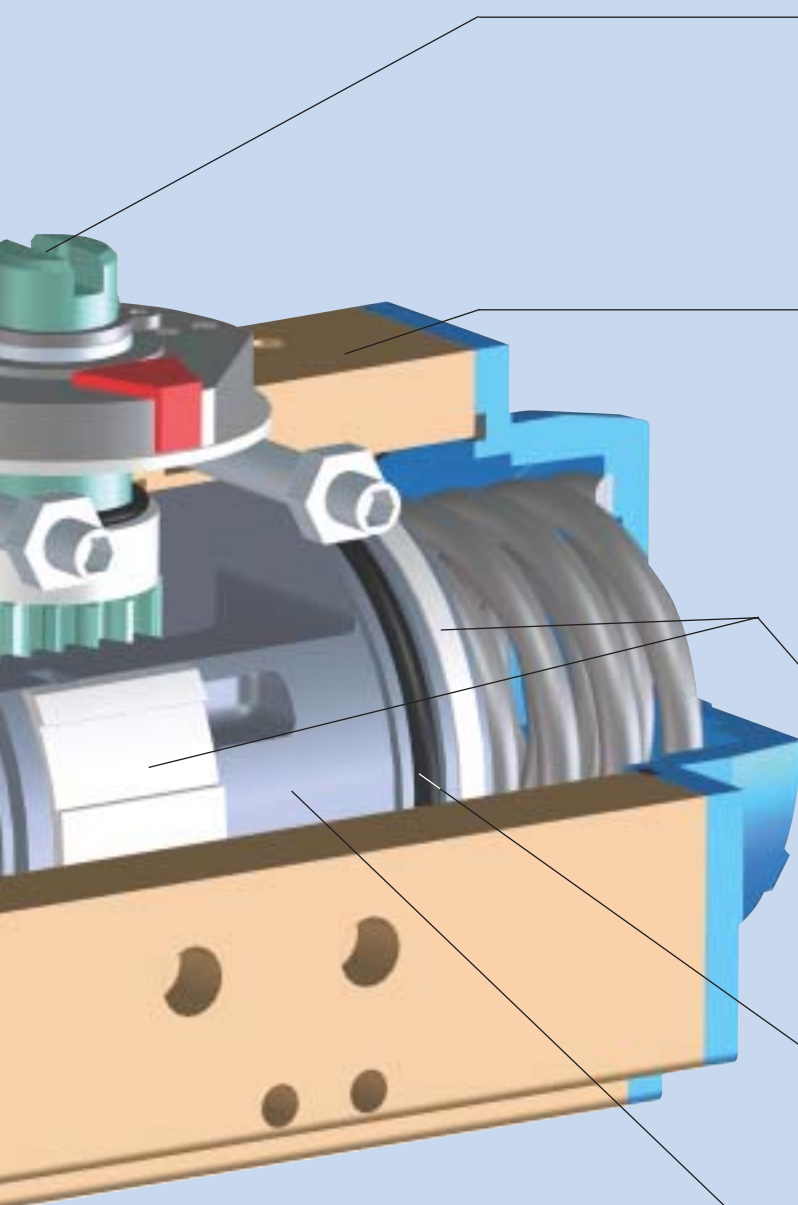
**• External connection:**

- Top of pinion according to Namur norm
- Solenoid valve connection according to Namur norm
- Bottom of pinion according to ISO 5211-DIN 3337



**SISTEMA ANTIESPULSIONE  
ANTI-BLOWOUT SYSTEM**



**• PIGNONE IN ACCIAIO:**

- Trattamento standard di nichelatura chimica resistente alla corrosione interna ed esterna
- In acciaio inox a richiesta
- Sistema antiespulsione

**• Pinion made in steel:**

- *Nichel-plated for standard version against internal and external corrosion*
- *Stainless steel for corrosive environments*
- *Anti-blowout design*

**• CORPO IN ALLUMINIO ESTRUSO UNI 6060:**

- Per lo standard trattamento di ossidazione dura 45-50 (micron)
- Alta resistenza all'usura
- Idoneo ad ambienti corrosivi
- A richiesta trattamento di nichelatura o copertura con vernici epossidiche
- L'elevato grado di finitura superficiale interna riduce l'attrito aumentando la durata dei componenti

**• Body manufactured from extruded aluminum UNI 6060:**

- *Hard-coat anodized as standard finish 45-50 (micron)*
- *Good wear resistance*
- *High corrosion resistance*
- *Special finishes nichel-plating or epoxy coated*
- *Bore finished to high standard to ensure low friction and long life*

**• GUIDE IN POM STANDARD:**

- Ampia area di contatto
- Ottima scorrevolezza in quanto autolubrificante
- Elevata durata

**• Piston guides in POM:**

- Large contact area
- Low friction for self lubricating material
- Long life

**• GUARNIZIONI:**

- NBR versione standard
- Viton versione alta temperatura
- HNBR versione bassa temperatura

**• Seals:**

- NBR standard version
- Viton high temperature version
- HNBR low temperature version

**• PISTONI IN ALLUMINIO PRESSOFUSO STANDARD:**

- Con trattamento di nichelatura chimica a richiesta
- *Pistons made from die cast aluminium:*
- *Chemical nickel plating upon request*

**• ACCOPPIAMENTO****PIGNONE CREMAGLIERA:**

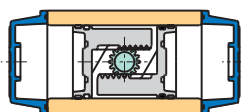
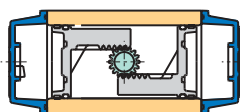
- Momento torcente costante
- Attuatore compatto
- Forze interne bilanciate
- La robustezza garantisce una elevata durata

**• Twin rack and pinion design:**

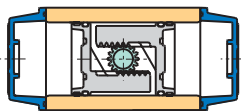
- Constant torque output
- Compact design
- Balanced internal forces
- Robust design to ensure long life

**VARIANTI DI MONTAGGIO**

Mounting Variations

**CHIUSO - Closed****APERTO - Open**

ROTAZIONE ANTIORARIA - Counterclockwise Rotation

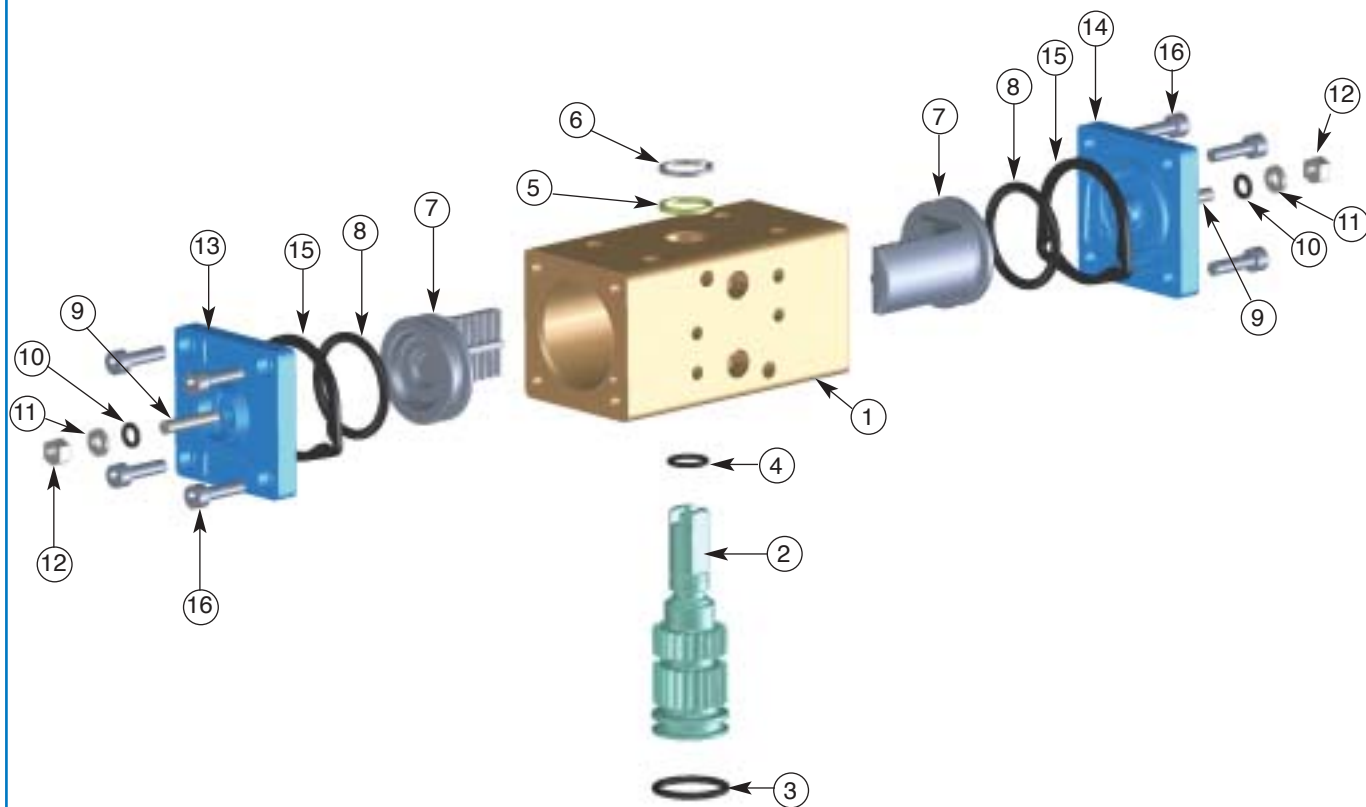


ROTAZIONE ORARIA - Clockwise Rotation

**VISTA LATO SPORGENZA PIGNONE**

View from the top of the pinion

MOD. 32



POSIZ. Item	DESCRIZIONE Description	MATERIALE Material	TRATTAMENTO Treatment	Q.TA' DA
1	Corpo / Body	Alluminio estruso / Extruded aluminium	Ossidato duro / Hard anodized	1
2	Pignone antiespulsione / Anti-blowout pinion	Acciaio / Steel	Nichelato / Nickel plated	1
• 3	O-ring inf. pignone / Lower pinion o-ring	NBR		1
• 4	O-ring sup. pignone / Top pinion o-ring	NBR		1
• 5	Anello distanziale / Spacer ring	POM		1
6	Seeger pignone / Pinion snap ring	Acciaio / Steel	Nichelato / Nickel plated	1
7	Pistone / Piston	Alluminio pressofuso / Die cast aluminium		2
• 8	O-ring pistone / Piston o-ring	NBR		2
9	Grano di regolazione / Stop bolt	Acciaio inox / Stainless steel		2
• 10	O-ring grano di regolazione / Stop bolt o-ring	NBR		2
11	Rondella / Washer	Acciaio inox / Stainless steel		2
12	Dado di bloccaggio regolazione / Stop bolt retaining nut	Acciaio inox / Stainless steel		2
13	Tappo sinistro / Left end cap	Alluminio pressofuso / Die cast aluminium	Verniciato / Painted	1
14	Tappo destro / Right end cap	Alluminio pressofuso / Die cast aluminium	Verniciato / Painted	1
15	Guarnizioni Tappi / End cap seats	NBR		2
16	Vite di serraggio tappi / End cap fixing screw	Acciaio inox / Stainless steel		8

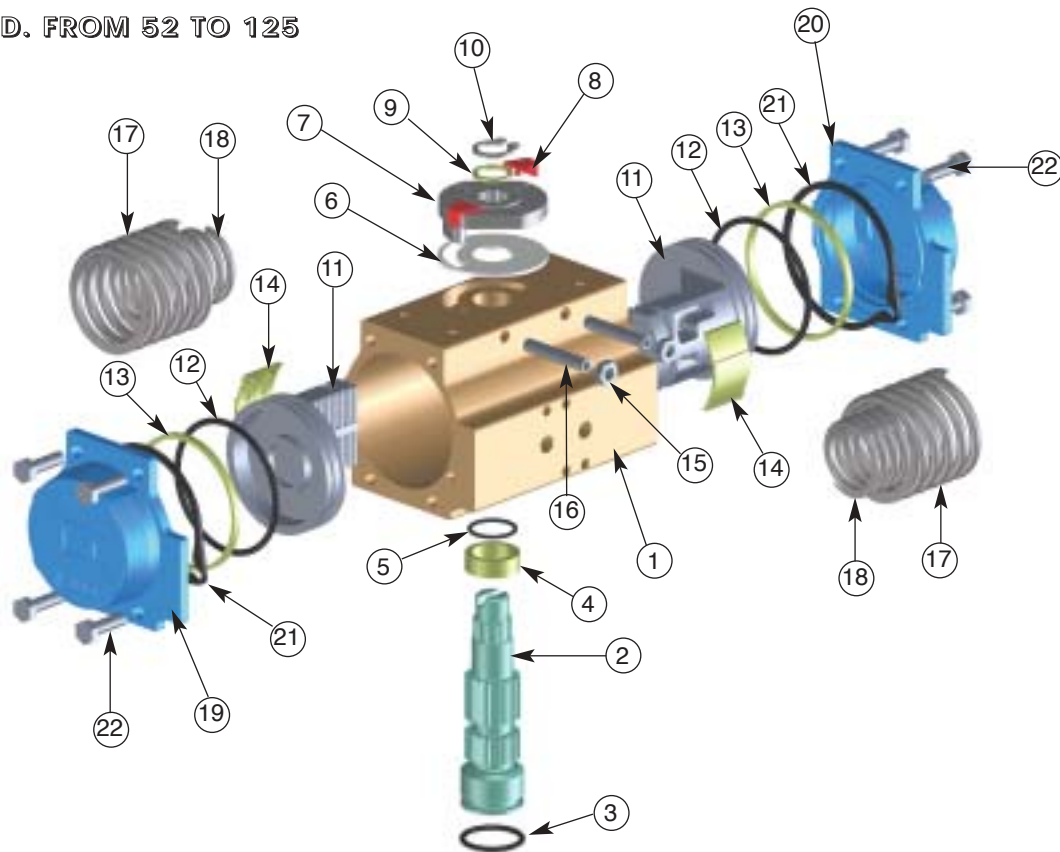
• **PARTICOLARI SOGGETTI AD USURA** / Parts subject to wear



## ACTUATOR PARTS

## MOD. DAL 52 AL 125

MOD. FROM 52 TO 125

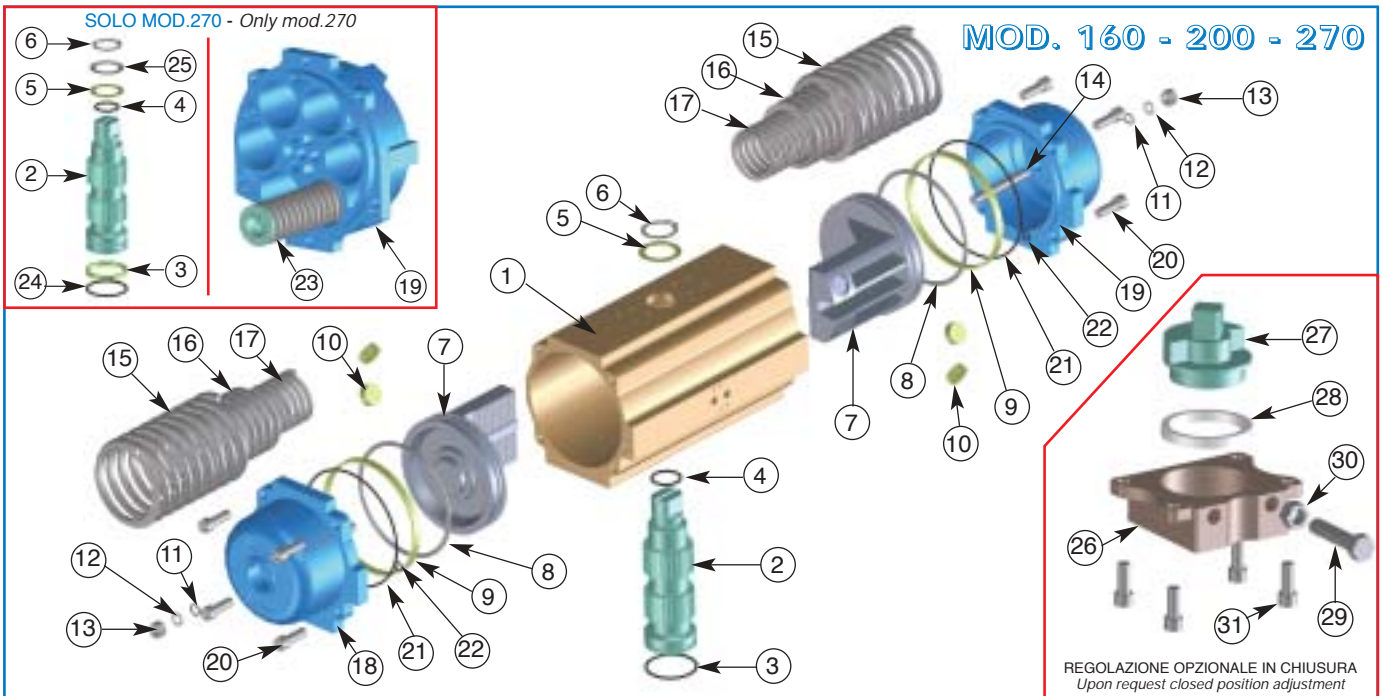


POSIZ. Item	DESCRIZIONE Description	MATERIALE Material	TRATTAMENTO Treatment	Q.TA' DA	Q.TA' SR
1	Corpo / Body	Alluminio estruso / Extruded aluminium	Ossidato duro / Hard anodized	1	1
2	Pignone antiespulsione / Anti-blowout pinion	Acciaio / Steel	Nichelato / Nickel plated	1	1
• 3	O-ring inf. pignone / Lower pinion o-ring	NBR		1	1
• 4	Anello distanziale pignone / Pinion spacer ring	POM		1	1
• 5	O-ring sup. pignone / Top pinion o-ring	NBR		1	1
• 6	Anello distanziale camma / Cam spacer ring	POM		1	1
☐ 7	Camma / Cam	Acciaio inox / Stainless steel		1	1
8	Indicatore di posizione / Position indicator	Nylon		2	2
9	Rondella pignone / Pinion washer	Acciaio inox / Stainless steel		1	1
**10	Seeger pignone / Pinion snap ring	Acciaio / Steel	Nichelato / Nickel plated	1	1
11	Pistone / Piston	Alluminio pressofuso / Die cast aluminium		2	2
• 12	O-ring pistone / Piston o-ring	NBR		2	2
• 13	Anello antifrizione / Antifriction ring	POM		2	2
• 14	Pattino reggispira pistone / Piston thrust block	POM		2	2
15	Dado di bloccaggio reg. / Stop bolt retaining nut	Acciaio inox / Stainless steel		2	2
16	Grano di regolazione / Stop bolt	Acciaio inox / Stainless steel		2	2
17	Molla esterna / External spring	Acciaio / Steel	Fosfatata / Zinc-phosphate	0	Vedi set molle pagina 15 See spring setting at page 15
18	Molla interna / Internal spring	Acciaio / Steel	Fosfatata / Zinc-phosphate	0	
19	Tappo sinistro / Left end cap	Alluminio pressofuso / Die cast aluminium	Verniciato / Painted	1	1
20	Tappo destro / Right end cap	Alluminio pressofuso / Die cast aluminium	Verniciato / Painted	1	1
21	Guarnizioni Tappi / End cap seats	NBR		2	2
22	Vite di serraggio tappi / End cap fixing screw	Acciaio inox / Stainless steel		8	8

• PARTICOLARI SOGGETTI AD USURA / Parts subject to wear      \*\* SERIE RINFORZATA DIN 471 - UNI 7436 / Reinforced series DIN 471 - UNI 7436

☐ FINO AL 01/09/2002 IN ACCIAIO NICHELATO / Until 01/09/2002 in nickeled steel

ACTUATOR PARTS

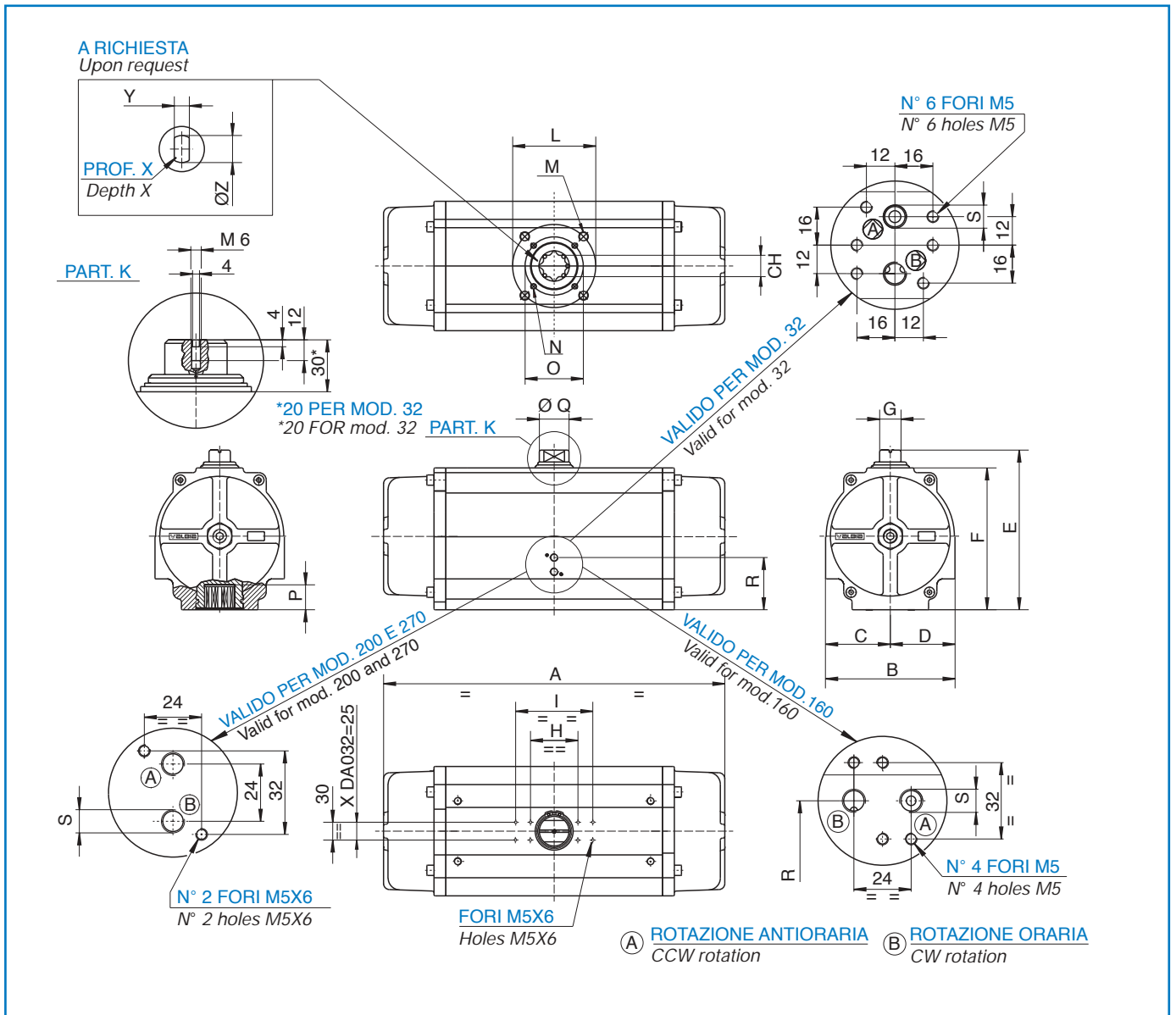


POSIZ. / Item	DESCRIZIONE / Description	MATERIALE / Material	TRATTAMENTO / Treatment	Q.TA' / DA	Q.TA' / SR	
1	Corpo / Body	Alluminio estruso / Extruded aluminium	Ossidato duro / Hard anodized	1	1	
2	Pignone antiespulsione / Anti-blowout pinion	Acciaio / Steel	Nichelato / Nickel plated	1	1	
• 3	O-ring inf. pignone / Lower pinion o-ring	NBR		1	1	
• 4	O-ring sup. pignone / Top pinion o-ring	NBR		1	1	
• 5	Anello distanziale pignone / Pinion spacer ring	POM		1	1	
6	Seeger pignone / Pinion snap ring	Acciaio / Steel	Nichelato / Nickel plated	1	1	
7	Pistone / Piston	Alluminio pressofuso / Die cast aluminium		2	2	
• 8	O-ring pistone / Piston o-ring	NBR		2	2	
• 9	Anello antifrizione / Antifriction ring	PTFE 15% grafite / PTFE 15% graphite		2	2	
• 10	Pattino reggispinta pistone / Piston thrust block	POM		4 [6]	4 [6]	
• 11	O-ring vite di regolazione / Stop bolt o-ring	NBR		2	2	
12	Rondella / Washer	Acciaio inox / Stainless steel		2	2	
13	Dado di bloccaggio reg. / Stop bolt retaining nut	Acciaio inox / Stainless steel		2	2	
14	Grano di regolazione / Stop bolt	Acciaio inox / Stainless steel		2	2	
15	Molla esterna / External spring	Acciaio / Steel	Fosfatata / Zinc-phosphate	0	Vedi set molle pagina 15 See spring setting at page 15	
16	Molla centrale / Central spring	Acciaio / Steel	Fosfatata / Zinc-phosphate	0		
17	Molla interna / Intenal spring	Acciaio / Steel	Fosfatata / Zinc-phosphate	0		
18	Tappo sinistro / Left end cap	Alluminio pressofuso / Die cast aluminium	Verniciato / Painted	1	1	
19	Tappo destro / Right end cap	Alluminio pressofuso / Die cast aluminium	Verniciato / Painted	1	1	
20	Vite di serraggio tappi / End cap fixing screw	Acciaio inox / Stainless steel		8 (12)	8 (12)	
21	O-ring tappi / End cap o-ring	NBR		2	2	
22	O-ring foro alimentazione / End cap fixing screw	NBR		2	2	
23	Molla precompressa / Precompressed spring ***	Acciaio / Steel	Fosfatata / Zinc-phosphate	0	Vedi set molle pag.15 See spring setting pag.15	
• 24	Anello antifrizione / Antifriction ring ***	PTFE 15% grafite / PTFE 15% graphite		1		1
25	Rondella pignone / Pinion washer ***	Acciaio inox / Stainless steel		1		1
<b>REGOLAZIONE OPZIONALE IN CHIUSURA / Upon request closed position adjustment</b>						
26	Piastra / Plate	GGG40	Verniciato / Painted	1	1	
27	Giunto / Coupling	Acciaio / Steel	Nichelato / Nickel plated	1	1	
• 28	Anello antifrizione / Antifriction ring	PTFE		1	1	
29	Vite di regolazione / Stop screw	Acciaio / Steel	Zincato / Zinc plated	1	1	
30	Dado di bloccaggio reg. / Stop bolt retaining nut	Acciaio inox / Stainless steel		1	1	
31	Viti di fissaggio / Fixing screws	Acciaio inox / Stainless steel		4	4	

• PARTICOLARI SOGGETTI AD USURA / Parts subject to wear

[6] [12] \*\*\* VALE SOLO PER MOD.270 / Valid for mod. 270 only





MOD.	FORATURA ISO 5211	CH	A	B	C	D	E	F	G	H	I	L	M	N	O	P	ØQ	R	S ISO 711	T	U	V	W	ØZ	Y	X
32	F03	9	110	45	22.5	22.5	65	45	10	50	-	36	M5X7.5	-	-	12	11.8	-	1/8"	-	-	-	-	12.1	9	16
160	F10 - F12	27	522	187	87	100	218	188	30	80	130	125	M12X18	M10X15	102	32	35	81.5	1/4"	160	45	56	63.5	36.2	27	48
200	F14	36	575	218	109	109	269	239	36	80	130	140	M16X25	-	-	39	50	88	1/4"	190	51.5	64	79	48.2	36	64
270	F16	46**	672	290	145	145	361	331	36	80	130	165	M20X30	-	-	52	50	121	1/4"	230	68	79	111	60.2	46	82

\*\* SOLO QUADRO A 45°  
\*\* only with square connection at 45°

**KIT PER REGOLAZIONE IN CHIUSURA OPZIONALE PER MOD. 160 - 200 - 270**  
Kit for closed position adjustment optional mod. 160 - 200 - 270

**PER ORDINAZIONE KIT**  
For order kit

MOD. 160	RI 3180
MOD. 200	RI 3181
MOD. 270	RI 3182

TEMPI DI MANOVRA (SEC.) / Working time (sec.)												
VERSIONE Type	MODELLO Model	32	52	63	75	85	100	115	125	160	200	270
		ROTAZIONE ANTIORARIA Counterclockwise rotation	CCW	0.03	0.03	0.06	0.12	0.20	0.30	0.53	0.83	1.15
ROTAZIONE ORARIA Clockwise rotation	CW	0.03	0.04	0.08	0.12	0.19	0.27	0.47	0.66	1.10	1.70	4.50
ROTAZIONE ANTIORARIA Counterclockwise rotation	CCW SR	-	0.09	0.14	0.22	0.31	0.44	0.83	1.08	1.75	2.38	4.50
ROTAZIONE ORARIA Clockwise rotation	CW SR	-	0.09	0.14	0.22	0.33	0.46	0.78	0.90	1.34	2.19	6.20

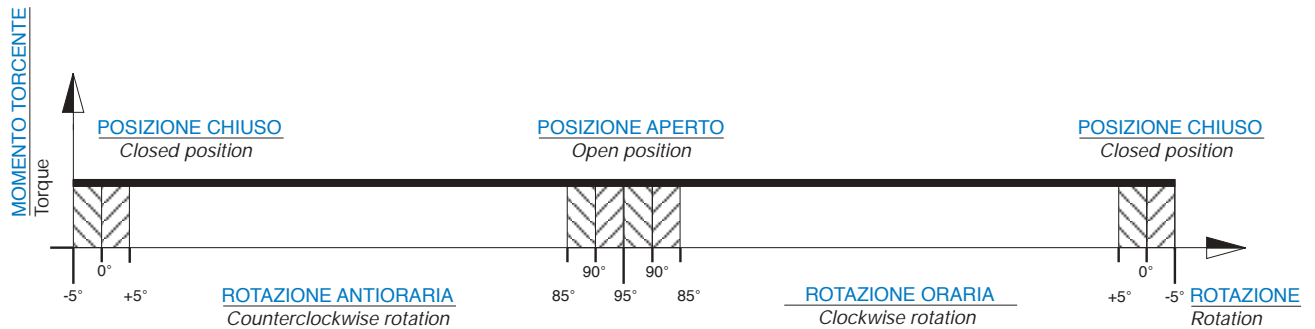
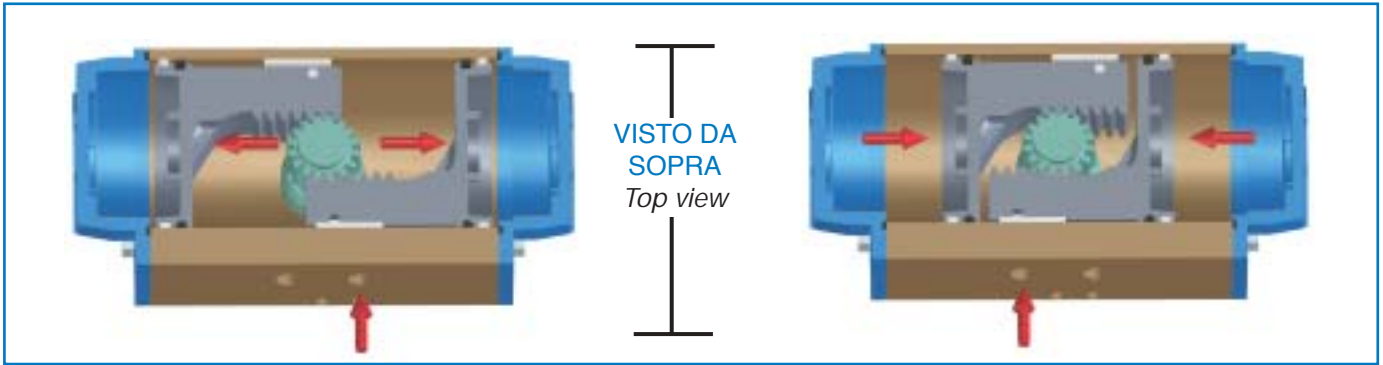
TEMPI INDICATIVI OTTENUTI CON PRESSIONE 6 bar SENZA VALVOLA APPLICATA  
Approximative times obtained at the pressure of 6 bar without valve

TABELLA PESI (KG) / Weight chart (kg)												
VERSIONE Type	MODELLO Model	32	52	63	75	85	100	115	125	160	200	270
		DA 90°		0.48	1.05	1.50	2.55	3.40	5.05	8.00	10.00	19.50
SR 90°		-	1.20	1.80	3.20	4.30	6.55	10.60	13.40	24.40	50.50	88.00

TABELLA DI CONSUMO D'ARIA ATTUATORI Actuator air consumption chart												LITRI: 1 litro = 1000 cm <sup>3</sup> Litres: 1 litre = 1000 cm <sup>3</sup>	
VERSIONE Type	MODELLO Model	32	52	63	75	85	100	115	125	160	200	270	
		ROTAZIONE ANTIORARIA Counterclockwise rotation	CCW	0.04	0.10	0.19	0.36	0.51	0.79	1.29	1.63	3.61	5.70
ROTAZIONE ORARIA Clockwise rotation	CW	0.03	0.13	0.23	0.44	0.64	1.00	1.71	2.21	4.76	9.83	17.8	
ROTAZIONE ORARIA SR Clockwise rotation SR	CW SR	-	0.11	0.19	0.36	0.53	0.80	1.38	1.78	3.52	7.58	15.5	

PER OTTENERE IL CONSUMO D'ARIA IN NI/min. MOLTIPLICARE IL VALORE IN TABELLA PER I PARAMETRI IN USO CIOE' PER LA PRESSIONE DI ALIMENTAZIONE ED IL NUMERO DI CORSE/MINUTO.

To obtain the air consumption in NI/min. multiply the value in the chart for the used parameters. That's to say for the supplied pressure and the number of strokes in a minute.



Dal Grafico riportato si può notare che la coppia di un attuatore a doppio effetto si mantiene costante lungo tutta la manovra. L'utente potrà procedere alla scelta del modello idoneo alle proprie esigenze basandosi sulle seguenti indicazioni:

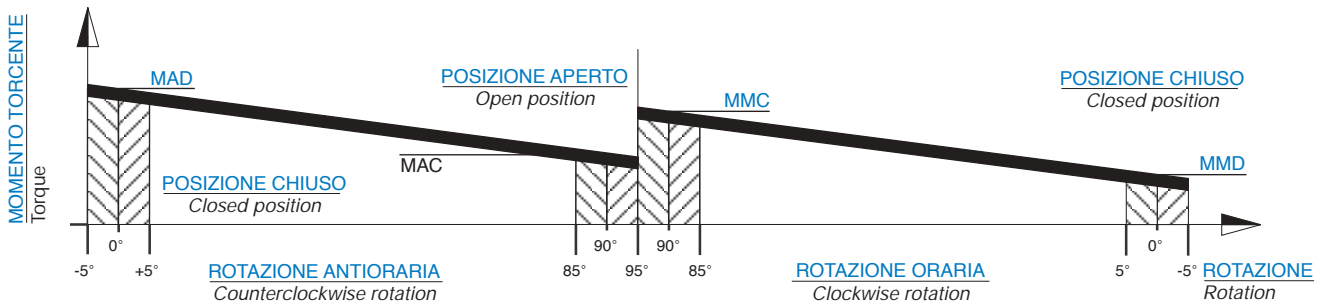
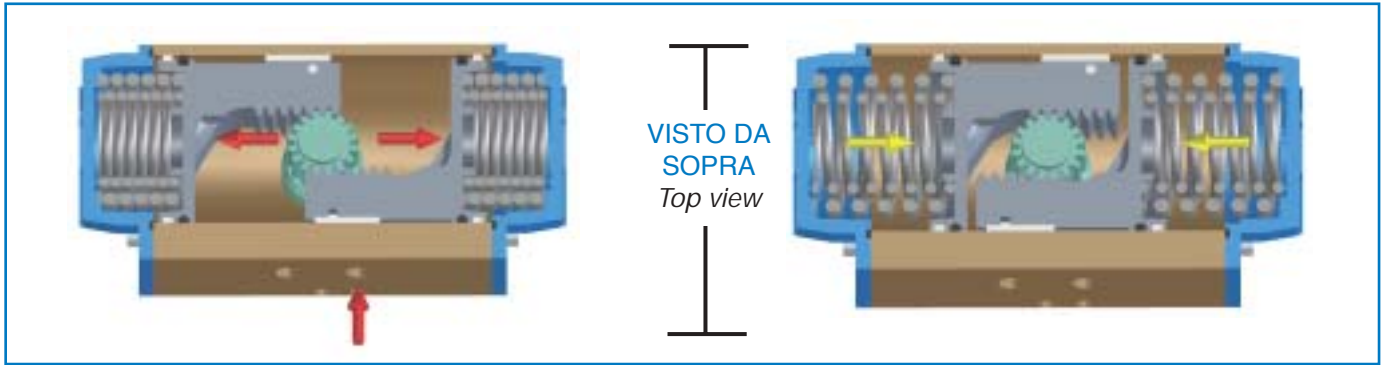
1. Verificare la coppia di spunto massima della valvola da automatizzare.
2. Aumentare del 25%-50% (dipende dal tipo di valvola e dalle condizioni di esercizio) il valore della coppia di spunto verificata, stabilendo così un coefficiente di sicurezza.
3. Ottenuto in questo modo il valore di coppia consigliato, si ricerca nella tabella dei momenti torcenti (in corrispondenza della pressione disponibile) un valore di coppia uguale o simile (comunque non inferiore) a quello ottenuto.
4. Trovato il valore basterà spostarsi in orizzontale verso sinistra nella colonna "modello" per avere la misura dell'attuatore adatto.

With reference to the above diagram it can be noted that the torque of a double acting actuator remains constant through-out the complete action.

The user can decide on which model to choose according to his/her own specific requirements, using the following guidelines:

1. Define the maximum torque of the valve to automate.
2. To obtain a safety factor increase the torque value chosen by 25%-50% (subject to the type of valve and working conditions).
3. Once the torque value suggested is obtained consult the torque chart and in relation to the corresponding air pressure find a torque value exact to or exceeding the one obtained.
4. Once the torque value is determined move horizontally to the column "model" to find the actuator model required.

MODELLO Type	PRESSIONE DI ALIMENTAZIONE (bar) / Air supply pressure (bar)							
	2,5	3	4	5	5,5	6	7	8
MOMENTO TORCENTE ATTUATORI A DOPPIO EFFETTO (Nm) / Torque output double acting actuators (Nm)								
DA 32	3.5	4.2	6	7.5	8	9	10	11.5
DA 52	8.8	10.7	14.5	18.3	20.2	22.1	25.9	29.8
DA 63	15.6	19.1	25.9	32.8	36.2	39.6	46.5	53.3
DA 75	28.9	35.1	47.5	59.8	66	72.2	84.5	96.9
DA 85	41.4	50.4	68.6	86.7	95.8	104.9	123	141.2
DA 100	65.7	79.8	108	136.3	150.4	164.6	192.8	221.1
DA 115	108.8	132.2	178.9	225.6	248.9	272.3	319	365.7
DA 125	143.3	174	235.3	296.6	327.3	358	419.3	480.6
DA 160	300	360	480	600	660	720	840	960
DA 200	562	675	900	1125	1237	1350	1575	1800
DA 270	1304	1565	2086	2608	2869	3130	3651	4173



Dal grafico riportato si può notare che la coppia di un attuatore a semplice effetto non è costante ma decrescente. Questo è dovuto all'azione delle molle che si comprimono opponendosi al movimento dei pistoni, accumulando energia che sarà resa disponibile in modo decrescente durante l'inversione della rotazione.

La coppia dall'attuatore è quindi caratterizzata da 4 valori fondamentali.

**Rotazione in apertura**

MAD = Coppia attuatore con molle distese

MAC = Coppia attuatore con molle compresse

**Rotazione in chiusura**

MMC = Coppia molle compresse

MMD = Coppia molle distese

L'utilizzatore potrà procedere alla scelta del modello idoneo alle proprie esigenze basandosi sulle seguenti indicazioni:

1. Verificare la coppia di spunto massima della valvola da automatizzare.
2. Aumentare del 25%-50% (dipende dal tipo di valvola e dalle condizioni di esercizio) il valore della coppia di spunto verificata, stabilendo così un coefficiente di sicurezza.
3. Ottenuto in questo modo il valore di coppia consigliato, si ricerca nella tabella dei momenti torcenti (in corrispondenza della pressione disponibile) un valore di coppia uguale o simile (comunque non inferiore) a quello ottenuto considerando però il valore più basso tra i valori MMD e MAC.
4. Trovato il valore basterà spostarsi in orizzontale verso sinistra nella colonna "modello" per avere la misura dell'attuatore adatto.

With reference to the above diagram the torque of a spring return actuator is not constant but decreasing. This is due to the action of the springs that when compressed during air actuation counteract the piston movement and accumulate energy which will be available in a decreasing way during the rotation inversion.

The torque given by the actuator is defined by four fundamental values.

**Opening rotation**

MAD = Actuator torque with unfolded springs

MAC = Actuator torque with compressed springs.

**Closing rotation**

MMC = Torque with compressed springs.

MMD = Torque with unfolded springs

The user can decide on which model to chose according to his/her own specific requirements, using the following guidelines:

1. Define the maximum torque of the valve to automate.
2. To obtain a safety factor increase the torque value chosen by 25% - 50% (subject to the type of valve and working conditions).
3. Once the torque value suggested is obtained consult the torque chart and in relation to the corresponding air pressure find the torque value exact to or exceeding the one obtained, taking account of the lower value between the MMD and MAC values.
4. Once the torque value is determined move horizontally to the column "model" to find the actuator model required.

**SET DI MOLLE Spring setting**

SET	MOLLA ESTERNA External spring	MOLLA INTERNA Internal spring
01	1	1
02	2	/
03	1	2
04	2	1
05	2	2

**VALIDO DA MOD. 52 A MOD. 125**  
Valid from mod. 52 to mod. 125

**SET DI MOLLE Spring setting**

SET	MOLLA ESTERNA External spring	MOLLA CENTRALE Central spring	MOLLA INTERNA Internal spring
01	/	2	/
02	2	/	/
03	1	2	/
04	2	/	2
05	2	2	/
06	2	2	2

**VALIDO PER MOD. 160 E 200**  
Valid for mod. 160 and 200

**SET DI MOLLE Spring setting**

**MOLLA UNICA PRECOMPRESSA**  
Pretensioned spring

SET	N° MOLLE PER LATO N° of springs for each side
01	2/3
02	3/3
03	3/4
04	4/4
05	4/5
06	5/5
07	5/6
08	6/6

**VALIDO PER MOD. 270**  
Valid for mod. 270

MOD	SET	MOMENTO MOLLE (Nm) Spring torque (Nm)		PRESSIONE ALIMENTAZIONE (bar) / Air supply pressure (bar)																
				2,5		3		4		5		5,5		6		7		8		
		0° MMD	90° MMC	MOMENTO TORCENTE ATTUATORI A SEMPLICE EFFETTO (Nm) / Torque output spring return actuators (Nm)																
		0° MAD	90° MAC	0° MAD	90° MAC	0° MAD	90° MAC	0° MAD	90° MAC	0° MAD	90° MAC	0° MAD	90° MAC	0° MAD	90° MAC	0° MAD	90° MAC	0° MAD	90° MAC	
SR52	01	3.6	4.9	4.5	1.6	6.4	3.5	10.2	7.4											
	02	4.8	6.7			5.2	1.7	9.0	5.6	12.8	9.4									
	03	5.2	7.5					8.6	4.8	12.4	8.6	14.3	10.5	16.2	12.4					
	04	6.5	9.3					7.3	3.0	11.2	6.8	13.1	8.7	15.0	10.6	18.8	14.5			
	05	8.1	11.9							9.5	4.3	11.4	6.2	13.3	8.1	17.1	11.9	20.9	15.7	
SR63	01	5.0	9.6	8.6	2.6	12.0	6.0	18.9	12.8											
	02	6.6	12.3			10.5	3.2	17.4	10.1	24.2	17.0									
	03	8.0	14.5					15.9	7.9	22.8	14.8	26.2	18.2	29.6	21.7					
	04	9.6	17.2					14.4	5.2	21.2	12.0	24.6	15.5	28.1	18.9	34.9	25.8			
	05	12.5	22.1							18.2	7.1	21.7	10.6	25.1	14.0	31.9	20.9	38.8	27.7	
SR75	01	10.1	19.5	15.8	3.9	22.0	10.1	34.4	22.5											
	02	13.3	25.6			18.8	4.0	31.2	16.4	43.5	28.7									
	03	15.1	28.2					29.4	13.8	41.8	26.1	48.0	32.3	54.1	38.5					
	04	18.3	34.3					26.2	7.7	38.6	20.0	44.8	26.2	50.9	32.4	63.3	44.8			
	05	23.2	43.0							33.6	11.3	39.8	17.5	46.0	23.7	58.3	36.1	70.7	48.4	
SR85	01	16.1	27.3	22.2	7.6	31.3	16.6	49.5	34.8											
	02	19.9	33.7			27.6	10.3	45.7	28.4	63.9	46.6									
	03	24.3	40.8					41.3	21.3	59.4	39.5	68.5	48.6	77.6	57.6					
	04	28.1	47.1					37.5	15.0	55.7	33.1	64.8	42.2	73.8	51.3	92.0	69.4			
	05	36.3	60.6							47.5	19.6	56.6	28.7	65.6	37.8	83.8	55.9	101.9	74.1	
SR100	01	24.6	44.6	36.0	10.1	50.2	24.2	78.4	52.5											
	02	32.6	58.9			42.2	9.9	70.5	38.1	98.7	66.4									
	03	35.9	63.7					67.1	33.3	95.4	61.6	109.5	75.7	123.6	89.9					
	04	43.9	78.0					59.1	19.0	87.4	47.3	101.5	61.4	115.7	75.5	143.9	103.8			
	05	55.2	97.2							76.1	28.1	90.2	42.3	104.3	56.4	132.6	84.7	160.8	112.9	
SR115	01	41.0	74.4	61.3	18.4	84.7	41.8	131.4	88.5											
	02	50.7	94.4			74.9	21.8	121.6	68.5	168.3	115.2									
	03	60.8	108.1					111.6	54.7	158.3	101.5	181.6	124.8	205.0	148.2					
	04	70.6	128.1					101.8	34.8	148.5	81.5	171.9	104.9	195.2	128.2	241.9	174.9			
	05	90.4	161.8							128.7	47.8	152.0	71.1	175.4	94.5	222.1	141.2	268.8	187.9	
SR125	01	53.1	99.1	80.2	21.2	110.9	51.9	172.2	113.2											
	02	63.3	117.5			100.7	33.5	162.1	94.8	223.4	156.1									
	03	81.1	148.4					144.2	63.9	205.5	125.2	236.2	155.9	266.8	186.5					
	04	91.3	166.9					134.1	45.5	195.4	106.8	226.1	137.5	256.7	168.1	318.0	229.4			
	05	119.2	216.2							167.4	57.5	198.1	88.1	228.7	118.8	290.1	180.1	351.4	241.4	
SR160	01	100	152	186	126	245	188													
	02	147	225			198	116	317	234											
	03	173	264			170	74	290	193	407	311									
	04	200	321					260	136	378	255	437	312							
	05	252	376							330	191	388	251	447	310					
	06	300	473									335	161	395	220	512	332	627	445	
SR200	01	174	245	362	270	472	387													
	02	247	356			398	273	621	498											
	03	298	424			344	192	568	425	789	649									
	04	353	531					510	317	731	541	842	651							
	05	421	602							655	447	767	562	878	675					
	06	527	776									662	396	777	510	994	721	1209	935	
SR270	01	505	788	834	545	1109	819	1658	1368											
	02	606	946	726	379	1001	654	1550	1203											
	03	707	1103	619	214	893	488	1442	1037	1991	1586									
	04	808	1261	511	48	785	323	1334	872	1884	1421	2158	1695							
	05	909	1418			678	157	1227	706	1776	1255	2050	1530	2325	1804					
	06	1010	1576					1119	540	1668	1090	1943	1364	2217	1639					
	07	1111	1733					1011	375	1560	924	1835	1198	2109	1473	2659	2022			
	08	1213	1891					904	209	1453	758	1727	1033	2002	1307	2551	1856	3100	2405	





**VALBIA** srl OLTRE A PROPORRE UNA VASTA GAMMA DI VALVOLE MOTORIZZATE ED ACCESSORI OFFRE UN SERVIZIO "SERVICE CENTRE" DOVE APPLICAZIONI SPECIALI DEGLI ATTUATORI, NON CONTEMPLETE NEL CATALOGO, VENGONO VALUTATE DAI NOSTRI TECNICI IN MODO TALE CHE LE VOSTRE ESIGENZE TROVINO SOLUZIONI TECNICO COMMERCIALI RAPIDE E SODDISFACENTI SOTTO OGNI PROFILO.

# ATTUATORI PNEUMATICI

## *Pneumatic Actuators*

**VALBIA** srl besides a large range of motorized valves and accessories, offers also a "SERVICE CENTRE" where special applications of actuators, not included in the catalogue, are valued by our technical staff, in order to find technical and commercial solutions, able to meet all your requirements.

## Art. 8P0001 - 8P0002

(Art. 700019 - 700025)



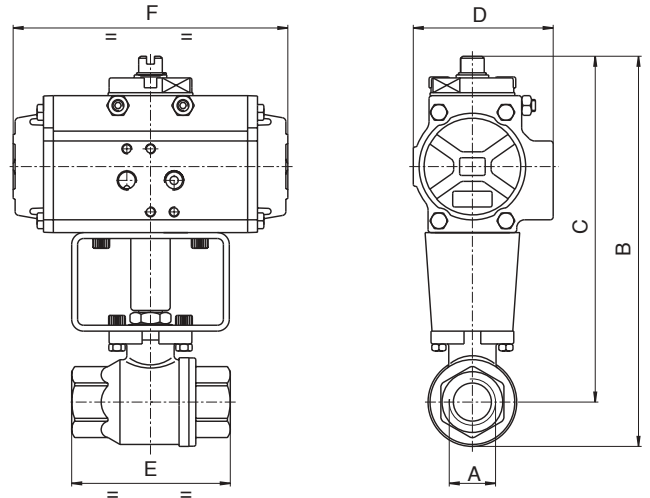
Valvola Valpres Art. 700000

VALVOLA CON ATTUATORE DOPPIO EFFETTO  
VALVE WITH DOUBLE ACTING ACTUATOR

Art. 8P0001

DN	8	10	15	20	25	32	40	50	65	80	100
PN	140	140	140	105	105	64	64	64	25	25	25
A	1/4"	3/8"	1/2"	3/4"	1"	1" 1/4	1" 1/2	2"	2" 1/2	3"	4"
B	121	121	127	198	207	217	256	287	325	347	413
C	106	106	109	176	180	185	216	239	264	275	324
D	45	45	45	71	71	71	81	95	106	106	123
E	56	56	66	79	93	100	110	131	159	185	222
F	110	110	110	140	140	140	162	207	238	238	272
ACT.	32	32	32	52	52	52	63	75	85	85	100

Valvola a sfera 2 vie, acciaio inox AISI 316, filettata F/F, con attuatore.  
2 way ball valve, stainless steel AISI 316, threaded F/F, with actuator.



VALVOLA CON ATTUATORE SEMPLICE EFFETTO  
VALVE WITH SPRING RETURN ACTUATOR

Art. 8P0002

DN	8	10	15	20	25	32	40	50	65	80	100
PN	140	140	140	105	105	64	64	64	25	25	25
A	1/4"	3/8"	1/2"	3/4"	1"	1" 1/4	1" 1/2	2"	2" 1/2	3"	4"
B	145	145	151	209	218	228	284	311	388	422	455
C	130	130	133	187	191	196	244	264	327	350	366
D	71	71	71	81	81	81	106	123	137	148	148
E	56	56	66	79	93	100	110	131	159	185	222
F	140	140	140	162	162	162	238	272	328	366	366
ACT.	52	52	52	63	63	63	85	100	115	125	125

## Art. 8P0003 - 8P0004

(Art. 700082 - 700083)

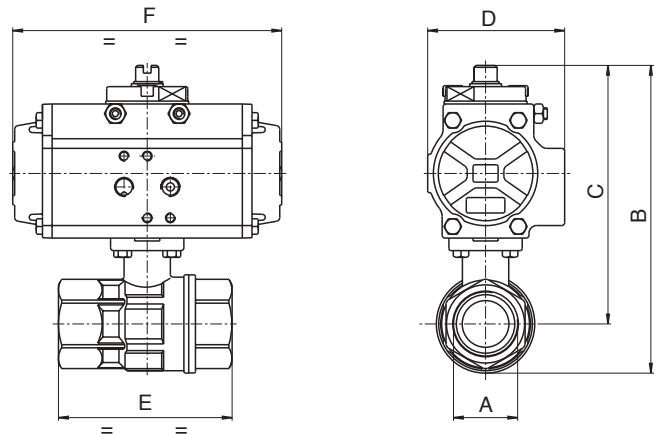


Valvola Valpres Art. 703000

VALVOLA CON ATTUATORE DOPPIO EFFETTO  
VALVE WITH DOUBLE ACTING ACTUATOR Art. 8P0003

DN	15	20	25	32	40	50
PN	64	64	64	64	64	64
A	1/2"	3/4"	1"	1" 1/4	1" 1/2	2"
B	115	121	136	146	191	211
C	98	100	110	113	153	162
D	45	45	45	45	71	71
E	67	78	90	100	112	135
F	110	110	110	110	140	140
ACT.	32	32	32	32	52	52

Valvola a sfera 2 vie in acciaio inox AISI 316, filettata F/F, con attuatore.  
2 way ball valve in stainless steel AISI 316, threaded F/F, with actuator.



VALVOLA CON ATTUATORE SEMPLICE EFFETTO  
VALVE WITH SPRING RETURN ACTUATOR Art. 8P0004

DN	15	20	25	32	40	50
PN	64	64	64	64	64	64
A	1/2"	3/4"	1"	1" 1/4	1" 1/2	2"
B	140	145	160	170	202	222
C	122	124	134	138	164	173
D	71	71	71	71	81	81
E	67	78	90	100	112	135
F	140	140	140	140	162	162
ACT.	52	52	52	52	63	63



# Art. 8P0005 - 8P0006

(Art. 700026- 700027)



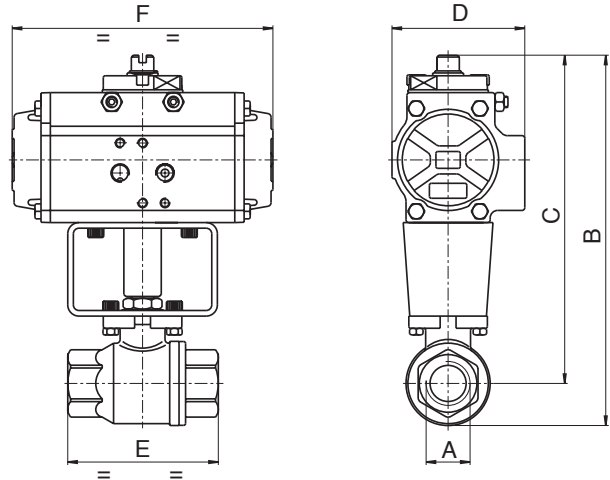
Valvola Valpres Art. 700060

VALVOLA CON ATTUATORE DOPPIO EFFETTO  
VALVE WITH DOUBLE ACTING ACTUATOR

Art. 8P0005

DN	8	10	15	20	25	32	40	50	65	80	100
PN	140	140	140	105	105	64	64	64	25	25	25
A	1/4"	3/8"	1/2"	3/4"	1"	1" 1/4	1" 1/2	2"	2" 1/2	3"	4"
B	121	121	127	198	207	217	256	287	325	347	413
C	106	106	109	176	180	185	216	239	264	275	324
D	45	45	45	71	71	71	81	95	106	106	123
E	56	56	66	79	93	100	110	131	159	185	222
F	110	110	110	140	140	140	162	207	238	238	272
ACT.	32	32	32	52	52	52	63	75	85	85	100

Valvola a sfera 2 vie lucida, in acciaio inox AISI 316, filettata F/F, con attuatore.  
2 way ball valve polished, stainless steel AISI 316, threaded F/F, with actuator.



VALVOLA CON ATTUATORE SEMPLICE EFFETTO  
VALVE WITH SPRING RETURN ACTUATOR

Art. 8P0006

DN	8	10	15	20	25	32	40	50	65	80	100
PN	140	140	140	105	105	64	64	64	25	25	25
A	1/4"	3/8"	1/2"	3/4"	1"	1" 1/4	1" 1/2	2"	2" 1/2	3"	4"
B	145	145	151	209	218	228	284	311	388	422	455
C	130	130	133	187	191	196	244	264	327	350	366
D	71	71	71	81	81	81	106	123	137	148	148
E	56	56	66	79	93	100	110	131	159	185	222
F	140	140	140	162	162	162	238	272	328	366	366
ACT.	52	52	52	63	63	63	85	100	115	125	125

# Art. 8P0007 F/F - 8P0013 F/F

(Art. 710055 F/F - 710054 F/F)

# Art. 8P0008 SW - 8P0014 SW

(Art. 710056 SW - 710098 SW)

# Art. 8P0009 BW - 8P0015 BW

(Art. 710088 BW - 710096 BW)



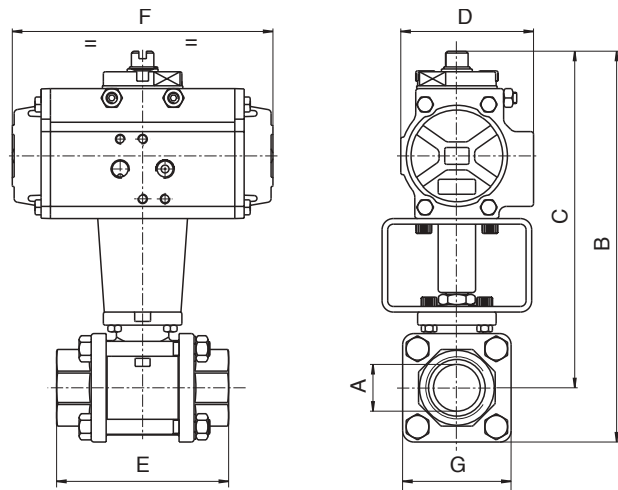
Valvola Valpres Art. 710000 F/F - 711000 SW - 712000 BW

VALVOLA CON ATTUATORE DOPPIO EFFETTO  
VALVE WITH DOUBLE ACTING ACTUATOR

Art. 8P0007 F/F  
Art. 8P0008 SW  
Art. 8P0009 BW

DN	8	10	15	20	25	32	40	50	65	80	100
PN	64	64	64	40	40	25	25	25	16	16	16
A	1/4"	3/8"	1/2"	3/4"	1"	1" 1/4	1" 1/2	2"	2" 1/2	3"	4"
B	128	128	138	200	209	218	254	284	331	355	419
C	111	111	119	176	180	185	216	239	264	275	324
D	45	45	45	71	71	71	81	95	106	106	123
E	57	57	65	76	92	107	116	136	154	180	217
F	110	110	110	140	140	140	162	207	238	238	272
G	33	33	38	47	58	67	76	90	134	161	190
ACT.	32	32	32	52	52	52	63	75	85	85	100

Valvola a sfera 2 vie in tre pezzi, acciaio inox AISI 316, con attuatore.  
2 way, three piece ball valve, stainless steel AISI 316, with actuator.



VALVOLA CON ATTUATORE SEMPLICE EFFETTO  
VALVE WITH SPRING RETURN ACTUATOR

Art. 8P0013 F/F  
Art. 8P0014 SW  
Art. 8P0015 BW

DN	8	10	15	20	25	32	40	50	65	80	100
PN	64	64	64	40	40	25	25	25	16	16	16
A	1/4"	3/8"	1/2"	3/4"	1"	1" 1/4	1" 1/2	2"	2" 1/2	3"	4"
B	152	152	163	211	220	229	282	309	394	430	461
C	136	136	144	187	191	196	244	264	327	350	366
D	71	71	71	81	81	81	106	123	137	148	148
E	57	57	65	76	92	107	116	136	154	180	217
F	140	140	140	162	162	162	238	272	328	366	366
G	33	33	38	47	58	67	76	90	134	161	190
ACT.	52	52	52	63	63	63	85	100	115	125	125

**Art. 8P0010 F/F vap - 8P0016 F/F vap**

(Art. 710090 F/F vap - 710100 F/F vap)

**Art. 8P0011 SW vap - 8P0017 SW vap**

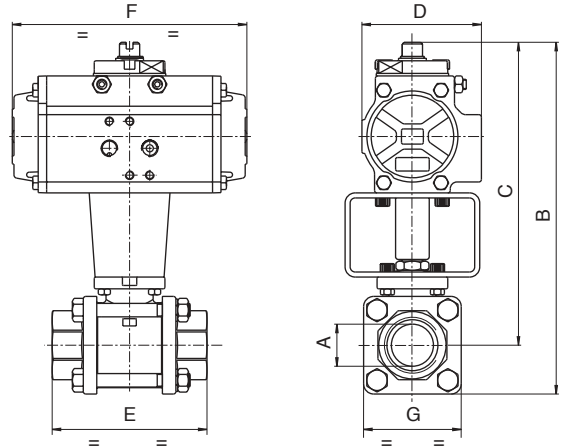
(Art. 710094 SW vap - 710104 SW vap)

**Art. 8P0012 BW vap - 8P0018 BW vap**

(Art. 710092 BW vap - 710102 BW vap)



Valvola a sfera 2 vie in tre pezzi, per VAPORE, acciaio inox AISI 316, con attuatore.  
2 way, three piece ball valve, for STEAM, stainless steel AISI 316, with actuator.



Valvola Valpres Art. 710060 F/F vap PN15 - 710061 SW vap PN15 - 710062 BW vap PN15  
VALVOLA CON ATTUATORE DOPPIO EFFETTO  
VALVE WITH DOUBLE ACTING ACTUATOR

Art. 8P0010 F/F vap  
Art. 8P0011 SW vap  
Art. 8P0012 BW vap

DN	SOLO F/F Only F/F										
	8	10	15	20	25	32	40	50	65	80	100
PN	15	15	15	15	15	15	15	15	15	15	15
A	1/4"	3/8"	1/2"	3/4"	1"	1 1/4"	1 1/2"	2"	2 1/2"	3"	4"
B	128	128	138	200	209	218	254	284	331	355	419
C	111	111	119	176	180	185	216	239	264	275	324
D	45	45	45	71	71	71	81	95	106	106	123
E	57	57	65	76	92	107	116	136	154	180	217
F	110	110	110	140	140	140	162	207	238	238	272
G	33	33	38	47	58	67	76	90	134	161	190
ACT.	32	32	32	52	52	52	63	75	85	85	100

VALVOLA CON ATTUATORE SEMPLICE EFFETTO  
VALVE WITH SPRING RETURN ACTUATOR

Art. 8P0016 F/F vap  
Art. 8P0017 SW vap  
Art. 8P0018 BW vap

DN	SOLO F/F Only F/F										
	8	10	15	20	25	32	40	50	65	80	100
PN	15	15	15	15	15	15	15	15	15	15	15
A	1/4"	3/8"	1/2"	3/4"	1"	1 1/4"	1 1/2"	2"	2 1/2"	3"	4"
B	152	152	163	211	220	229	282	309	394	430	461
C	136	136	144	187	191	196	244	264	327	350	366
D	71	71	71	81	81	81	106	123	137	148	148
E	57	57	65	76	92	107	116	136	154	180	217
F	140	140	140	162	162	162	238	272	328	366	366
G	33	33	38	47	58	67	76	90	134	161	190
ACT.	52	52	52	63	63	63	85	100	115	125	125

**Art. 8P0019 F/F - 8P0025 F/F**

(Art. 710057 F/F - 710047 F/F)

**Art. 8P0020 SW - 8P0026 SW**

(Art. 710089 SW - 710099 SW)

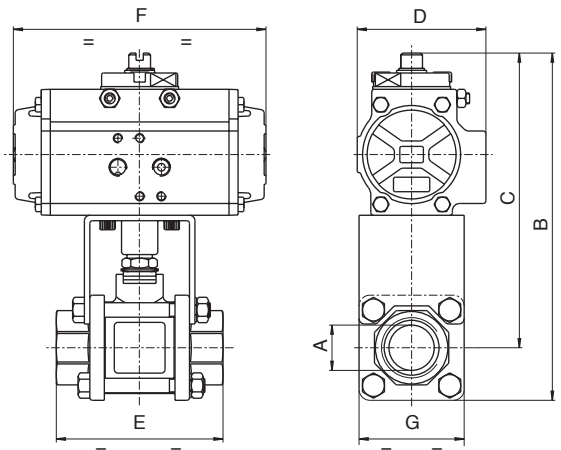
**Art. 8P0021 BW - 8P0027 BW**

(Art. 710086 BW - 710097 BW)



Valvola a sfera 2 vie in tre pezzi, acciaio al carbonio ASTM A105, con sfera e asta inox AISI 304, con attuatore.

2 way, three piece ball valve, carbon steel ASTM A105, with ball and stem in stainless steel AISI 304, with actuator.



Valvola Valpres Art. 713000 F/F - 714000 SW - 715000 BW  
VALVOLA CON ATTUATORE DOPPIO EFFETTO  
VALVE WITH DOUBLE ACTING ACTUATOR

Art. 8P0019 F/F  
Art. 8P0020 SW  
Art. 8P0021 BW

DN	SOLO F/F Only F/F										
	8	10	15	20	25	32	40	50	65	80	100
PN	64	64	64	40	40	25	25	25	16	16	16
A	1/4"	3/8"	1/2"	3/4"	1"	1 1/4"	1 1/2"	2"	2 1/2"	3"	4"
B	148	148	148	179	192	203	233	284	331	355	419
C	129	129	129	156	163	169	195	239	264	275	324
D	45	45	45	71	71	71	81	95	106	106	123
E	65	65	65	76	92	107	116	136	154	180	217
F	110	110	110	140	140	140	162	207	238	238	272
G	38	38	38	47	58	67	76	90	134	161	190
ACT.	32	32	32	52	52	52	63	75	85	85	100

VALVOLA CON ATTUATORE SEMPLICE EFFETTO  
VALVE WITH SPRING RETURN ACTUATOR

Art. 8P0025 F/F  
Art. 8P0026 SW  
Art. 8P0027 BW

DN	SOLO F/F Only F/F										
	8	10	15	20	25	32	40	50	65	80	100
PN	64	64	64	40	40	25	25	25	16	16	16
A	1/4"	3/8"	1/2"	3/4"	1"	1 1/4"	1 1/2"	2"	2 1/2"	3"	4"
B	172	172	172	190	203	214	261	309	394	430	461
C	153	153	153	167	174	180	223	264	327	350	366
D	71	71	71	81	81	81	106	123	137	148	148
E	65	65	65	76	92	107	116	136	154	180	217
F	140	140	140	162	162	162	238	272	328	366	366
G	38	38	38	47	58	67	76	90	134	161	190
ACT.	52	52	52	63	63	63	85	100	115	125	125



**Art. 8P0022 F/F vap - 8P0028 F/F vap**

(Art. 710091 F/F vap - 710101 F/F vap)

**Art. 8P0023 SW vap - 8P0029 SW vap**

(Art. 710095 SW vap - 710105 SW vap)

**Art. 8P0024 BW vap - 8P0030 BW vap**

(Art. 710093 BW vap - 710103 BW vap)



Valvola Valpres Art. 710063 F/F vap PN15 - 710064 SW vap PN15 - 710065 BW vap PN15

VALVOLA CON ATTUATORE DOPPIO EFFETTO  
VALVE WITH DOUBLE ACTING ACTUATOR

Art. 8P0022 F/F vap  
Art. 8P0023 SW vap  
Art. 8P0024 BW vap

DN	SOLO FF Only F/F										
	8	10	15	20	25	32	40	50	65	80	100
PN	15	15	15	15	15	15	15	15	15	15	15
A	1/4"	3/8"	1/2"	3/4"	1"	1" 1/4	1" 1/2	2"	2" 1/2	3"	4"
B	148	148	148	179	192	203	233	284	331	355	419
C	129	129	129	156	163	169	195	239	264	275	324
D	45	45	45	71	71	71	81	95	106	106	123
E	65	65	65	76	92	107	116	136	154	180	217
F	110	110	110	140	140	140	162	207	238	238	272
G	38	38	38	47	58	67	76	90	134	161	190
ACT.	32	32	32	52	52	52	63	75	85	85	100

**Art. 8P0031 AISI 304 - 8P0033 AISI 304**

(Art. 720035 - 720071)

**Art. 8P0032 AISI 316 - 8P0034 AISI 316**

(Art. 720044 - 720059)



Valvola Valpres Art. 720000 AISI 304 - Art. 721000 AISI 316

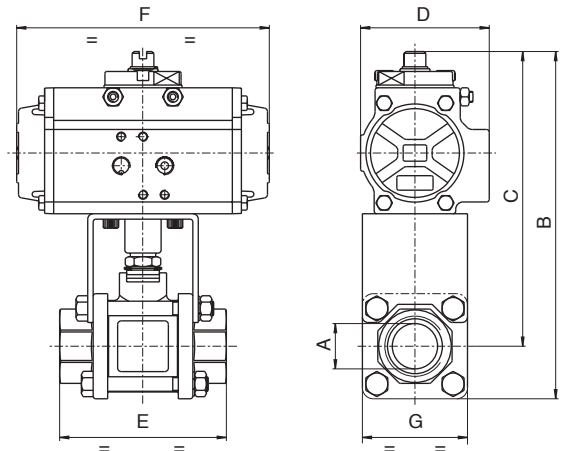
VALVOLA CON ATTUATORE DOPPIO EFFETTO  
VALVE WITH DOUBLE ACTING ACTUATOR

Art. 8P0031 AISI 304  
Art. 8P0032 AISI 316

DN	SOLO FF Only F/F											
	15	20	25	32	40	50	65	80	100	125	150	200
PN	16	16	16	16	16	16	16	16	16	16	16	16
A	147	176	181	188	214	239	265	275	324	377	414	492
B	192	226	236	253	289	322	358	375	434	502	556	662
C	90	100	110	130	150	165	185	200	220	250	285	340
D	45	71	71	71	81	95	106	106	123	137	148	187
E	35	40	46	54	64	82	103	122	152	196	232	317
F	110	140	140	140	162	207	238	238	272	328	366	522
ACT.	32	52	52	52	63	75	85	85	100	115	125	160

Valvola a sfera 2 vie in tre pezzi, per VAPORE, acciaio al carbonio ASTM A105, con sfera e asta inox AISI 304, con attuatore.

2 way, three piece ball valve, for STEAM, carbon steel ASTM A105, with ball and stem in stainless steel AISI 304, with actuator.



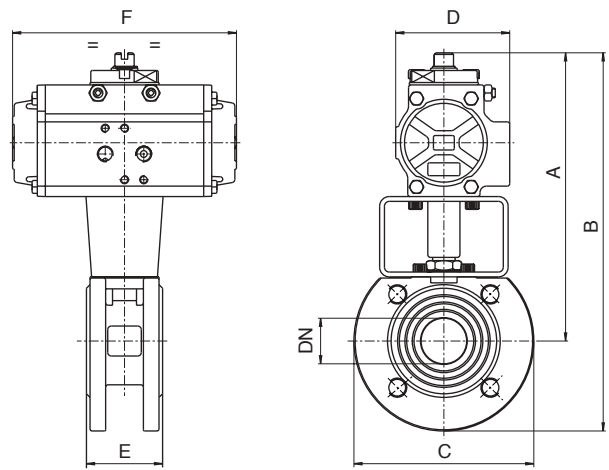
VALVOLA CON ATTUATORE SEMPLICE EFFETTO  
VALVE WITH SPRING RETURN ACTUATOR

Art. 8P0028 F/F vap  
Art. 8P0029 SW vap  
Art. 8P0030 BW vap

DN	SOLO FF Only F/F										
	8	10	15	20	25	32	40	50	65	80	100
PN	15	15	15	15	15	15	15	15	15	15	15
A	1/4"	3/8"	1/2"	3/4"	1"	1" 1/4	1" 1/2	2"	2" 1/2	3"	4"
B	172	172	172	190	203	214	261	309	394	430	461
C	153	153	153	167	174	180	223	264	327	350	366
D	71	71	71	81	81	81	106	123	137	148	148
E	65	65	65	76	92	107	116	136	154	180	217
F	140	140	140	162	162	162	238	272	328	366	366
G	38	38	38	47	58	67	76	90	134	161	190
ACT.	52	52	52	63	63	63	85	100	115	125	125

Valvola a sfera 2 vie, flangiata tipo "WAFER", acciaio inox AISI 304 e AISI 316, con attuatore.

2 way "WAFER" ball valve, flanged, stainless steel AISI 304 and AISI 316, with actuator.



VALVOLA CON ATTUATORE SEMPLICE EFFETTO  
VALVE WITH SPRING RETURN ACTUATOR

Art. 8P0033 AISI 304  
Art. 8P0034 AISI 316

DN	SOLO FF Only F/F											
	15	20	25	32	40	50	65	80	100	125	150	200
PN	16	16	16	16	16	16	16	16	16	16	16	16
A	171	187	192	199	242	264	328	350	366	423	499	543
B	216	237	247	264	317	346	421	450	476	548	642	713
C	90	100	110	130	150	165	185	200	220	250	285	340
D	71	81	81	81	106	123	137	148	148	187	218	218
E	35	40	46	54	64	82	103	122	152	196	232	317
F	140	162	162	162	238	272	328	366	366	522	575	575
ACT.	52	63	63	63	85	100	115	125	125	160	200	200

## Art. 8P0035 - 8P0037

(Art. 720032 - 720040)



Valvola Valpres Art. 720000

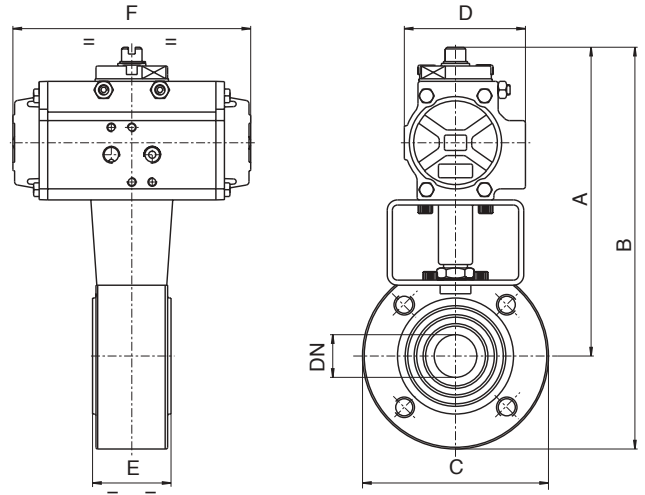
VALVOLA CON ATTUATORE DOPPIO EFFETTO  
VALVE WITH DOUBLE ACTING ACTUATOR

Art. 8P0035

DN	15	20	25	32	40	50	65	80	100	125	150	200
PN	16	16	16	16	16	16	16	16	16	16	16	16
A	147	176	181	188	214	239	265	276	324	377	414	492
B	192	226	236	253	284	314	353	371	434	502	564	662
C	90	100	110	130	140	150	175	190	220	250	300	340
D	45	71	71	71	81	95	106	106	123	137	148	187
E	35	40	46	54	64	82	103	122	152	196	232	317
F	110	140	140	140	162	207	238	238	272	328	366	522
ACT.	32	52	52	52	63	75	85	85	100	115	125	160

Valvola a sfera 2 vie, flangiata tipo "WAFER", acciaio al carbonio ASTM A105, con sfera e asta inox AISI 304, con attuatore.

2 way "WAFER" ball valve, flanged, carbon steel ASTM A105, with ball and stem in stainless steel AISI 304, with actuator.



VALVOLA CON ATTUATORE SEMPLICE EFFETTO  
VALVE WITH SPRING RETURN ACTUATOR

Art. 8P0037

DN	15	20	25	32	40	50	65	80	100	125	150	200
PN	16	16	16	16	16	16	16	16	16	16	16	16
A	171	187	192	199	242	264	328	351	366	423	499	543
B	216	237	247	264	312	339	416	445	476	548	649	713
C	90	100	110	130	140	150	175	190	220	250	300	340
D	71	81	81	81	106	123	137	148	148	187	218	218
E	35	40	46	54	64	82	103	122	152	196	232	317
F	140	162	162	162	238	272	328	366	366	522	575	575
ACT.	52	63	63	63	85	100	115	125	125	160	200	200

## Art. 8P0036 - 8P0038

(Art. 720120 - 720121)



Valvola Valpres Art. 720001

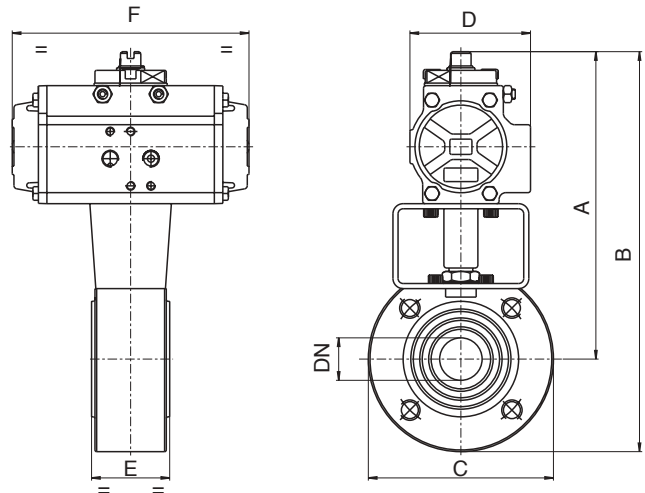
VALVOLA CON ATTUATORE DOPPIO EFFETTO  
VALVE WITH DOUBLE ACTING ACTUATOR

Art. 8P0036

DN	15	20	25	32	40	50	65	80	100	125	150	200
PN	16	16	16	16	16	16	16	16	16	16	16	16
A	147	176	181	188	214	239	265	276	324	377	414	492
B	192	226	236	253	284	314	353	371	434	502	564	662
C	90	100	110	130	140	150	175	190	220	250	300	340
D	45	71	71	71	81	95	106	106	123	137	148	187
E	35	40	46	54	64	82	103	122	152	196	232	317
F	110	140	140	140	162	207	238	238	272	328	366	522
ACT.	32	52	52	52	63	75	85	85	100	115	125	160

Valvola a sfera 2 vie, flangiata tipo "WAFER", acciaio al carbonio ASTM A105, con sfera in ottone cromato e asta inox AISI 304, con attuatore.

2 way "WAFER" ball valve, flanged, carbon steel ASTM A105, with chrome plated ball and stem in stainless steel AISI 304, with actuator.



VALVOLA CON ATTUATORE SEMPLICE EFFETTO  
VALVE WITH SPRING RETURN ACTUATOR

Art. 8P0038

DN	15	20	25	32	40	50	65	80	100	125	150	200
PN	16	16	16	16	16	16	16	16	16	16	16	16
A	171	187	192	199	242	264	328	351	366	423	499	543
B	216	237	247	264	312	339	416	446	476	548	649	713
C	90	100	110	130	140	150	175	190	220	250	300	340
D	71	81	81	81	106	123	137	148	148	187	218	218
E	35	40	46	54	64	82	103	122	152	196	232	317
F	140	162	162	162	238	272	328	366	366	522	575	575
ACT.	52	63	63	63	85	100	115	125	125	160	200	200



## Art. 8P0039 - 8P0040

(Art. 720282 - 720283)



Valvola Valpres Art. 720212

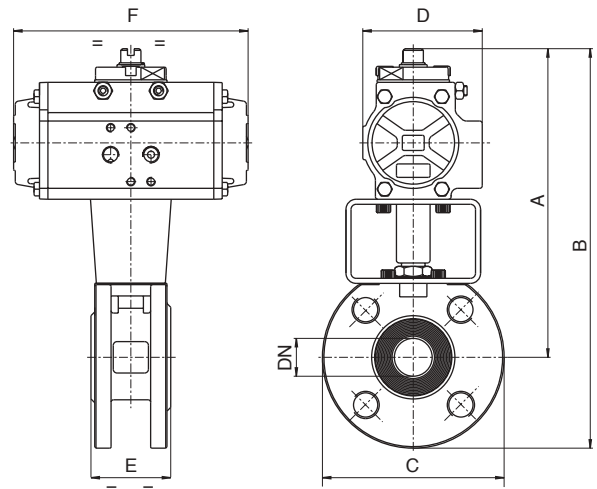
VALVOLA CON ATTUATORE DOPPIO EFFETTO  
VALVE WITH DOUBLE ACTING ACTUATOR

Art. 8P0039

DN	15	20	25	32	40	50	65	80	100	150
PN	50	50	50	50	50	50	50	50	50	50
A	175	193	199	199	228	260	308	316	365	448
B	223	253	259	264	303	342	403	421	492	608
C	95	120	120	130	150	165	190	210	254	320
D	71	81	81	81	95	106	123	123	137	187
E	35	40	46	54	64	82	103	122	152	232
F	140	162	162	162	207	238	272	272	328	522
ACT.	52	63	63	63	75	85	100	100	115	160

Valvola a sfera 2 vie flangiata tipo "WAFER" ANSI 300, acciaio inox AISI 316-CF8M, con attuatore.

2 way "WAFER" ball valve, flanged ANSI 300, stainless steel AISI 316-CF8M, with actuator.



VALVOLA CON ATTUATORE SEMPLICE EFFETTO  
VALVE WITH SPRING RETURN ACTUATOR

Art. 8P0040

DN	15	20	25	32	40	50	65	80	100	150
PN	50	50	50	50	50	50	50	50	50	50
A	186	221	227	227	253	303	350	358	412	591
B	234	281	287	292	328	385	445	463	539	751
C	95	120	120	130	150	165	190	210	254	320
D	81	106	106	106	123	137	148	148	187	290
E	35	40	46	54	64	82	103	122	152	232
F	162	238	238	238	272	328	366	366	522	672
ACT.	63	85	85	85	100	115	125	125	160	270

## Art. 8P0041 - 8P0042

(Art. 720284 - 720285)



Valvola Valpres Art. 720232

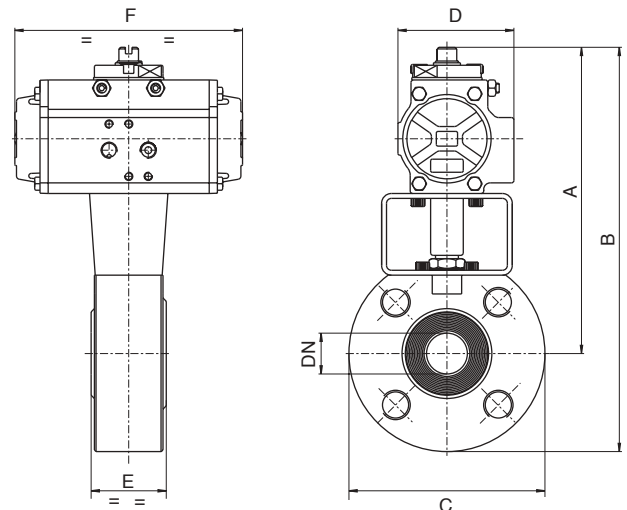
VALVOLA CON ATTUATORE DOPPIO EFFETTO  
VALVE WITH DOUBLE ACTING ACTUATOR

Art. 8P0041

DN	15	20	25	32	40	50	65	80	100	150
PN	50	50	50	50	50	50	50	50	50	50
A	175	193	199	199	234	260	308	316	365	448
B	223	253	259	264	309	342	403	421	490	608
C	95	120	120	130	150	165	190	210	250	320
D	71	81	81	81	95	106	123	123	137	187
E	35	40	46	54	64	82	103	122	152	232
F	140	162	162	162	207	238	272	272	328	522
ACT.	52	63	63	63	75	85	100	100	115	160

Valvola a sfera 2 vie flangiata tipo "WAFER" ANSI 300, acciaio al carbonio ASTM A105, con sfera e asta in acciaio inox AISI 304, con attuatore.

2 way "WAFER" ball valve, flanged ANSI 300, in carbon steel ASTM A105 with ball and stem in stainless steel AISI 304, with actuator.

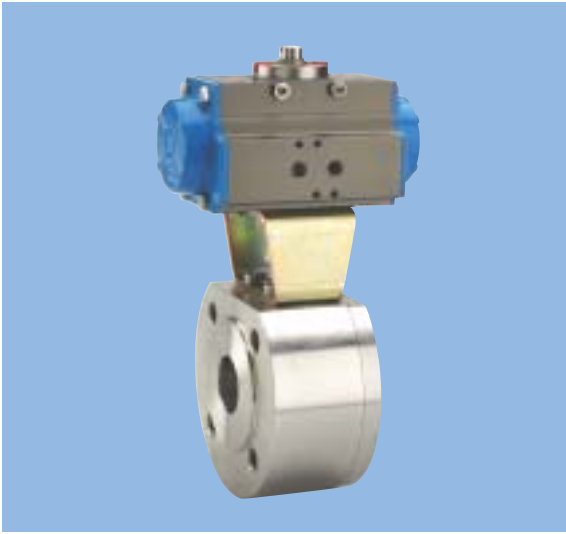


VALVOLA CON ATTUATORE SEMPLICE EFFETTO  
VALVE WITH SPRING RETURN ACTUATOR

Art. 8P0042

DN	15	20	25	32	40	50	65	80	100	150
PN	50	50	50	50	50	50	50	50	50	50
A	186	221	227	227	259	303	350	358	412	631
B	234	281	287	292	334	385	445	463	537	791
C	95	120	120	130	150	165	190	210	250	320
D	81	106	106	106	123	137	148	148	187	290
E	35	40	46	54	64	82	103	122	152	232
F	162	238	238	238	272	328	366	366	522	672
ACT.	63	85	85	85	100	115	125	125	160	270

## Art. 8P0125 - 8P0126



Valvola Valpres Art. 723000

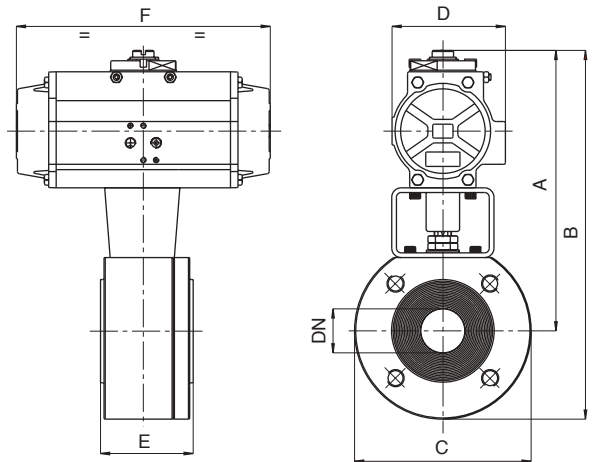
VALVOLA CON ATTUATORE DOPPIO EFFETTO  
VALVE WITH DOUBLE ACTING ACTUATOR

Art. 8P0125

DN	15	20	25	32	40	50	65	80	100
	PN 40	40	40	40	40	40	16	16	16
A	148	174	185	189	224	252	271	279	324
B	195	227	243	259	299	334	364	379	434
C	95	105	115	140	150	165	185	200	220
D	45	71	71	71	81	95	106	106	123
E	53	53	57	65	79	85	103	122	155
F	110	140	140	140	162	207	238	238	272
ACT.	32	52	52	52	63	75	85	85	100

Valvola a sfera "WAFER SPLIT", flangiata, in acciaio inox AISI 316, passaggio totale, Fire Safe, Antistatic Device, con attuatore.

"WAFER SPLIT" full bore flanged ball valve, stainless steel AISI 316, Fire Safe, Antistatic Device, with actuator.



VALVOLA CON ATTUATORE SEMPLICE EFFETTO  
VALVE WITH SPRING RETURN ACTUATOR

Art. 8P0126

DN	15	20	25	32	40	50	65	80	100
	PN 40	40	40	40	40	40	16	16	16
A	172	185	196	200	252	276	314	334	366
B	220	238	254	270	327	359	407	434	376
C	95	105	115	140	150	165	185	200	220
D	71	81	81	81	106	123	137	148	148
E	53	53	57	65	79	85	103	122	155
F	140	162	162	162	238	272	328	366	366
ACT.	52	63	63	63	85	100	115	125	125

## Art. 8P0127- 8P0128



Valvola Valpres Art. 724000

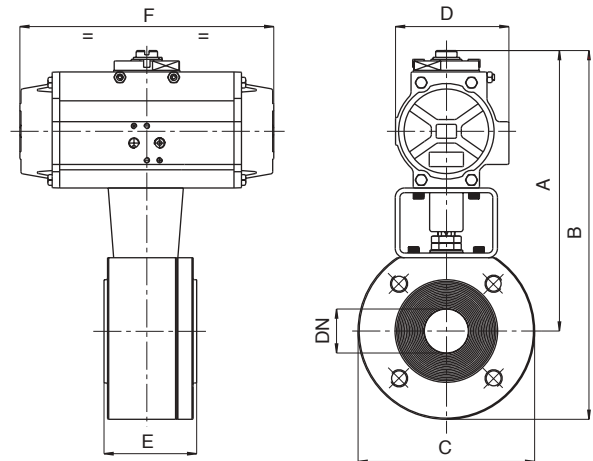
VALVOLA CON ATTUATORE DOPPIO EFFETTO  
VALVE WITH DOUBLE ACTING ACTUATOR

Art. 8P0127

DN	15	20	25	32	40	50	65	80	100
	PN 40	40	40	40	40	40	16	16	16
A	148	174	185	189	224	252	271	279	324
B	195	227	243	259	299	334	364	379	434
C	95	105	115	140	150	165	185	200	220
D	45	71	71	71	81	95	106	106	123
E	53	53	57	65	79	85	103	122	155
F	110	140	140	140	162	207	238	238	272
ACT.	32	52	52	52	63	75	85	85	100

Valvola a sfera "WAFER SPLIT", flangiata, in acciaio al carbonio A105, passaggio totale, Fire Safe, Antistatic Device, con attuatore.

"WAFER SPLIT" full bore flanged ball valve, carbon steel A105, Fire Safe, Antistatic Device, with actuator.



VALVOLA CON ATTUATORE SEMPLICE EFFETTO  
VALVE WITH SPRING RETURN ACTUATOR

Art. 8P0128

DN	15	20	25	32	40	50	65	80	100
	PN 40	40	40	40	40	40	16	16	16
A	172	185	196	200	252	276	314	334	366
B	220	238	254	270	327	359	407	434	376
C	95	105	115	140	150	165	185	200	220
D	71	81	81	81	106	123	137	148	148
E	53	53	57	65	79	85	103	122	155
F	140	162	162	162	238	272	328	366	366
ACT.	52	63	63	63	85	100	115	125	125





## Art. 8P0117 - 8P0118

(Art. 760008 - 760010)



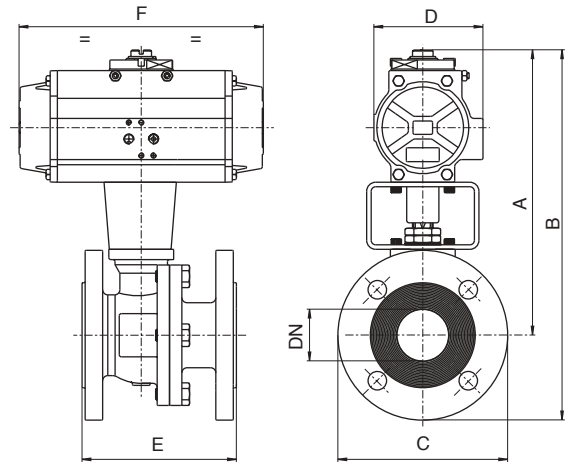
Valvola Valpres Art. 760000

VALVOLA CON ATTUATORE DOPPIO EFFETTO  
VALVE WITH DOUBLE ACTING ACTUATOR

Art. 8P0117

DN	15	20	25	32	40	50	65	80	100	150	200
PN	40	40	40	40	40	40	16	16	16	16	16
A	148	174	195	198	237	261	282	318	344	441	519
B	195	227	253	268	312	343	375	418	454	583	689
C	95	105	115	140	150	165	185	200	220	285	340
D	45	71	71	71	81	95	106	106	123	148	187
E	115	120	125	130	140	150	170	180	190	350	400
F	110	140	140	140	162	207	238	238	272	366	522
ACT.	32	52	52	52	63	75	85	85	100	125	160

Valvola a sfera "SPLIT BODY", flangiata DIN 3202 F4/F5, in acciaio inox AISI 316-1.4408, passaggio totale, Fire Safe, Antistatic Device, con attuatore.  
"SPLIT BODY" full bore flanged ball valve, DIN 3202 F4/F5, stainless steel AISI 316-1.4408, Fire Safe, Antistatic Device, with actuator.



VALVOLA CON ATTUATORE SEMPLICE EFFETTO  
VALVE WITH SPRING RETURN ACTUATOR

Art. 8P0118

DN	15	20	25	32	40	50	65	80	100	150	200
PN	40	40	40	40	40	40	16	16	16	16	16
A	172	185	206	209	265	285	325	373	386	526	570
B	220	238	264	279	340	368	418	473	496	669	740
C	95	105	115	140	150	165	185	200	220	285	340
D	71	81	81	81	106	123	137	148	148	218	218
E	115	120	125	130	140	150	170	180	190	350	400
F	140	162	162	162	238	272	328	366	366	575	575
ACT.	52	63	63	63	85	100	115	125	125	200	200

## Art. 8P0119 - 8P0120

(Art. 760009 - 760011)



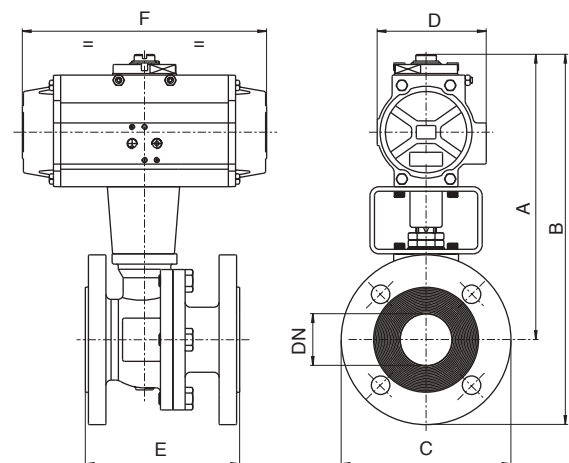
Valvola Valpres Art. 760001

VALVOLA CON ATTUATORE DOPPIO EFFETTO  
VALVE WITH DOUBLE ACTING ACTUATOR

Art. 8P0119

DN	15	20	25	32	40	50	65	80	100	150	200
PN	40	40	40	40	40	40	16	16	16	16	16
A	148	174	195	198	237	261	282	318	344	441	519
B	195	227	253	268	312	343	375	418	454	583	689
C	95	105	115	140	150	165	185	200	220	285	340
D	45	71	71	71	81	95	106	106	123	148	187
E	115	120	125	130	140	150	170	180	190	350	400
F	110	140	140	140	162	207	238	238	272	366	522
ACT.	32	52	52	52	63	75	85	85	100	125	160

Valvola a sfera "SPLIT BODY", flangiata DIN 3202 F4/F5, in acciaio al carbonio A105-1.0619, passaggio totale, Fire Safe, Antistatic Device, con attuatore.  
"SPLIT BODY" full bore flanged ball valve, DIN 3202 F4/F5, carbon steel A105-1.0619, Fire Safe, Antistatic Device, with actuator

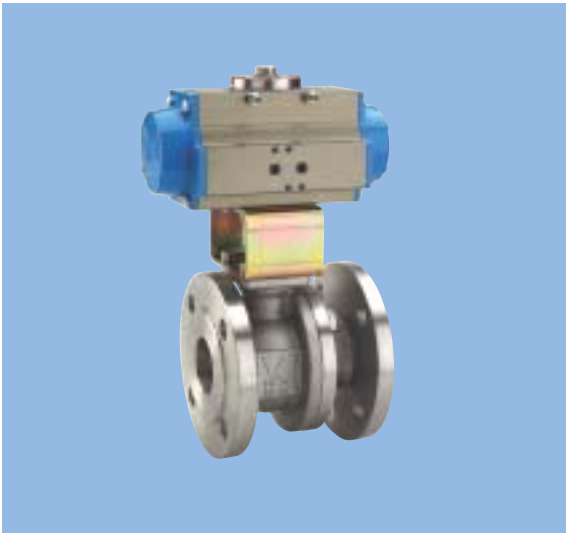


VALVOLA CON ATTUATORE SEMPLICE EFFETTO  
VALVE WITH SPRING RETURN ACTUATOR

Art. 8P0120

DN	15	20	25	32	40	50	65	80	100	150	200
PN	40	40	40	40	40	40	16	16	16	16	16
A	172	185	206	209	265	285	325	373	386	526	570
B	220	238	264	279	340	368	418	473	496	669	740
C	95	105	115	140	150	165	185	200	220	285	340
D	71	81	81	81	106	123	137	148	148	218	218
E	115	120	125	130	140	150	170	180	190	350	400
F	140	162	162	162	238	272	328	366	366	575	575
ACT.	52	63	63	63	85	100	115	125	125	200	200

## Art. 8P0121- 8P0122



Valvola Valpres Art. 760005

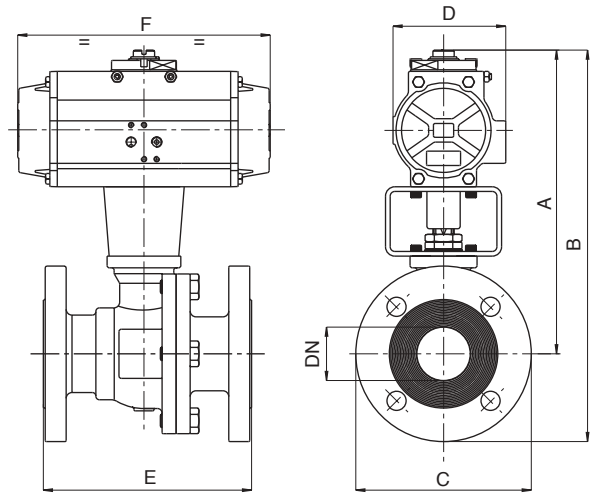
VALVOLA CON ATTUATORE DOPPIO EFFETTO  
VALVE WITH DOUBLE ACTING ACTUATOR

Art. 8P0121

DN	15	20	25	40	50	80	100	150	200
	PN 40	40	40	40	40	16	16	16	16
A	148	174	195	237	261	318	344	441	519
B	193	224	250	302	336	413	459	583	689
C	90	100	110	130	150	190	230	285	340
D	45	71	71	81	95	106	123	148	187
E	108	117	127	165	178	203	229	394	457
F	110	140	140	162	207	238	272	366	522
ACT.	32	52	52	63	75	85	100	125	160

Valvola a sfera "SPLIT BODY", flangiata ANSI 150, in acciaio inox AISI 316-CF8M, passaggio totale, Fire Safe, Antistatic Device, con attuatore.

"SPLIT BODY" full bore flanged ball valve, ANSI 150, stainless steel AISI 316-CF8M, Fire Safe, Antistatic Device, with actuator



VALVOLA CON ATTUATORE SEMPLICE EFFETTO  
VALVE WITH SPRING RETURN ACTUATOR

Art. 8P0122

DN	15	20	25	40	50	80	100	150	200
	PN 40	40	40	40	40	16	16	16	16
A	172	185	206	265	285	373	386	526	570
B	217	235	261	330	360	468	501	669	740
C	90	100	110	130	150	190	230	285	340
D	71	81	81	106	123	148	148	218	218
E	108	117	127	165	178	203	229	394	457
F	140	162	162	238	272	366	366	575	575
ACT.	52	63	63	85	100	125	125	200	200

## Art. 8P0123 - 8P0124



Valvola Valpres Art. 762000

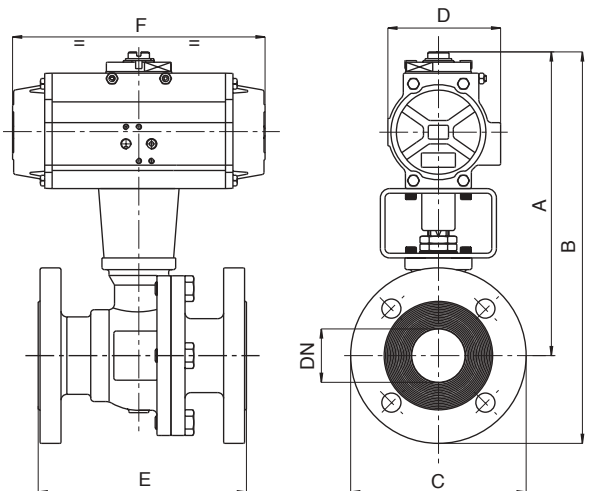
VALVOLA CON ATTUATORE DOPPIO EFFETTO  
VALVE WITH DOUBLE ACTING ACTUATOR

Art. 8P0123

DN	15	20	25	40	50	80	100	150	200
	PN 40	40	40	40	40	16	16	16	16
A	148	174	195	237	261	318	344	441	519
B	193	224	250	302	336	413	459	583	689
C	90	100	110	130	150	190	230	285	340
D	45	71	71	81	95	106	123	148	187
E	108	117	127	165	178	203	229	394	457
F	110	140	140	162	207	238	272	366	522
ACT.	32	52	52	63	75	85	100	125	160

Valvola a sfera "SPLIT BODY", flangiata ANSI 150, in acciaio al carbonio A216-WCB, passaggio totale, Fire Safe, Antistatic Device, con attuatore.

"SPLIT BODY" full bore flanged ball valve, ANSI 150, carbon steel A216-WCB, Fire Safe, Antistatic Device, with actuator



VALVOLA CON ATTUATORE SEMPLICE EFFETTO  
VALVE WITH SPRING RETURN ACTUATOR

Art. 8P0124

DN	15	20	25	40	50	80	100	150	200
	PN 40	40	40	40	40	16	16	16	16
A	172	185	206	265	285	373	386	526	570
B	217	235	261	330	360	468	501	669	740
C	90	100	110	130	150	190	230	285	340
D	71	81	81	106	123	148	148	218	218
E	108	117	127	165	178	203	229	394	457
F	140	162	162	238	272	366	366	575	575
ACT.	52	63	63	85	100	125	125	200	200



# Art. 8P0043 - 8P0044

(Art. 730023 - 730024)



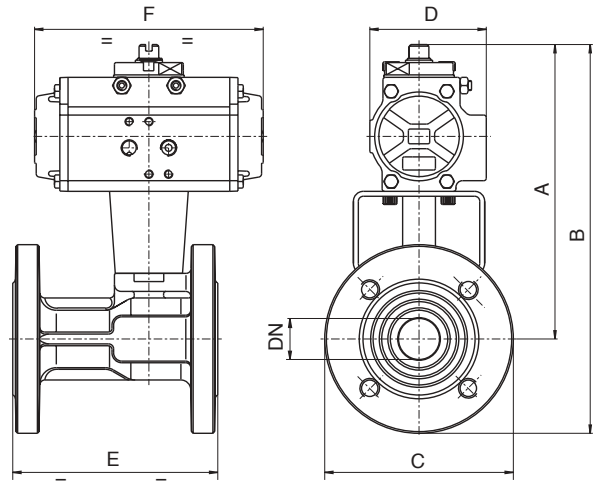
Valvola Valpres Art. 730007 da DN40 a DN65  
Valvola Valpres Art. 730003 da DN80 a DN200

VALVOLA CON ATTUATORE DOPPIO EFFETTO  
VALVE WITH DOUBLE ACTING ACTUATOR

Art. 8P0043

DN	40	50	65	80	100	125	150	200
PN	16	16	16	16	16	16	16	16
A	215	238	264	275	326	379	414	490
B	290	321	356	375	436	504	556	660
C	150	165	185	200	220	250	285	340
D	81	95	106	106	123	137	148	187
E	140	150	170	180	190	200	210	400
F	162	207	238	238	272	328	366	522
ACT.	63	75	85	85	100	115	125	160

Valvola a sfera 2 vie flangiata, in ghisa G250 con sfera e asta inox AISI 304 (scartamento secondo DIN 3202-F4, DN200 DIN 3202-F5), con attuatore.  
2 way flanged ball valve, cast iron G250 with ball and stem in stainless steel AISI 304 (gauge in compliance with DIN 3202-F4, DN200 DIN 3202-F5), with actuator.



VALVOLA CON ATTUATORE SEMPLICE EFFETTO  
VALVE WITH SPRING RETURN ACTUATOR

Art. 8P0044

DN	40	50	65	80	100	125	150	200
PN	16	16	16	16	16	16	16	16
A	243	263	327	350	368	425	499	541
B	318	345	419	450	478	550	642	711
C	150	165	185	200	220	250	285	340
D	106	123	137	148	148	187	218	218
E	140	150	170	180	190	200	210	400
F	238	272	328	366	366	522	575	575
ACT.	85	100	115	125	125	160	200	200

# Art. 8P0045 - 8P0046

(Art. 730012 - 730022)



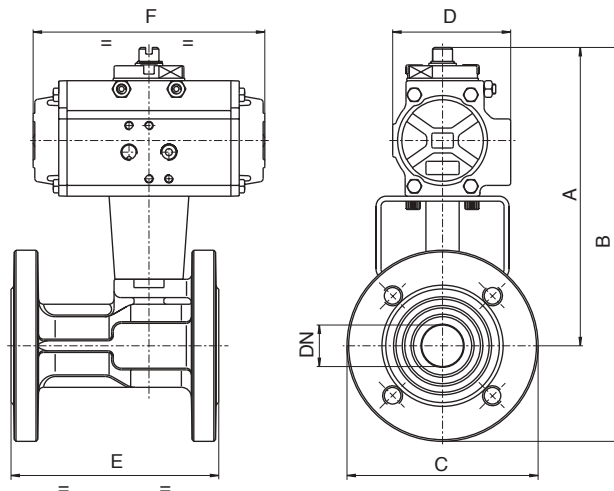
Valvola Valpres Art. 730008 da DN25 a DN65  
Valvola Valpres Art. 730000 da DN80 a DN200

VALVOLA CON ATTUATORE DOPPIO EFFETTO  
VALVE WITH DOUBLE ACTING ACTUATOR

Art. 8P0045

DN	25	32	40	50	65	80	100	125	150	200
PN	16	16	16	16	16	16	16	16	16	16
A	179	186	215	238	264	275	326	379	414	490
B	237	256	290	321	356	375	436	504	556	660
C	115	140	150	165	185	200	220	250	285	340
D	71	71	81	95	106	106	123	137	148	187
E	125	130	140	150	170	180	190	200	210	400
F	140	140	162	204	238	238	272	328	366	522
ACT.	52	52	63	75	85	85	100	115	125	160

Valvola a sfera 2 vie flangiata, in ghisa G250 con sfera in ottone cromato (scartamento secondo DIN 3202-F4, DN200 DIN 3202-F5), con attuatore.  
2 way flanged ball valve, cast iron G250 with chrome plated ball (gauge in compliance with DIN 3202-F4, DN200 DIN 3202-F5), with actuator.



VALVOLA CON ATTUATORE SEMPLICE EFFETTO  
VALVE WITH SPRING RETURN ACTUATOR

Art. 8P0046

DN	25	32	40	50	65	80	100	125	150	200
PN	16	16	16	16	16	16	16	16	16	16
A	191	197	243	263	327	350	368	425	499	541
B	248	267	318	345	419	450	478	550	642	711
C	115	140	150	165	185	200	220	250	285	340
D	81	81	106	123	137	148	148	187	218	218
E	125	130	140	150	170	180	190	200	210	400
F	162	162	238	272	328	366	366	522	575	575
ACT.	63	63	85	100	115	125	125	160	200	200

## Art. 8P0047 - 8P0048

(Art. 750002 - 750004)



Valvola Valpres Art. 750000

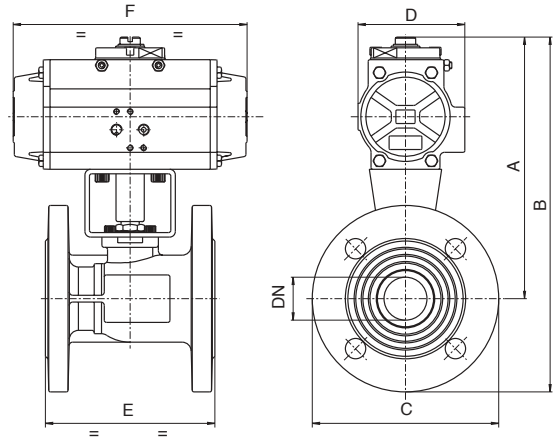
VALVOLA CON ATTUATORE DOPPIO EFFETTO  
VALVE WITH DOUBLE ACTING ACTUATOR

Art. 8P0047

DN	50	65	80	100	125
	PN 16	16	16	16	16
A	232	252	265	287	326
B	314	345	365	397	451
C	165	185	200	220	250
D	95	106	106	123	123
E	150	170	180	190	200
F	207	238	238	272	272
ACT.	75	85	85	100	100

Valvola a sfera 2 vie flangiata, in ghisa G250 con sfera in ottone cromato, passaggio VENTURI, (scartamento secondo DIN 3202-F4), con attuatore.

2 way flanged ball valve, cast iron G250 with chrome plated ball, VENTURI metric bore (gauge in compliance with DIN 3202-F4), with actuator.



VALVOLA CON ATTUATORE SEMPLICE EFFETTO  
VALVE WITH SPRING RETURN ACTUATOR

Art. 8P0048

DN	50	65	80	100	125
	PN 16	16	16	16	16
A	243	265	340	349	368
B	326	358	440	459	493
C	165	185	200	220	250
D	106	123	148	148	148
E	150	170	180	190	200
F	238	272	366	366	366
ACT.	85	100	125	125	125

## Art. 8P0049 - 8P0050

(Art. 750003 - 750005)



Valvola Valpres Art. 751000

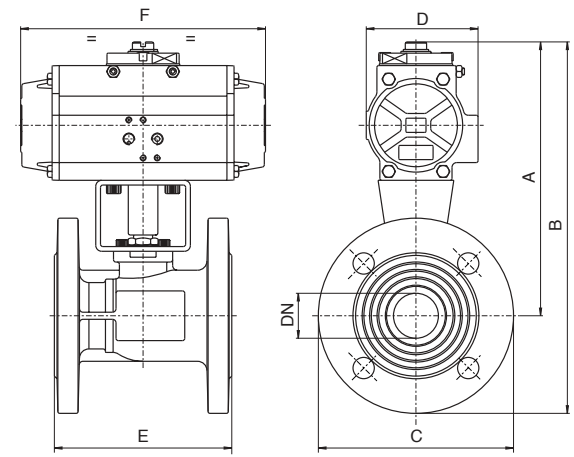
VALVOLA CON ATTUATORE DOPPIO EFFETTO  
VALVE WITH DOUBLE ACTING ACTUATOR

Art. 8P0049

DN	50	65	80	100	125
	PN 16	16	16	16	16
A	232	252	265	287	326
B	314	345	365	397	451
C	165	185	200	220	250
D	95	106	106	123	123
E	150	170	180	190	200
F	207	238	238	272	272
ACT.	75	85	85	100	100

Valvola a sfera 2 vie flangiata, in ghisa GGG40 con sfera in ottone cromato, passaggio VENTURI, omologata per gas a norma DIN DVGW (scartamento secondo DIN 3202-F4), con attuatore.

2 way flanged ball valve, cast iron GGG40 with chrome plated ball, VENTURI metric bore, gas approved as per DIN DVGW standard (gauge in compliance with DIN 3202-F4), with actuator.



VALVOLA CON ATTUATORE SEMPLICE EFFETTO  
VALVE WITH SPRING RETURN ACTUATOR

Art. 8P0050

DN	50	65	80	100	125
	PN 16	16	16	16	16
A	243	265	340	349	368
B	326	358	440	459	493
C	165	185	200	220	250
D	106	123	148	148	148
E	150	170	180	190	200
F	238	272	366	366	366
ACT.	85	100	125	125	125

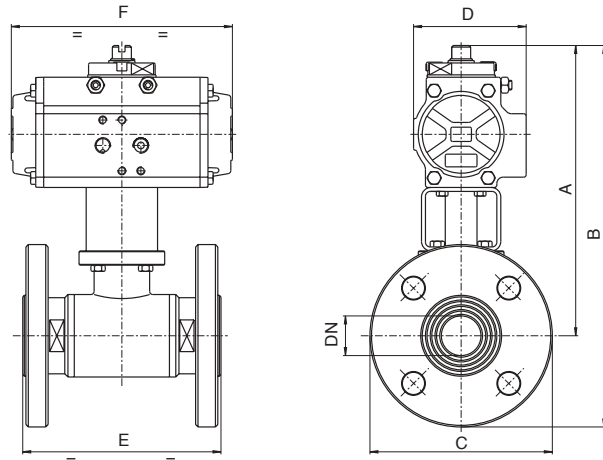


**Art. 8P0051 AISI 316 - 8P0053 AISI 316**  
(Art. 700065 - 700063)

**Art. 8P0052 AISI 304 - 8P0054 AISI 304**  
(Art. 700066 - 700064)



Valvola a sfera 2 vie flangiata, ricavata da massello, lucida, acciaio inox AISI 304-316, passaggio TOTALE, con attuatore  
2 way flanged ball valve from ingot, polished, stainless steel AISI 304-316, FULL bore, with actuator.



VALVOLA CON ATTUATORE DOPPIO EFFETTO  
VALVE WITH DOUBLE ACTING ACTUATOR

Art. 8P0051 AISI 316  
Art. 8P0052 AISI 304

DN	10	15	20	25	32	40	50	65	80	100
PN	40	40	40	40	40	25	25	16	16	16
A	169	171	175	191	207	178	186	225	235	249
B	214	219	227	249	277	253	269	317	335	359
C	90	95	105	115	140	150	165	185	200	220
D	71	71	71	71	81	81	81	106	106	106
E	110	115	120	125	130	140	150	170	180	190
F	140	140	140	140	162	162	162	238	238	238
ACT.	52	52	52	52	63	63	63	85	85	85

VALVOLA CON ATTUATORE SEMPLICE EFFETTO  
VALVE WITH SPRING RETURN ACTUATOR

Art. 8P0053 AISI 316  
Art. 8P0054 AISI 304

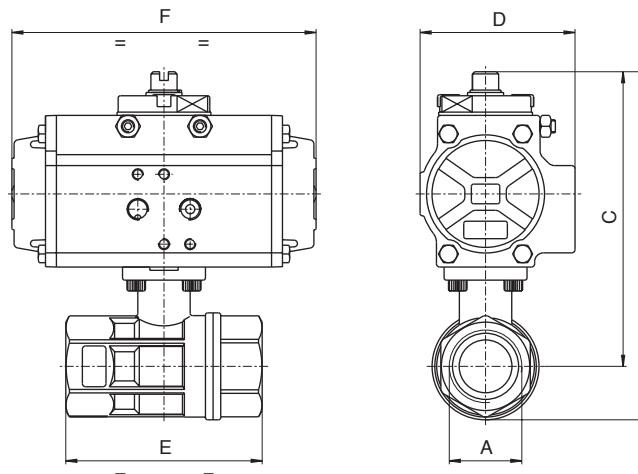
DN	10	15	20	25	32	40	50	65	80	100
PN	40	40	40	40	40	25	25	16	16	16
A	169	192	196	230	235	206	214	238	290	304
B	214	240	248	288	305	281	297	330	390	414
C	90	95	105	115	140	150	165	185	200	220
D	71	81	81	106	106	106	106	123	148	148
E	110	115	120	125	130	140	150	170	180	190
F	140	162	162	238	238	238	238	272	366	366
ACT.	52	63	63	85	85	85	85	100	125	125

**Art. 8P0079 - 8P0081**  
(Art. 700045 - 700046)

**Art. 8P0080 NPT - 8P0082 NPT**  
(Art. 700050 - 700051)



Valvola a sfera 2 vie in ottone cromato con guarnizioni PTFE+VITON, filettata F/F, PN40, con attuatore.  
2 way brass with chrome plated ball, seals in PTFE+VITON, threaded F/F, PN40, with actuator.



Valvola RB Art. 2500 - 250N NPT

VALVOLA CON ATTUATORE DOPPIO EFFETTO  
VALVE WITH DOUBLE ACTING ACTUATOR

Art. 8P0079  
Art. 8P0080 NPT

DN	08	10	15	20	25	32	40	50	65	80	100
PN	40	40	40	40	40	40	40	40	40	40	40
A	1/4"	3/8"	1/2"	3/4"	1"	1 1/4"	1 1/2"	2"	2 1/2"	3"	4"
B	115	115	115	120	135	144	190	209	244	266	331
C	98	98	98	100	111	114	154	163	188	199	248
D	45	45	45	45	45	45	71	71	81	81	106
E	67	67	67	76	90	102	114	138	157	188	225
F	110	110	110	110	110	110	140	140	162	162	238
ACT.	32	32	32	32	32	32	52	52	63	63	85

VALVOLA CON ATTUATORE SEMPLICE EFFETTO  
VALVE WITH SPRING RETURN ACTUATOR

Art. 8P0081  
Art. 8P0082 NPT

DN	08	10	15	20	25	32	40	50	65	80	100
PN	40	40	40	40	40	40	40	40	40	40	40
A	1/4"	3/8"	1/2"	3/4"	1"	1 1/4"	1 1/2"	2"	2 1/2"	3"	4"
B	140	140	140	142	160	168	201	220	272	294	344
C	123	123	123	125	135	139	165	174	216	227	261
D	71	71	71	71	71	71	81	81	106	106	123
E	67	67	67	76	90	102	114	138	157	188	225
F	140	140	140	140	140	140	162	162	238	238	272
ACT.	52	52	52	52	52	52	63	63	85	85	100

**Art. 8P0059 (T) - 8P0061 (T)**

(Art. 770026 - 770028)

**Art. 8P0060 (L) - 8P0062 (L)**

(Art. 770027 - 770029)



Valvola Valpres Art. 772000 (T) - 775000 (L)

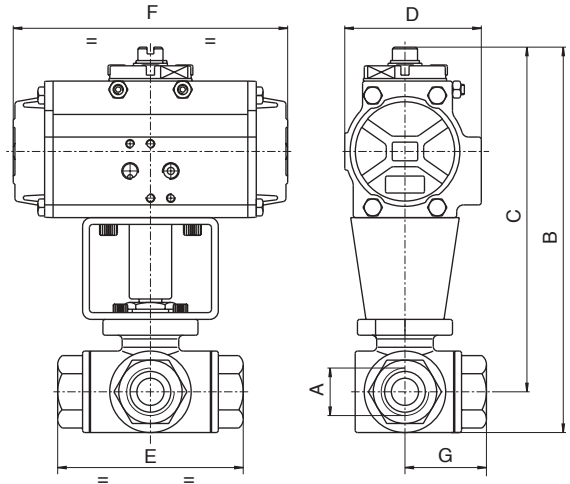
VALVOLA CON ATTUATORE DOPPIO EFFETTO  
VALVE WITH DOUBLE ACTING ACTUATOR

Art. 8P0059 tre vie a T  
Art. 8P0060 tre vie a L

DN	8	10	15	20	25	32	40	50
PN	50	50	50	50	50	50	50	50
A	1/4"	3/8"	1/2"	3/4"	1"	1 1/4"	1 1/2"	2"
B	190	190	190	225	230	246	281	300
C	172	172	172	202	204	212	243	252
D	71	71	71	81	81	81	106	106
E	79	79	79	86	108	124	134	164
F	140	140	140	162	162	162	238	238
G	39	39	39	43	54	62	67	81
ACT.	52	52	52	63	63	63	85	85

Valvola a sfera 3 vie, microfusa, acciaio inox AISI 316, filettata F/F/F, passaggio RIDOTTO, sfera forata a "T" o "L", con attuatore.

3 way ball valve, investment casted, in stainless steel AISI 316, threaded F/F/F REDUCED bore, with actuator.



VALVOLA CON ATTUATORE SEMPLICE EFFETTO  
VALVE WITH SPRING RETURN ACTUATOR

Art. 8P0061 tre vie a T  
Art. 8P0062 tre vie a L

DN	8	10	15	20	25	32	40	50
PN	50	50	50	50	50	50	50	50
A	1/4"	3/8"	1/2"	3/4"	1"	1 1/4"	1 1/2"	2"
B	201	201	201	237	258	274	294	313
C	183	183	183	219	232	240	256	265
D	81	81	81	95	106	106	123	123
E	79	79	79	86	108	124	134	164
F	162	162	162	207	238	238	272	272
G	39	39	39	43	54	62	67	81
ACT.	63	63	63	75	85	85	100	100

**Art. 8P0063 (T) - 8P0067 (T)**

(Art. 770011 - 770018)

**Art. 8P0064 (L) - 8P0068 (L)**

(Art. 770012 - 770019)



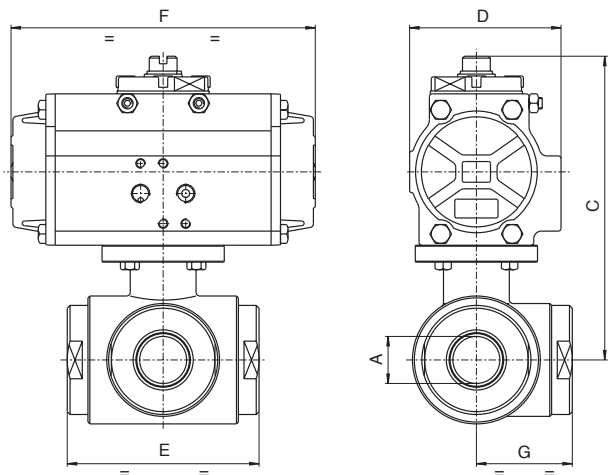
VALVOLA CON ATTUATORE DOPPIO EFFETTO  
VALVE WITH DOUBLE ACTING ACTUATOR

Art. 8P0063 T  
Art. 8P0064 L

DN	12	12	15	20	25	32	40	50	65	80	100
PN	40	40	40	40	40	40	40	25	25	16	16
A	1/4"	3/8"	1/2"	3/4"	1"	1 1/4"	1 1/2"	2"	2 1/2"	3"	4"
C	136	136	139	157	162	182	206	220	230	258	273
D	71	71	71	81	81	81	95	106	106	123	123
E	72	72	82	92	102	118	134	144	160	200	240
F	140	140	140	162	162	162	207	238	238	272	272
G	36	36	41	46	51	59	67	72	80	100	120
ACT.	52	52	52	63	63	63	75	85	85	100	100

Valvola a sfera ricavata da massello, 3 vie, lucida, acciaio inox AISI 316, filettata F/F/F, passaggio TOTALE, a sfera forata a "T" o "L", con attuatore

3 way polished ball valve, from ingot, stainless steel AISI 316, threaded F/F/F, FULL bore, "T" or "L" port, with actuator.



VALVOLA CON ATTUATORE SEMPLICE EFFETTO  
VALVE WITH SPRING RETURN ACTUATOR

Art. 8P0067 T  
Art. 8P0068 L

DN	12	12	15	20	25	32	40	50	65	80	100
PN	40	40	40	40	40	40	40	25	25	16	16
A	1/4"	3/8"	1/2"	3/4"	1"	1 1/4"	1 1/2"	2"	2 1/2"	3"	4"
C	197	197	200	185	190	210	231	233	273	300	315
D	81	81	81	106	106	106	123	123	137	148	148
E	72	72	82	92	102	118	134	144	160	200	240
F	162	162	162	238	238	238	272	272	328	366	366
G	36	36	41	46	51	59	67	72	80	100	120
ACT.	63	63	63	85	85	85	100	100	115	125	125

**Art. 8P0065 (T) - 8P0069 (T)**

(Art. 770006 - 770020)

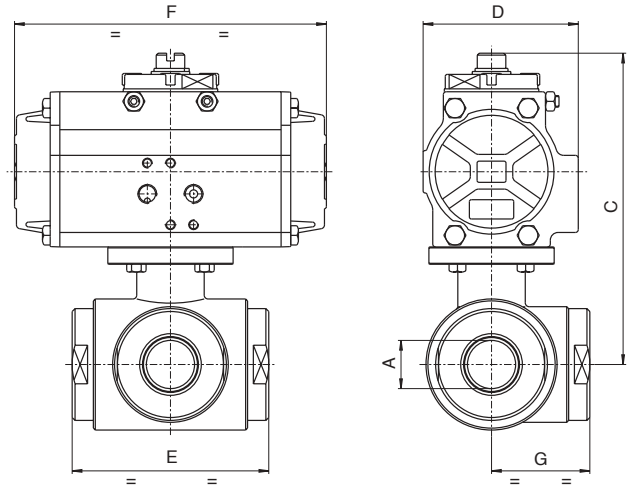
**Art. 8P0066 (L) - 8P0070 (L)**

(Art. 770010 - 770021)

VALVOLA CON ATTUATORE DOPPIO EFFETTO  
VALVE WITH DOUBLE ACTING ACTUATORArt. 8P0065 T  
Art. 8P0066 L

DN	12	12	15	20	25	32	40	50	65	80	100
PN	40	40	40	40	40	40	40	25	25	16	16
A	1/4"	3/8"	1/2"	3/4"	1"	1" 1/4	1" 1/2	2"	2" 1/2	3"	4"
C	136	136	139	157	162	182	206	220	230	258	273
D	71	71	81	81	81	81	95	106	106	123	123
E	72	72	82	92	102	118	134	144	160	200	240
F	140	140	140	162	162	162	207	238	238	272	272
G	36	36	41	46	51	59	67	72	80	100	120
ACT.	52	52	52	63	63	63	75	85	85	100	100

Valvola a sfera ricavata da massello, 3 vie, lucida, acciaio inox AISI 304, filettata F/F/F, passaggio TOTALE, a sfera forata a "T" o "L", con attuatore  
3 way polished ball valve, from *ingot*, stainless steel AISI 304, threaded F/F/F, FULL bore, "T" or "L" port, with actuator.

VALVOLA CON ATTUATORE SEMPLICE EFFETTO  
VALVE WITH SPRING RETURN ACTUATORArt. 8P0069 T  
Art. 8P0070 L

DN	12	12	15	20	25	32	40	50	65	80	100
PN	40	40	40	40	40	40	40	25	25	16	16
A	1/4"	3/8"	1/2"	3/4"	1"	1" 1/4	1" 1/2	2"	2" 1/2	3"	4"
C	197	197	200	185	190	210	231	233	273	300	315
D	81	81	81	106	106	106	123	123	137	148	148
E	72	72	82	92	102	118	134	144	160	200	240
F	162	162	162	238	238	238	272	272	328	366	366
G	36	36	41	46	51	59	67	72	80	100	120
ACT.	63	63	63	85	85	85	100	100	115	125	125

**Art. 8P0071 (T) - 8P0075 (T)**

(Art. 770014 - 770022)

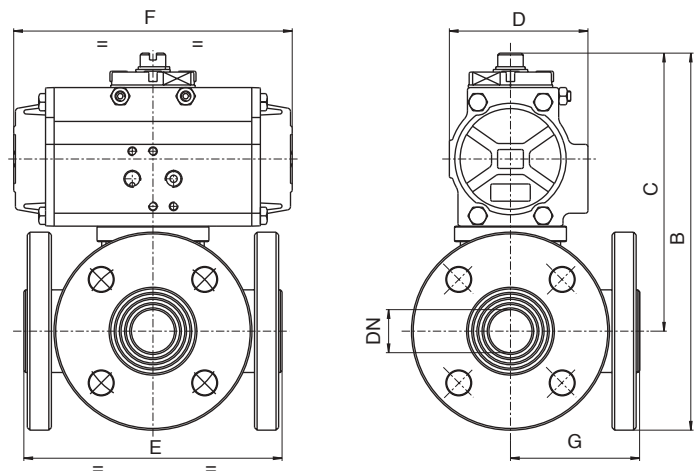
**Art. 8P0072 (L) - 8P0076 (L)**

(Art. 770015 - 770023)

VALVOLA CON ATTUATORE DOPPIO EFFETTO  
VALVE WITH DOUBLE ACTING ACTUATORArt. 8P0071 T  
Art. 8P0072 L

DN	10	15	20	25	32	40	50	65	80	100
PN	40	40	40	40	40	40	25	25	16	16
B	181	186	210	219	252	281	303	323	358	383
C	136	139	157	162	182	206	220	230	258	273
D	71	71	81	81	81	95	106	106	123	123
E	120	130	140	150	180	200	220	240	260	300
F	140	140	162	162	162	207	238	238	272	272
G	60	65	70	75	90	100	110	120	130	150
ACT.	52	52	63	63	63	75	85	85	100	100

Valvola a sfera ricavata da massello, 3 vie, lucida, acciaio inox AISI 316, flangiata, a passaggio TOTALE, sfera forata a "T" o "L", con attuatore  
3 way flanged polished ball valve from *ingot*, stainless steel AISI 316, FULL bore, "T" or "L" port, with actuator.

VALVOLA CON ATTUATORE SEMPLICE EFFETTO  
VALVE WITH SPRING RETURN ACTUATORArt. 8P0075 T  
Art. 8P0076 L

DN	10	15	20	25	32	40	50	65	80	100
PN	40	40	40	40	40	40	25	25	16	16
B	242	247	238	247	280	306	316	366	400	425
C	197	200	185	190	210	231	233	273	300	315
D	81	81	106	106	106	123	123	137	148	148
E	120	130	140	150	180	200	220	240	260	300
F	162	162	238	238	238	272	272	328	366	366
G	60	65	70	75	90	100	110	120	130	150
ACT.	63	63	85	85	85	100	100	115	125	125

**Art. 8P0073 (T) - 8P0077 (T)**

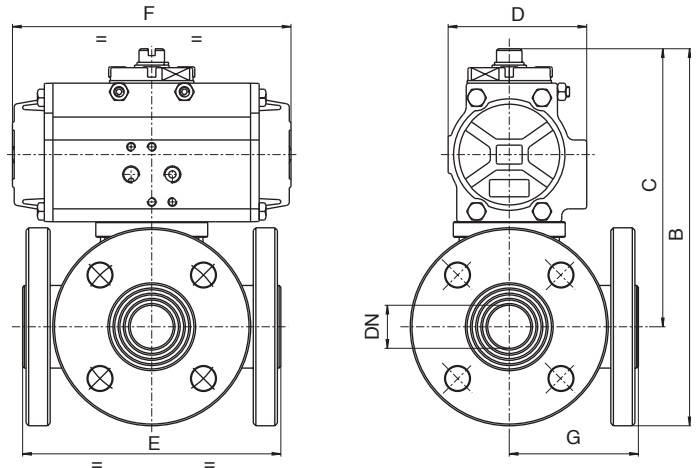
(Art. 770016 - 770024)

**Art. 8P0074 (L) - 8P0078 (L)**

(Art. 770017 - 770025)



Valvola a sfera ricavata da massello, 3 vie, lucida, acciaio inox AISI 304, flangiata, passaggio TOTALE, sfera forata a "T" o "L", con attuatore  
 3 way flanged polished ball valve from ingot, stainless steel AISI 304, FULL bore, "T" or "L" port, with actuator.



VALVOLA CON ATTUATORE DOPPIO EFFETTO  
 VALVE WITH DOUBLE ACTING ACTUATOR

Art. 8P0073 T  
 Art. 8P0074 L

DN	10	15	20	25	32	40	50	65	80	100
PN	40	40	40	40	40	40	25	25	16	16
B	181	186	210	219	252	281	303	323	358	383
C	136	139	157	162	182	206	220	230	258	273
D	71	71	81	81	81	95	106	106	123	123
E	120	130	140	150	180	200	220	240	260	300
F	140	140	162	162	162	207	238	238	272	272
G	60	65	70	75	90	100	110	120	130	150
ACT.	52	52	63	63	63	75	85	85	100	100

VALVOLA CON ATTUATORE SEMPLICE EFFETTO  
 VALVE WITH SPRING RETURN ACTUATOR

Art. 8P0077 T  
 Art. 8P0078 L

DN	10	15	20	25	32	40	50	65	80	100
PN	40	40	40	40	40	40	25	25	16	16
B	242	247	238	247	280	306	316	366	400	425
C	197	200	185	190	210	231	233	273	300	315
D	81	81	106	106	106	123	123	137	148	148
E	120	130	140	150	180	200	220	240	260	300
F	162	162	238	238	238	272	272	328	366	366
G	60	65	70	75	90	100	110	120	130	150
ACT.	63	63	85	85	85	100	100	115	125	125

**Art. 8P0083 (T) - 8P0085 (T)**

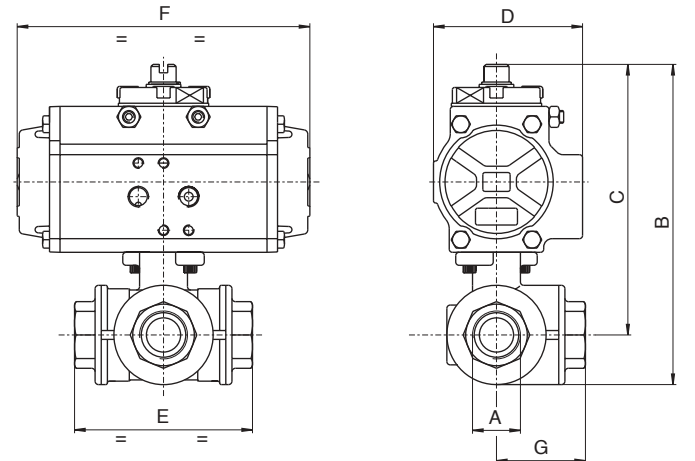
(Art. 770032 - 770033)

**Art. 8P0084 (L) - 8P0086 (L)**

(Art. 770030 - 770031)



Valvola a sfera 3 vie, in ottone CW 617N con guarnizioni PTFE+VITON, filettata F/F/F, passaggio TOTALE, sfera forata a "T" o "L", con attuatore.  
 3 way brass ball valve CW 617N, seals in PTFE+VITON, threaded F/F/F, FULL bore, "T" or "L" port, with actuator.



Valvola RB Art. 3500 (T) - 3600 (L)

VALVOLA CON ATTUATORE DOPPIO EFFETTO  
 VALVE WITH DOUBLE ACTING ACTUATOR

Art. 8P0083 T  
 Art. 8P0084 L

DN	08	10	15	20	25	32	40	50
PN	30	30	30	30	16	10	10	10
A	1/4"	3/8"	1/2"	3/4"	1"	1 1/4"	1 1/2"	2"
B	113	113	118	155	167	185	218	258
C	96	96	98	131	137	149	175	202
D	45	45	45	71	71	71	81	95
E	67	67	77	87	105	123	139	166
F	110	110	110	140	140	140	162	207
G	34	34	39	44	53	62	70	83
ACT.	32	32	32	52	52	52	63	75

VALVOLA CON ATTUATORE SEMPLICE EFFETTO  
 VALVE WITH SPRING RETURN ACTUATOR

Art. 8P0085 T  
 Art. 8P0086 L

DN	8	10	15	20	25	32	40	50
PN	30	30	30	30	16	10	10	10
A	1/4"	3/8"	1/2"	3/4"	1"	1 1/4"	1 1/2"	2"
B	137	137	142	166	178	196	246	282
C	120	120	123	142	148	160	203	227
D	71	71	71	81	81	81	106	123
E	67	67	77	87	105	123	139	166
F	140	140	140	162	162	162	238	272
G	34	34	39	44	53	62	70	83
ACT.	52	52	52	63	63	63	85	100



**Art. 8P0055 (L)- 8P0056 (L)**

(Art. 770042 (L) - 770043 (L))

**Art. 8P0113 (T)- 8P0114 (T)**

(Art. 770050 (T) - 770051 (T))



Valvola Valpres Art. 776000 (L) - 776001 (T)

VALVOLA CON ATTUATORE DOPPIO EFFETTO  
VALVE WITH DOUBLE ACTING ACTUATORArt. 8P0055  
Art. 8P0113

DN	15	20	25	32	40	50	65	80	100
PN	16	16	16	16	16	16	16	16	16
A	147	176	181	188	214	237	265	274	323
B	191	225	235	253	284	317	355	374	433
Ø C	89	99	109	130	140	160	180	200	220
D	45	71	71	71	81	95	106	106	123
E	40	40	46	58	71	82	106	122	152
F	110	140	140	140	162	207	238	238	272
Ø G	95	105	115	140	150	165	185	200	220
H	76	82	86	100	105	115	125	150	159
ACT.	32	52	52	52	63	75	85	85	100

**Art. 8P0057 (L)- 8P0058 (L)**

(Art. 770046 - 770047)

**Art. 8P0115 (T)- 8P0116 (T)**

(Art. 770052 - 770053)

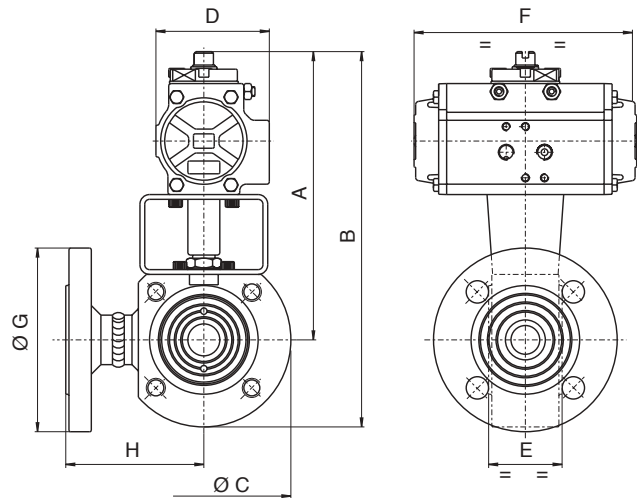


Valvola Valpres Art. 776007 (L) - 776010 (T)

VALVOLA CON ATTUATORE DOPPIO EFFETTO  
VALVE WITH DOUBLE ACTING ACTUATORArt. 8P0057 tre vie a L  
Art. 8P0115 tre vie a T

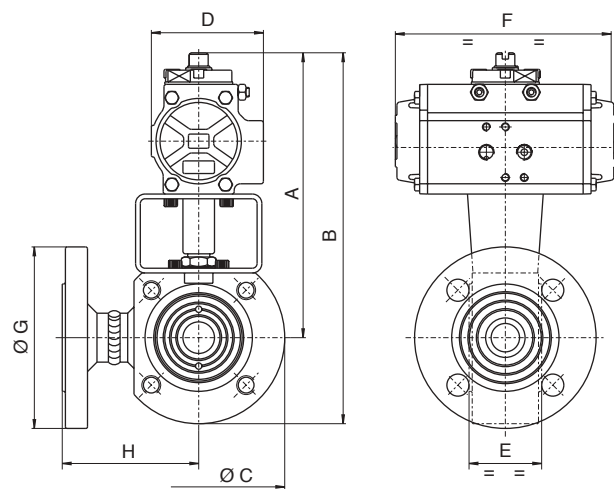
DN	15	20	25	32	40	50	65	80	100
PN	16	16	16	16	16	16	16	16	16
A	147	176	181	188	214	237	265	274	323
B	191	225	235	253	284	317	355	374	433
Ø C	89	99	109	130	140	160	180	200	220
D	45	71	71	71	81	95	106	106	123
E	40	40	46	58	71	82	106	122	152
F	110	140	140	140	162	207	238	238	272
Ø G	95	105	115	140	150	165	185	200	220
H	76	82	86	100	105	115	125	150	159
ACT.	32	52	52	52	63	75	85	85	100

Valvola a sfera tipo "WAFER" (deviatore di flusso), 3 vie sfera forata a "L" o "T" con due guarnizioni, flangiata PN16 in acciaio al carbonio ASTM A105, passaggio RIDOTTO, con attuatore.  
3 way "WAFER" ball valve (diverting), "L" or "T" port, two seats, flanged PN16, in carbon steel ASTM A105, REDUCED bore, with actuator.

VALVOLA CON ATTUATORE SEMPLICE EFFETTO  
VALVE WITH SPRING RETURN ACTUATORArt. 8P0056  
Art. 8P0114

DN	15	20	25	32	40	50	65	80	100
PN	16	16	16	16	16	16	16	16	16
A	171	187	192	199	242	262	328	349	365
B	216	236	246	264	312	342	418	449	475
Ø C	89	99	109	130	140	160	180	200	220
D	71	81	81	81	106	123	137	148	148
E	40	40	46	58	71	82	106	122	152
F	140	162	162	162	238	272	328	366	366
Ø G	95	105	115	140	150	165	185	200	220
H	76	82	86	100	105	115	125	150	159
ACT.	52	63	63	63	85	100	115	125	125

Valvola a sfera tipo "WAFER" (deviatore di flusso), 3 vie, sfera forata a "L" o "T" con due guarnizioni, flangiata PN16, in acciaio inox AISI 316, passaggio RIDOTTO, con attuatore.  
3 way "WAFER" ball valve (diverting), "L" or "T" port, two seats, flanged PN16, in stainless steel AISI 316, REDUCED bore, with actuator.

VALVOLA CON ATTUATORE SEMPLICE EFFETTO  
VALVE WITH SPRING RETURN ACTUATORArt. 8P0058 tre vie a L  
Art. 8P0116 tre vie a T

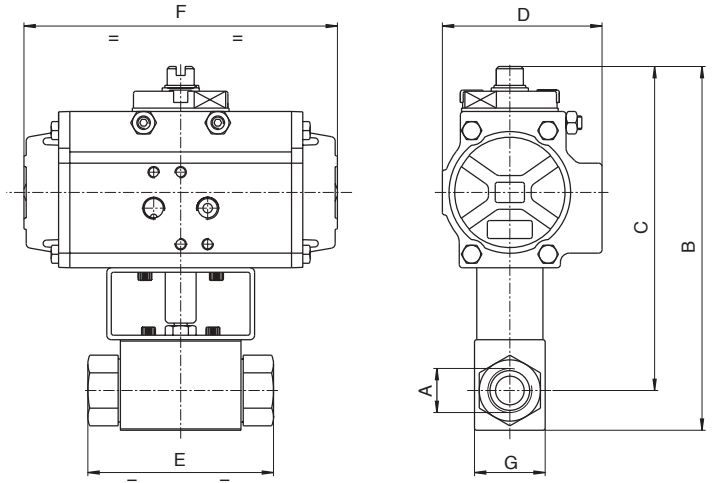
DN	15	20	25	32	40	50	65	80	100
PN	16	16	16	16	16	16	16	16	16
A	171	187	192	199	242	262	328	349	365
B	216	236	246	264	312	342	418	449	475
Ø C	89	99	109	130	140	160	180	200	220
D	71	81	81	81	106	123	137	148	148
E	40	40	46	58	71	82	106	122	152
F	140	162	162	162	238	272	328	366	366
Ø G	95	105	115	140	150	165	185	200	220
H	76	82	86	100	105	115	125	150	159
ACT.	52	63	63	63	85	100	115	125	125

## Art. 8P0091 - 8P0092

(Art. 906000 - 906001)



Valvola a sfera 2 vie, in CF9SMn28, filettata F/F, per alta pressione, con attuatore.  
2 way ball valve in CF9SMn28, F/F threaded, for high pressure, with actuator.



VALVOLA CON ATTUATORE DOPPIO EFFETTO  
VALVE WITH DOUBLE ACTING ACTUATOR

Art. 8P0091

DN	10	16	20	25	32	40	50
PN	500	400	315	315	350	350	350
A	3/8"	1/2"	3/4"	1"	1 1/4"	1 1/2"	2"
B	168	187	214	222	268	285	329
C	150	168	190	193	227	235	270
D	71	81	95	95	123	123	137
E	72	83	95	113	111	130	140
F	140	162	207	207	272	272	328
G	32	38	49	58	81	100	118
ACT.	52	63	75	75	100	100	115

VALVOLA CON ATTUATORE SEMPLICE EFFETTO  
VALVE WITH SPRING RETURN ACTUATOR

Art. 8P0092

DN	10	16	20	25	32	40	50
PN	500	400	315	315	350	350	350
A	3/8"	1/2"	3/4"	1"	1 1/4"	1 1/2"	2"
B	195	203	239	247	298	315	395
C	178	184	214	217	257	265	336
D	95	95	123	123	137	137	187
E	72	83	95	113	111	130	140
F	207	207	272	272	328	328	522
G	32	38	49	58	81	100	118
ACT.	75	75	100	100	115	115	160

## Art. 8P0093 (L) - 8P0095 (L)

(Art. 907000 - 907001)

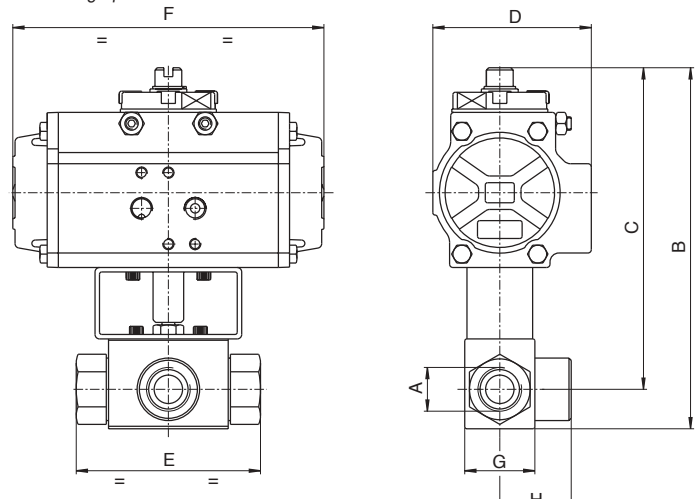
## Art. 8P0094 (T) - 8P0096 (T)

(Art. 907100 - 907101)



Valvola a sfera 3 vie, in CF9SMn28, con sfera forata a "L" o "T", solo deviatrice, filettata F/F/F, per alta pressione, con attuatore.

3 way ball valve in CF9SMn28, "L" or "T" port, only diverting, F/F/F threaded, for high pressure, with actuator.



VALVOLA CON ATTUATORE DOPPIO EFFETTO  
VALVE WITH DOUBLE ACTING ACTUATOR

Art. 8P0093 L  
Art. 8P0094 T

DN	10	13	20	25	25/32
PN	315	315	315	315	315
A	3/8"	1/2"	3/4"	1"	1 1/4"
B	168	181	214	222	247
C	150	162	190	193	217
D	71	81	95	95	123
E	72	83	95	113	120
F	140	162	207	207	272
G	32	35	49	58	58
H	36	42	48	57	60
ACT.	52	63	75	75	100

VALVOLA CON ATTUATORE SEMPLICE EFFETTO  
VALVE WITH SPRING RETURN ACTUATOR

Art. 8P0095 L  
Art. 8P0096 T

DN	10	13	20	25	25/32
PN	315	315	315	315	315
A	3/8"	1/2"	3/4"	1"	1 1/4"
B	195	197	239	247	277
C	178	178	214	217	247
D	95	95	123	123	137
E	72	83	95	113	120
F	207	207	272	272	328
G	32	35	49	58	58
H	36	42	48	57	60
ACT.	75	75	100	100	115



ISO 9001

CONDIZIONI DI ABBINAMENTO: FLUIDO H2O - T 20°C - P 6 bar. Attuatore P 6 ÷ 7 bar



Fitting conditions: Fluid H2O - T 20°C - P 6 bar. Actuator P 6 ÷ 7 bar

Art. **8P0097** PN16 DISC GGG40 - **8P0098** PN16 DISC GGG40Art. **8P0099** PN10 DISC GGG40 - **8P0100** PN10 DISC GGG40Art. **8P0101** PN16 DISC INOX - **8P0102** PN16 DISC INOXArt. **8P0103** PN10 DISC INOX - **8P0104** PN10 DISC INOX

Valvola a farfalla tipo "WAFER" PN10/16, corpo in ghisa G250 + vernice epossidica, guarnizione in EPDM, con attuatore.

Butterfly valve "WAFER" type PN10/16, body in cast iron G250+Epoxy painting, EPDM seat, with actuator.

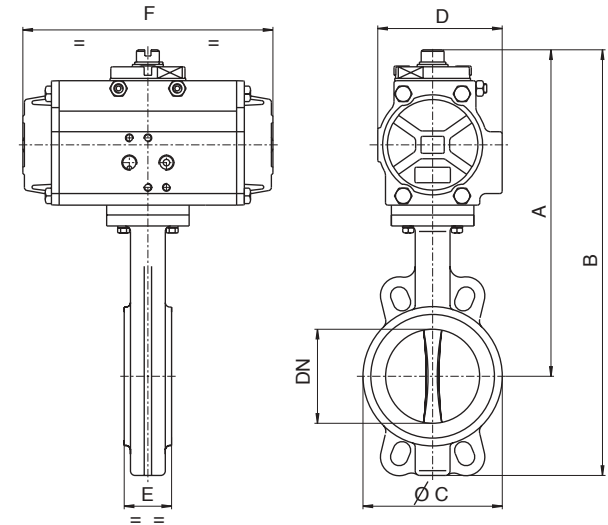


Valvola Valpres Art. 600104 PN16 DISC GGG40 - 600105 PN16 DISC INOX

Valvola Valpres Art. 600102 PN10 DISC GGG40 - 600103 PN10 DISC INOX

Art. 8P0097 DA DN50 A DN150  
Art. 8P0099 DA DN200 A DN300  
Art. 8P0101 DA DN32 A DN150  
Art. 8P0103 DA DN200 A DN300VALVOLA CON ATTUATORE DOPPIO EFFETTO  
VALVE WITH DOUBLE ACTING ACTUATOR

DN	32	40	50	65	80	100	125	150	200	250	300
PN	16	16	16	16	16	16	16	16	10	10	10
A	243	243	243	255	266	300	325	337	431	537	575
B	301	301	306	327	360	408	445	473	596	739	810
Ø C	75	82	96	109	126	152	182	207	262	317	373
D	71	71	71	71	81	95	106	106	137	148	148
E	33	33	43	46	46	52	54	56	59	67	77
F	140	140	140	140	162	207	238	238	328	366	366
ACT.	52	52	52	63	75	85	85	115	125	125	125

Art. **8P0105** PN16 DISC GGG40 - **8P0106** PN16 DISC GGG40Art. **8P0107** PN10 DISC GGG40 - **8P0108** PN10 DISC GGG40Art. **8P0109** PN16 DISC INOX - **8P0110** PN16 DISC INOXArt. **8P0111** PN10 DISC INOX - **8P0112** PN10 DISC INOXVALVOLA CON ATTUATORE SEMPLICE EFFETTO  
VALVE WITH SPRING RETURN ACTUATOR

DN	32	40	50	65	80	100	125	150	200	250	300
PN	16	16	16	16	16	16	16	16	10	10	10
A	250	250	250	262	292	310	338	348	472	622	660
B	308	308	313	334	386	418	458	484	637	824	895
Ø C	75	82	96	109	126	152	182	207	262	317	373
D	81	81	81	81	106	106	123	123	187	218	218
E	33	33	43	46	46	52	54	56	59	67	77
F	162	162	162	162	238	238	272	272	522	575	575
ACT.	63	63	63	63	85	85	100	100	160	200	200

Art. 8P0098 DA DN50 A DN150  
Art. 8P0100 DA DN200 A DN300  
Art. 8P0102 DA DN32 A DN150  
Art. 8P0104 DA DN200 A DN300

Valvola a farfalla tipo "LUG" PN10/16, corpo in ghisa GGG40 + vernice epossidica, guarnizione in EPDM, con attuatore.

Butterfly valve "LUG" type PN10/16, body in cast iron GGG40+Epoxy painting, EPDM seat, with actuator.

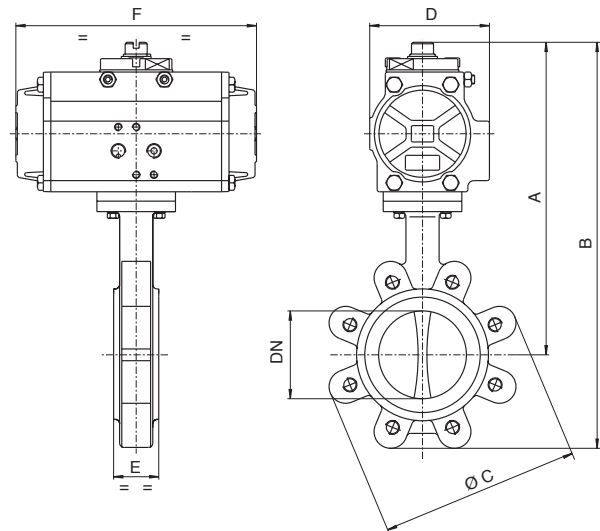


Valvola Valpres Art. 600204 PN16 DISC GGG40 - 600205 PN16 DISC INOX

Valvola Valpres Art. 600202 PN10 DISC GGG40 - 600203 PN10 DISC INOX

Art. 8P0105 DA DN50 A DN150  
Art. 8P0107 DA DN200 A DN300  
Art. 8P0109 DA DN50 A DN150  
Art. 8P0111 DA DN200 A DN300VALVOLA CON ATTUATORE DOPPIO EFFETTO  
VALVE WITH DOUBLE ACTING ACTUATOR

DN	50	65	80	100	125	150	200	250	300
PN	16	16	16	16	16	16	10	10	10
A	243	255	266	300	325	337	431	537	575
B	306	327	360	408	445	473	596	739	810
Ø C	165	185	200	228	253	285	342	406	483
D	71	71	81	95	106	106	137	148	148
E	43	46	46	52	54	56	59	67	77
F	140	140	162	207	238	238	328	366	366
ACT.	52	52	63	75	85	85	115	125	125

VALVOLA CON ATTUATORE SEMPLICE EFFETTO  
VALVE WITH SPRING RETURN ACTUATOR

DN	50	65	80	100	125	150	200	250	300
PN	16	16	16	16	16	16	10	10	10
A	250	262	292	310	338	348	472	622	660
B	313	334	386	418	458	484	637	824	895
Ø C	165	185	200	228	253	285	342	406	483
D	81	81	106	106	123	123	187	218	218
E	43	46	46	52	54	56	59	67	77
F	162	162	238	238	272	272	522	575	575
ACT.	63	63	85	85	100	100	160	200	200

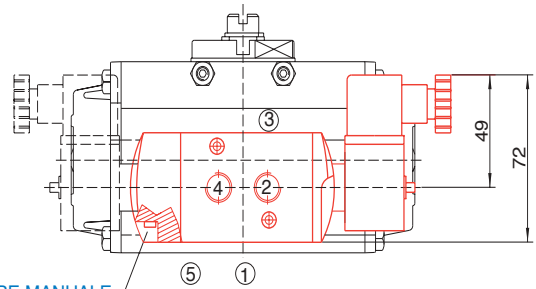
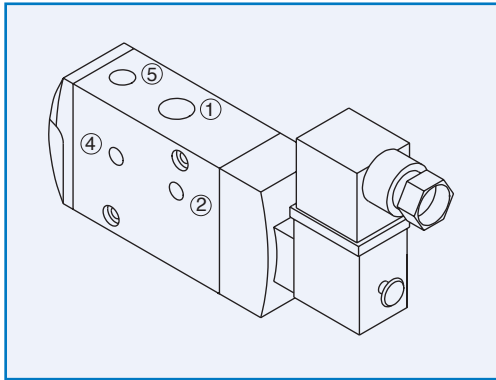
Art. 8P0106 DA DN50 A DN150  
Art. 8P0108 DA DN200 A DN300  
Art. 8P0110 DA DN50 A DN150  
Art. 8P0112 DA DN200 A DN300

# ACCESSORI

## *Accessories*

ELETTROVALVOLA 3/2 5/2 NAMUR

NAMUR SOLENOID VALVE 3/2 5/2

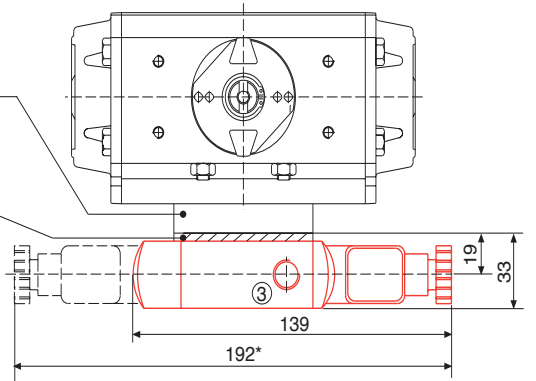


OPERATORE MANUALE  
Manual intervention

BASE NAMUR  
PER MOD. 32/200/270  
Namur plate,  
for models 32/200/270

ADATTATORE 3/2 - 5/2  
Adapter 3/2 - 5/2

\*BISTABILE  
\* Bistable



E' POSSIBILE CAMBIARE L'ESECUZIONE DA 5/2 (PER ATTUATORE DOPPIO EFFETTO) A 3/2 (PER ATTUATORE SEMPLICE EFFETTO) UTILIZZANDO I CORRISPONDENTI ADATTATORI IN DOTAZIONE

It is possible to change the execution from 5/2 (for double acting actuator) into 3/2 (for spring return actuator) using the adapters supplied with the solenoid valve

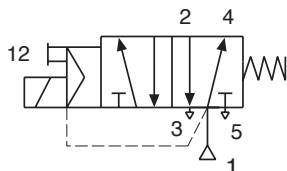
- NORMALMENTE CHIUSO: CONNESSIONI PNEUMATICHE 1 E 5 VERSO IL BASSO
- NORMALMENTE APERTO: CONNESSIONI PNEUMATICHE 1 E 5 VERSO L'ALTO (SOLO VERSIONE DOPPIO EFFETTO 5/2)

- Normally closed: pneumatic connections 1 and 5 toward actuator top
- Normally open: pneumatic connections 1 and 5 toward actuator bottom (only for 5/2 double acting version)

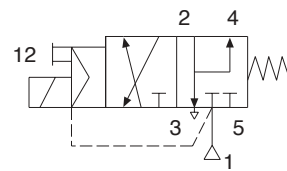
PRINCIPALI CARATTERISTICHE / Main characteristics

MATERIALE CORPO Body material	ALLUMINIO ANODIZZATO NERO	Black anodized aluminum
MATERIALE GUARNIZIONE Seal material	NBR + PUR	NBR + PUR
FLUIDO DI ALIMENTAZIONE Supply medium	ARIA FILTRATA O GAS INERTI	Filtered air or inert gases
TEMPERATURA DI ESERCIZIO Working temperature	DA -25°C A +60°C	-25°C to +60°C
PRESSIONE DI ESERCIZIO Working pressure	DA 2 A 10 Bar	2 - 10 Bar
CONNESSIONI PNEUMATICHE Pneumatic connections	INGRESSO 1 G1/4" NAMUR INGRESSI 3 E 5 G1/8"	Port 1: G1/4" Namur Ports 3 and 5: G 1/8"
PORTATA A 6 bar Flow at 6 bar	700 l/min	700 l/min
CONNESSIONI ELETTRICHE Electric connections	TYPE 22, SPADE PLUG (PG 9P)	Type 22, spade plug (PG 9P)
GRADO DI PROTEZIONE Protection	IP 65	IP 65
PARTI INTERNE Internal parts	ZAMA - ACCIAIO - ALLUMINIO - POM	Zamak, steel, aluminum, POM

SCHEMA DI FUNZIONAMENTO 5/2  
Working scheme 5/2



SCHEMA DI FUNZIONAMENTO 3/2  
Working scheme 3/2



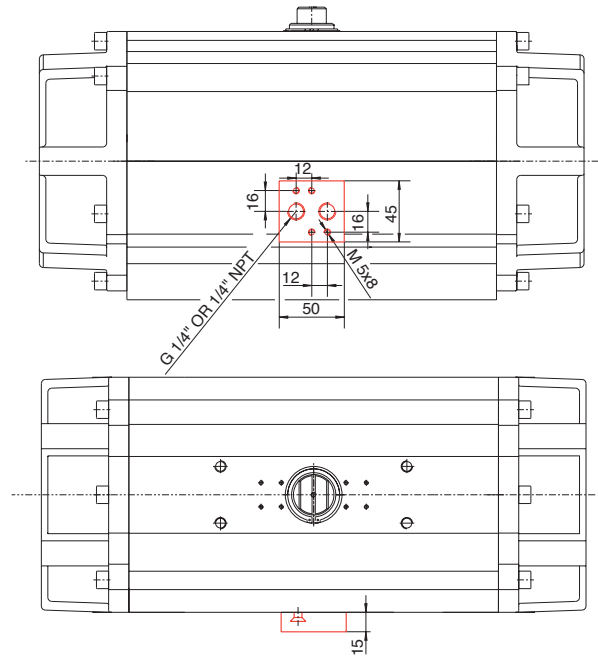
# BASI PER MONTAGGIO ELETTROVALVOLE

## PLATES FOR SOLENOID VALVE ASSEMBLY

### BASE NAMUR

#### NAMUR PLATE

BASE NAMUR - Namur plate	
MATERIALE BASE <i>Plate material</i>	ALLUMINIO <i>Aluminium</i>
TRATTAMENTO <i>Treatment</i>	OSSIDAZIONE DURA <i>Hard anodization</i>
MATERIALE GUARNIZIONE <i>Seal material</i>	VITON <i>Viton</i>
MATERIALE VITI <i>Screw material</i>	ACCIAIO INOX Cl. A2 <i>Stainless steel cl.A2</i>



	PER ORDINAZIONE <i>For order</i>
BASE NAMUR 1/4" GAS <i>Namur plate 1/4" gas</i>	RI 3136
BASE NAMUR 1/4" NPT <i>Namur plate 1/4" NPT</i>	RI 3137

LA BASE NAMUR E' NECESSARIA PER: MOD. 200-270

MOD. 32 SE NECESSARIO MONTARE L'ELETTROVALVOLA PARALLELA ALL' ATTUATORE

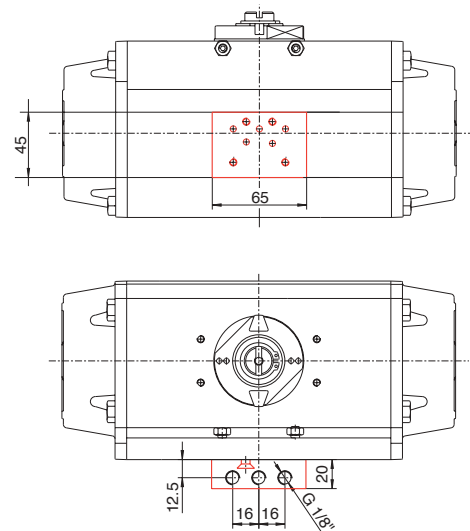
*The Namur plate is necessary: mod.200 and 270*

*mod.32, if necessary solenoid valve assembly parallel to the actuator*

### BASE ISO

#### ISO PLATE

BASE ISO - Iso plate	
MATERIALE BASE <i>Plate material</i>	ALLUMINIO <i>Aluminium</i>
TRATTAMENTO <i>Treatment</i>	OSSIDAZIONE DURA <i>Hard anodization</i>
MATERIALE GUARNIZIONE <i>Seal material</i>	VITON <i>Viton</i>
MATERIALE VITI <i>Screw material</i>	ACCIAIO INOX Cl. A2 <i>Stainless steel cl.A2</i>



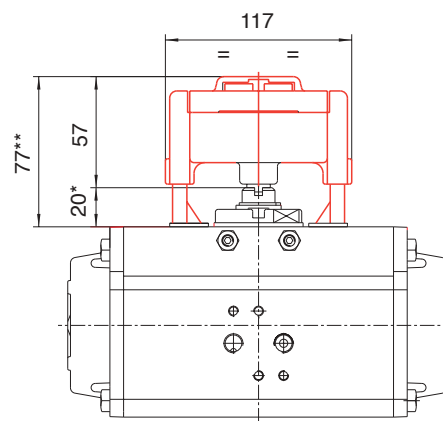
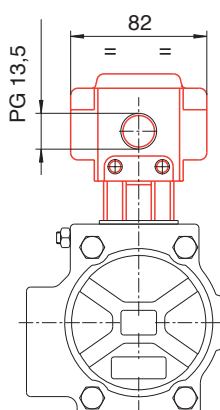
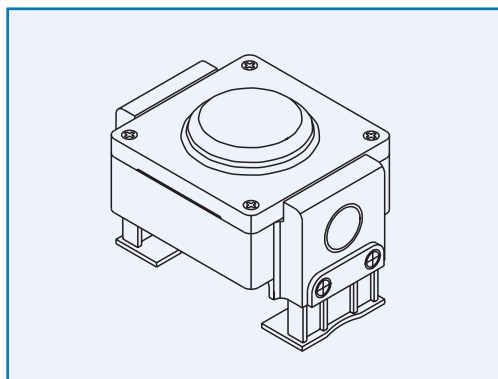
	PER ORDINAZIONE <i>For order</i>
BASE ISO 1/8" GAS <i>Iso plate 1/8" gas</i>	RI 3135

LA BASE ISO E' NECESSARIA SU TUTTI I MODELLI DELL'ATTUATORE VALBIA QUANDO SI VUOLE INTERFACCIARE UNA ELETTROVALVOLA ISO 5599/1.

*ISO plate is necessary for all actuator models, in order to assemble an ISO 5599/1 solenoid valve.*

# BOX MICRO IP65

## IP65 LIMIT SWITCH BOX



\*30 PER MOD. 115-125-160-200-270  
\*30 For mod.115-125-160-200-270

\*\*87 PER MOD. 115-125-160-200-270  
\*\*87 For mod.115-125-160-200-270

### PRINCIPALI CARATTERISTICHE / Main characteristics

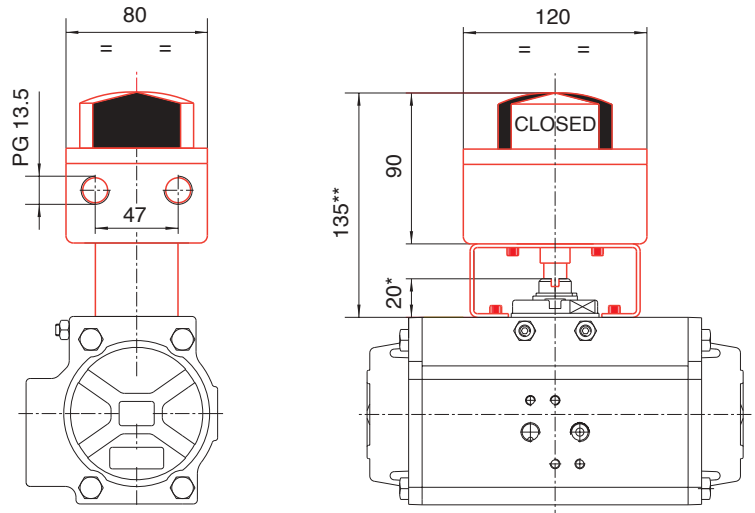
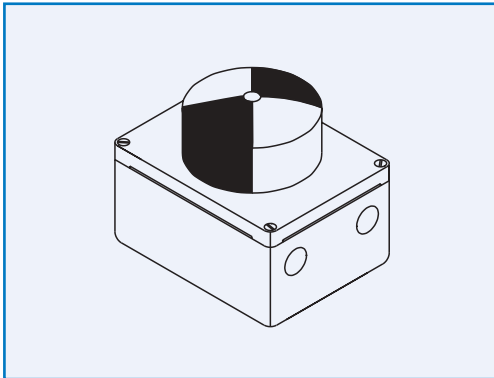
<b>MATERIALE CORPO</b> Body material	TECNOPOLIMERO RINFORZATO AUTOESTINGUENTE V0	Auto extinguish reinforced tecnopolymer V0
<b>MATERIALE COPERCHIO</b> Cover material	POLICARBONATO (RESIST. AD UV E AUTOESTINGUENTE)	Poly-carbonate (UV resistant and auto extinguish)
<b>MATERIALE ALBERO</b> Shaft material	TECNOPOLIMERO RINFORZATO	Reinforced tecno-polymer
<b>VITERIA</b> Screws	ACCIAIO INOX	Stainless steel
<b>GRADO DI PROTEZIONE</b> Protection	IP 65	IP 65
<b>TEMPERATURA DI ESERCIZIO</b> Working temperature	DA -15°C A +80°C	-15°C +80°C
<b>CAMME DI REGOLAZIONE</b> Adjusting cam	INDIPENDENTI	Independent
<b>INGRESSO CAVO</b> Cable entry	PG 13.5 (1/2" NPT O M20X1,5 OPZIONALE)	PG 13.5 (1/2" NPT or M20x1,5 optional)

### VERSIONI STANDARD / Standard versions

VERSIONI STANDARD / Standard versions	MODELLO Model	PER ORDINAZIONE For order
<b>2 FINECORSA ELETTROMECCANICI SPDT MAX 5A 250 V AC / 3A 24 V DC</b> 2 Electromechanical SPDT limit switches max 5A 250 V AC/3A 24 V DC	DA 52 A 270 From 52 to 270	03900000034
	PER 32 For 32	03900000037
<b>2 NAMUR INDUTTIVI P+F NJ2-V3-N (2 FILI NON AMPLIFICATI) EEx ia IIC T6</b> 2 Inductive Namur P+F NJ2-V3-N (2 wire not amplified) EEx ia IIC T6	DA 52 A 270 From 52 to 270	03900000035
	PER 32 For 32	03900000039
<b>2 NAMUR INDUTTIVI PNP NO P+F NBB2-V3-E2 (3 FILI AMPLIFICATI) 10-30V DC MAX 200 mA</b> 2 Inductive Namur PNP NO P+F NBB2-V3-E2 (3 wire amplified) 10-30V DC max 200m A	DA 52 A 270 From 52 to 270	03900000036
	PER 32 For 32	03900000040

# BOX MICRO IP67

## IP67 LIMIT SWITCH BOX



\*30 PER mod. 115-125-160-200-270  
\*30 for mod. 115-125-160-200-270

\*\*145 PER mod. 115-125-160-200-270  
\*\*145 for mod. 115-125-160-200-270

### PRINCIPALI CARATTERISTICHE / Main characteristics

MATERIALE CORPO <i>Body material</i>	ALLUMINIO FOSFOCROMATATO E VERNICIATO CON POLVERI POLIESTERE	Chromate aluminium, polyester powder coated
MATERIALE COPERCHIO <i>Cover material</i>	POLICARBONATO (RESIST. AD UV ED AUTOESTINGUENTE)	Ply-carbonate (UV resistant and auto extinguish)
MATERIALE ALBERO <i>Shaft material</i>	ACCIAIO INOX	Stainless steel
STAFFADI MONTAGGIO SU ATTUATORE <i>Mounting kit for actuator</i>	ACCIAIO INOX	Stainless steel
VITERIA <i>Screws</i>	ACCIAIO INOX	Stainless steel
GRADO DI PROTEZIONE <i>Protection</i>	IP 67	IP 67
TEMPERATURA DI ESERCIZIO <i>Working temperature</i>	DA -20°C A +80°C	-20°C +80°C
CAMME DI REGOLAZIONE <i>Adjusting cam</i>	INDIPENDENTI (MILLE RIGHE)	Indipendent (splined)
INDICATORE DI POSIZIONE <i>Position indicator</i>	TRIDIMENSIONALE VISIBILE A DISTANZA	Tri-dimensional, high sized
INGRESSO CAVO <i>Cable entry</i>	PG 13.5 (1/2"NPT O M20X1.5 OPZIONALI)	PG 13.5 (1/2"NPT or M20X1.5 optional)

### VERSIONI STANDARD / Standard versions

### PER ORDINAZIONE For order

2 FINECORSA ELETTROMECCANICI SPDT MAX 5A 250V AC/3A 24 V DC <i>2 Electromechanical limit switches SPDT Max 5A 250V AC/3A 24 V DC</i>	0390000009
2 FINECORSA INDUTTIVI NAMUR P+F SJ3,5-N 2 FILI NON AMPLIFICATI EExia IIC T6 <i>2 Inductive Namur limit switches P+F SJ3,5-N 2 wire not amplified EExia IIC T6</i>	03900000015
2 NAMUR INDUTTIVI P+F NJ2 V3 N 2 FILI NON AMPLIFICATI EExia IIC T6 <i>2 Inductive Namur P+F NJ2 V3 N 2 wire not amplified EExia IIC T6</i>	03900000054
2 INDUTTIVI P+F NBB2 V3 E2 3 FILI AMPLIFICATI 10-30 V DC 200mA <i>2 Inductive P+F NBB2 V3 E2 3 wire not amplified 10-30 V DC 200 mA</i>	03900000055

### STAFFE MONTAGGIO / Mounting kit

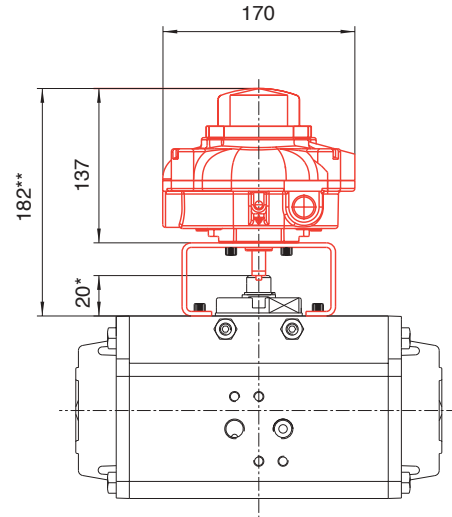
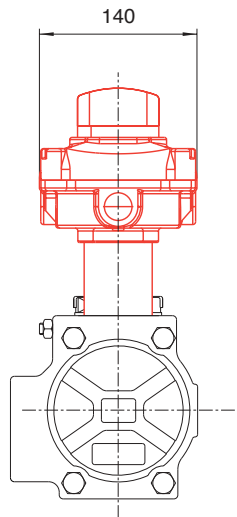
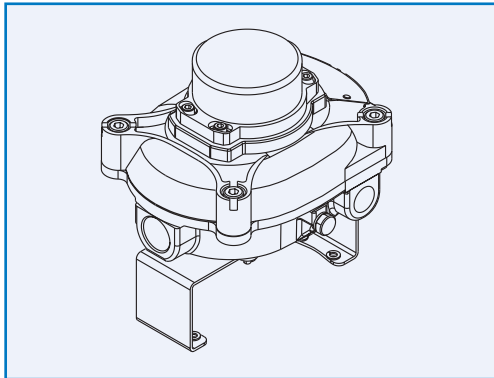
### PER ORDINAZIONE For order

PER ATTUATORE 32 <i>For actuators 32</i>	04800000010
PER ATTUATORE DA 52 A 100 <i>For actuators from 52 to 100</i>	04800000011
PER ATTUATORE DA 115 a 270 <i>For actuators from 115 to 270</i>	04800000012



# BOX MICRO ANTIDEFLAGRANTE

## EXPLOSION PROOF LIMIT SWITCH BOX



\*30 PER MOD. 115-125-160-200-270  
 \*30 For mod. 115-125-160-200-270

\*\*192 PER MOD. 115-125-160-200-270  
 \*\*192 For mod. 115-125-160-200-270

### PRINCIPALI CARATTERISTICHE / Main characteristics

<b>TIPO</b> Type	ANTI DEFLAGRANTE SECONDO EEx d II B T4/T5/T6	Explosion proof according to EEx d II B T4/T5/T6
<b>MATERIALE CORPO</b> Body material	ALLUMINIO FOSFOCROMATATO E VERNICIATO CON POLVERI POLIESTERE	Chromate aluminium, polyester powder coated
<b>MATERIALE COPERCHIO</b> Cover material	ALLUMINIO FOSFOCROMATATO E VERNICIATO CON POLVERI POLIESTERE	Chromate aluminium, polyester powder coated
<b>MATERIALE ALBERO</b> Shaft material	ACCIAIO INOX	Stainless steel
<b>INGRESSO CAVI</b> Cable entry	N°2 1/2" NPT (M20X1,5 OPZIONALE) N°1 G3/4" (M25X1,5 OPZIONALE)	N°2 1/2" NPT (M20X1,5 optional) N°1 G3/4" (M25X1,5 optional)
<b>GRADO DI PROTEZIONE</b> Protection	IP 67	IP 67

### VERSIONE STANDARD / Standard version

### PER ORDINAZIONE For order

2 FINECORSO ELETTROMECCANICI MAX 5A 250V AC - 3A 24V DC MIN 50mA 250V AC-50mA 24V DC 2 Electromechanical limit switches max 5A 250V AC - 3A 24V DC min 50mA 250V AC-50mA 24V DC	03900000053
--	-------------

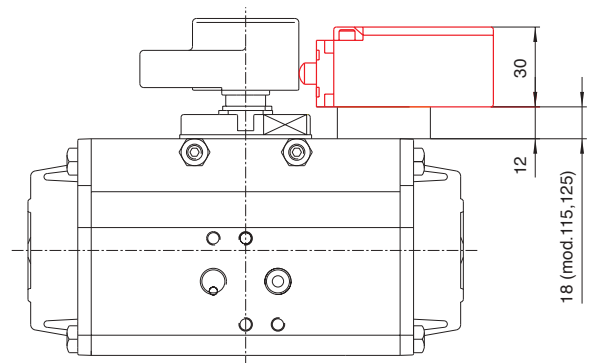
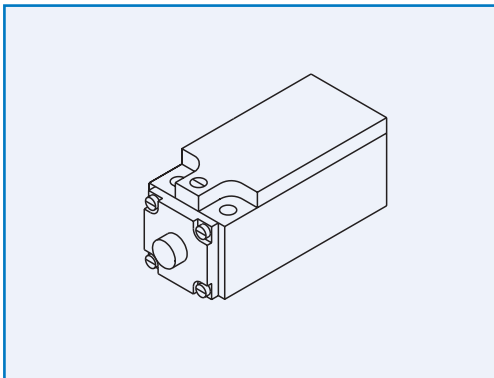
### STAFFE MONTAGGIO / Mounting kit

### PER ORDINAZIONE For order

PER ATTUATORE 32 For actuator 32	04800000010
PER ATTUATORE DA 52 A 100 For actuator from 52 to 100	04800000011
PER ATTUATORE DA 115 A 270 For actuator from 115 to 270	04800000012

# SCHEMA DI MONTAGGIO MICRO FINECORSA ELETTROMECCANICO TELEMECANIQUE XCK-P110

ASSEMBLY SCHEME FOR TELEMECANIQUE XCK-P110 ELECTROMECHANICAL LIMIT SWITCH



**PER ORDINAZIONE FINECORSA**

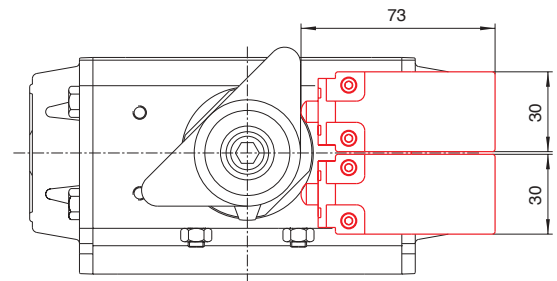
For order of limit switch

RI 4501

**PER ORDINAZIONE KIT DI MONTAGGIO**

For order of mounting kit

MOD. 32	RI 4529
MOD. 52	RI 4519
MOD. 63-75-85-100	RI 4520
MOD. 115-125	RI 4521
MOD. 160	RI 4522
MOD. 200-270	RI 4528



**PRINCIPALI CARATTERISTICHE / Main characteristics**

<b>MATERIALE CORPO</b> Body material	PLASTICA	Plastic
<b>CONFORMITA' ALLE NORME</b> In compliance with normative	CENELEC EN 50047, IEC 337-1, NFC 63 -140, VDE 660-200	CENELEC EN 50047, IEC 337-1, NFC 63 -140, VDE 660-200
<b>TRATTAMENTO DI PROTEZIONE</b> Treatment protection	TC E TH	TC and TH
<b>TEMPERATURA DI FUNZIONAMENTO</b> Working temperature	DA -25°C A +70°C	From -25°C to +70°C
<b>GRADO DI PROTEZIONE</b> Protection	IP 65 SECONDO IEC 529	IP 65 according to IEC 529
<b>DURATA MECCANICA</b> Mechanical durability	15 MILIONI DI CICLI	15 million cycles
<b>ENTRATA CAVI</b> Cable entry	1 ENTRATA PER PG 11. CAPACITÀ DI SERRAGGIO DA 8 A 10mm	One entry for PG11. Tightening capability from 8 to 10 mm

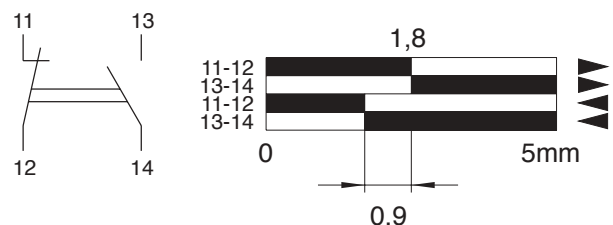
**DESCRIZIONE**  
Description

**CHIUSO**  
Closed  
 **APERTO**  
Open

**A PULSANTE IN ACCIAIO**  
With steel button

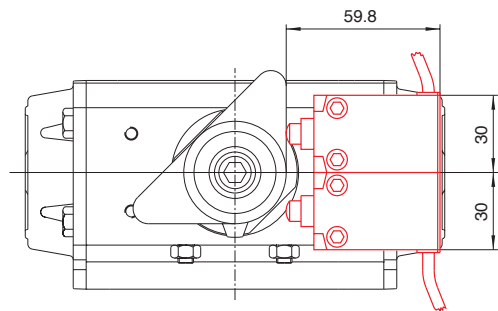
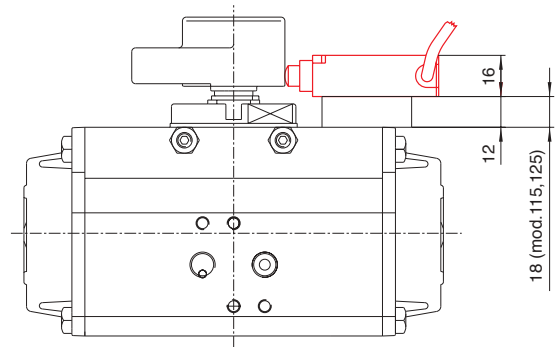
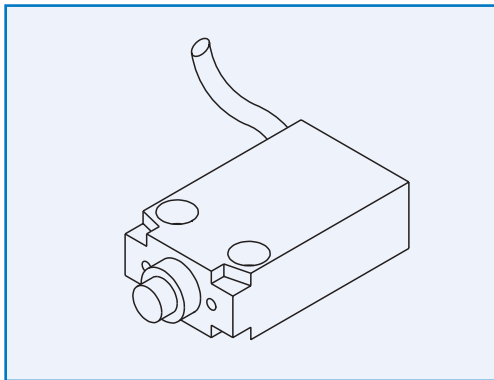
"NC.NO"  
UNIPOLARE  
"NC.NO" single pole

**FUNZIONAMENTO DEI CONTATTI**  
Contacts functioning



# SCHEMA DI MONTAGGIO MICRO FINECORSA ELETTROMECCANICO TELEMECANIQUE XCM-A110

ASSEMBLY SCHEME FOR TELEMECANIQUE XCM-A110 ELECTROMECHANICAL LIMIT SWITCH



**PER ORDINAZIONE FINECORSA**

For order of limit switch

RI 4500

**PER ORDINAZIONE KIT DI MONTAGGIO**

For order of mounting kit

MOD. 32	RI 4529
MOD. 52	RI 4519
MOD. 63-75-85-100	RI 4520
MOD. 115-125	RI 4521
MOD. 160	RI 4522
MOD. 200-270	RI 4528

**PRINCIPALI CARATTERISTICHE / Main characteristics**

<b>MATERIALE CORPO</b> Body material	ACCIAIO	Steel
<b>CONFORMITA' ALLE NORME</b> In compliance with normative	IEC 337-1, NF C 63 -140, NF C63 -145 CLASSE Y2, VDE 0660-200	IEC 337-1, NF C 63 -140, NF C63 -145 class Y2, VDE 0660-200
<b>TRATTAMENTO DI PROTEZIONE</b> Treatment protection	"TC"	"TC"
<b>TEMPERATURA DI FUNZIONAMENTO</b> Working temperature	DA -25°C A +70°C	From -25°C to +70°C
<b>GRADO DI PROTEZIONE</b> Protection	IP 67 SECONDO IEC 529	IP 67 according to IEC 529
<b>DURATA MECCANICA</b> Mechanical durability	10 MILIONI DI CICLI	10 million cycles
<b>COLLEGAMENTI</b> Connections	CON CAVO FLESSIBILE A 5 CONDUTTORI DI 0.75 mm <sup>2</sup> , lungh. 2 m.	Two meter flexible cable, with 5 lead-in wires of 0.75 mm <sup>2</sup>

**DESCRIZIONE**  
Description

**CHIUSO**  
Closed

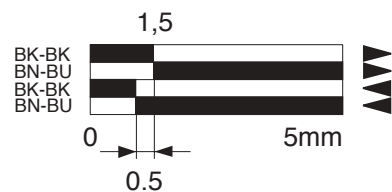
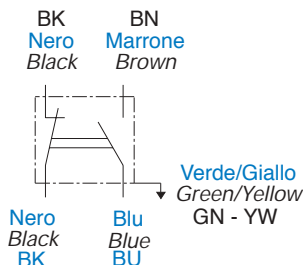


**A PULSANTE IN ACCIAIO**  
With steel button

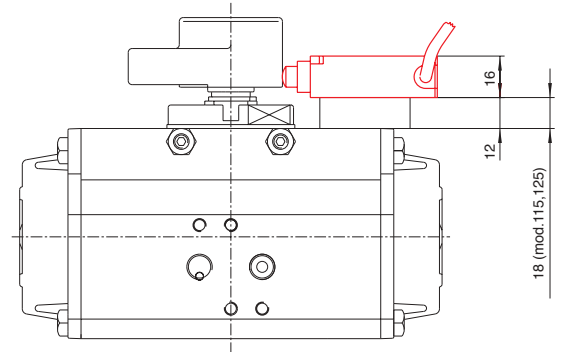
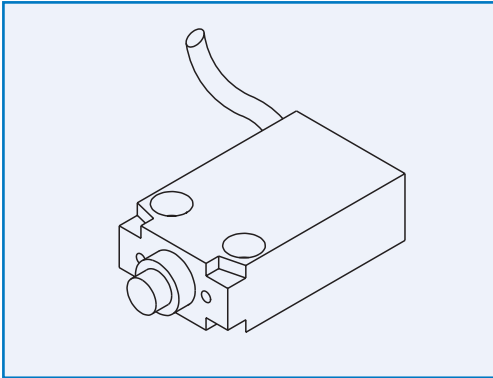


**APERTO**  
Open

**FUNZIONAMENTO DEI CONTATTI**  
Contacts functioning



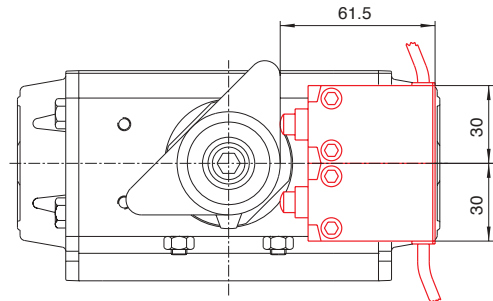
**SCHEMA DI MONTAGGIO MICRO FINECORSA ELETTROMECCANICO  
A SICUREZZA INTRINSECA TELEMECANIQUE XCW-A110 EExd IIC T6**  
ASSEMBLY SCHEME FOR ELECTROMECHANICAL LIMIT SWITCH INTRINSICALLY SAFE  
TELEMECANIQUE XCW-A110 EExd IIC T6



**PER ORDINAZIONE FINECORSA**  
For order of limit switch  
RI 4502

**PER ORDINAZIONE KIT DI MONTAGGIO**  
For order of mounting kit

MOD. 32	RI 4529
MOD. 52	RI 4519
MOD. 63-75-85-100	RI 4520
MOD. 115-125	RI 4521
MOD. 160	RI 4522
MOD. 200-270	RI 4528



**PRINCIPALI CARATTERISTICHE / Main characteristics**

<b>MATERIALE CORPO</b> Body material	ACCIAIO	Steel
<b>CONFORMITA' ALLE NORME</b> In compliance with normative	IEC 337-1, NFC 63 -140, NFC -145 CLASSE Y, VDE 0660 PARTE 200	IEC 337-1, NFC 63 -140, NFC -145 class Y, VDE 0660 part 200
<b>TRATTAMENTO DI PROTEZIONE</b> Treatment protection	"TH"	"TH"
<b>TEMPERATURA DI FUNZIONAMENTO</b> Working temperature	DA -25°C A +70°C	From -25°C to +70°C
<b>GRADO DI PROTEZIONE</b> Protection	IP 67 SECONDO IEC 529	IP 67 according to IEC 529
<b>DURATA MECCANICA</b> Mechanical durability	10 MILIONI DI CICLI	10 million cycles
<b>COLLEGAMENTI</b> Connections	CON CAVO FLESSIBILE A 5 CONDUTTORI DI 0.75 mm LUNGHEZZA 1 METRO	One meter flexible cable, with 5 lead-in wires of 0.75 mm <sup>2</sup>

**DESCRIZIONE**  
Description

**CHIUSO**  
Closed

**APERTO**  
Open

**A PULSANTE IN ACCIAIO**  
With steel button

**FUNZIONAMENTO DEI CONTATTI**  
Contacts functioning

BK Nero Black  
BN Marrone Brown

BK-BK  
BN-BU  
BK-BK  
BN-BU

Verde/Giallo Green/Yellow  
GN - YW

Nero/Bianco Black/White  
BK/WH

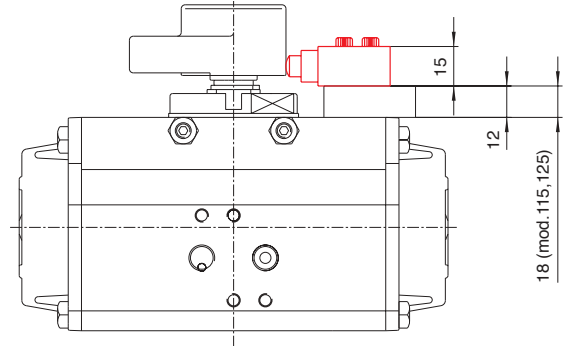
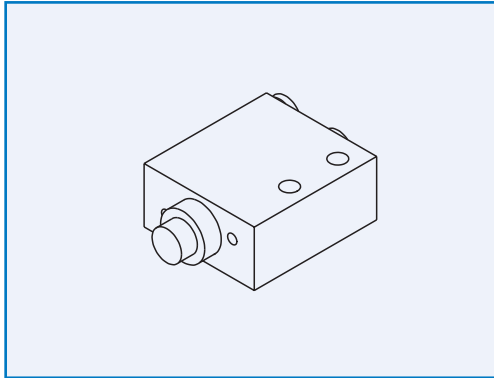
Blu Blue  
BU

1,5

0 1 5mm

# SCHEMA DI MONTAGGIO MICRO FINECORSA PNEUMATICO 304 MA

ASSEMBLY SCHEME FOR PNEUMATIC LIMIT SWITCH 304 MA



**PER ORDINAZIONE FINECORSA**

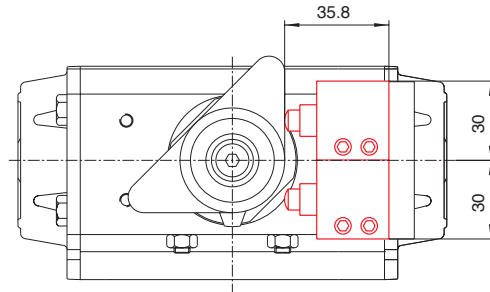
For order of limit switch

RI 4506

**PER ORDINAZIONE KIT DI MONTAGGIO**

For order of mounting kit

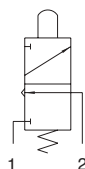
- |                   |         |
|-------------------|---------|
| MOD. 32           | RI 4529 |
| MOD. 52           | RI 4519 |
| MOD. 63-75-85-100 | RI 4520 |
| MOD. 115-125      | RI 4521 |
| MOD. 160          | RI 4522 |
| MOD. 200-270      | RI 4528 |



**PRINCIPALI CARATTERISTICHE / Main characteristics**

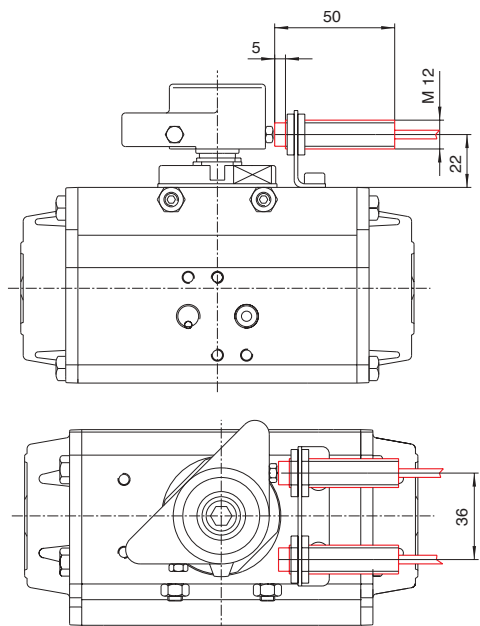
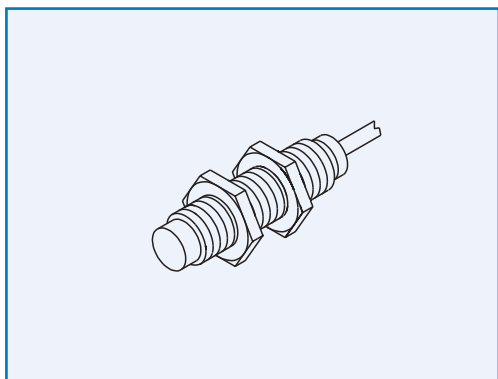
<b>MATERIALE CORPO</b> <i>Body material</i>	ALLUMINIO ANODIZZATO	Aluminum anodized
<b>DIAMETRO NOMINALE</b> <i>Nominal diameter</i>	2.5mm	2.5mm
<b>PORTATA NOMINALE A 6 bar</b> <i>Nominal flow at 6 bar</i>	120 NI/min	120 NI/min
<b>TEMPERATURA DI FUNZIONAMENTO</b> <i>Working temperature</i>	DA -10°C A +60°C	-10°C to +60°C
<b>PRESSIONE DI ESERCIZIO</b> <i>Working pressure</i>	DA 2 A 10 bar	2 to 10 bar
<b>FLUIDO</b> <i>Supply medium</i>	ARIA FILTRATA 50µ E LUBRIFICATA	Filtered air 50 µ and lubricated
<b>STATO</b> <i>State</i>	NORMALMENTE CHIUSO	Normally closed
<b>PARTI INTERNE</b> <i>Internal parts</i>	OTTONE	Brass
<b>GUARNIZIONI</b> <i>Seals</i>	NBR	NBR
<b>MOLLE</b> <i>Springs</i>	ACCIAIO INOX	Stainless steel

**FUNZIONAMENTO DEI CONTATTI**  
*Contacts functioning*



# SCHEMA DI MONTAGGIO FINECORSA INDUTTIVI PEPPERL+FUCHS NBN4-12GM50-E2

ASSEMBLY SCHEME FOR PEPPERL+FUCHS NBN4-12GM50-E2 INDUCTIVE LIMIT SWITCHES



### PER ORDINAZIONE FINECORSA

For order of limit switch

03900007017

### PER ORDINAZIONE KIT DI MONTAGGIO

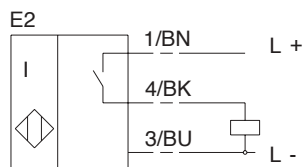
For order of mounting kit

MOD. 32	RI 4530
MOD. 52	RI 4523
MOD. 63-75-85-100	RI 4524
MOD. 115-125	RI 4525
MOD. 160	RI 4526
MOD. 200-270	RI 4527

### PRINCIPALI CARATTERISTICHE / Main characteristics

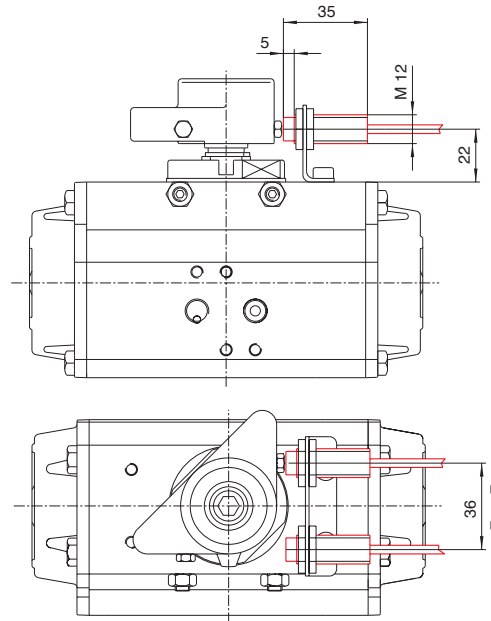
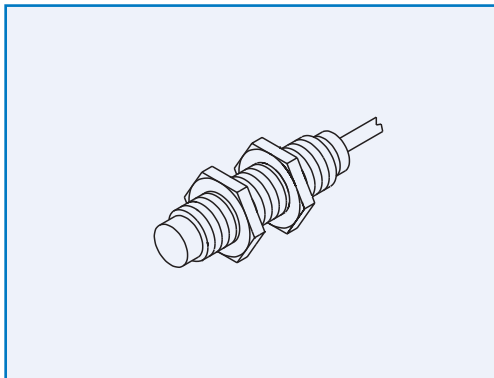
TIPO Type	CILINDRICI FILETTATI M12X1 A TRE FILI Cylindrical, threaded M12x1, three wires
FATTORE DI RIDUZIONE Reduction factor	rv2A: 0.8 - rAl: 0.5 - rCu: 0.4
DISTANZA DI COMMUTAZIONE S <sub>n</sub> INSTALLAZIONE Operating distance S <sub>n</sub> mounting	4mm NON INCORPORABILE 4mm not embeddable
DISTANZA DI COMMUTAZIONE NOMINALE S <sub>a</sub> Assured operating distance S <sub>a</sub>	DA 0 A 3.24 mm. 0 to 3.24 mm.
TENSIONE D'ESERCIZIO U <sub>b</sub> Operating voltage	DA 10 A 30 V 10 to 30 V
CORRENTE D'ESERCIZIO I <sub>L</sub> Working current	200 mA
FREQUENZA DI COMMUTAZIONE Switching frequency	1200 Hz
CORRENTE A VUOTO I <sub>o</sub> No-load supply current	17 mA
CADUTA TENSIONE U <sub>d</sub> Voltage drop	3 V
PROTEZIONE DA CORTOCIRCUITI Short circuit protection	A FASI Pulsing
PROTEZIONE ERRORE COLLEGAMENTO Reverse polarity protection	SI Yes
INDICATORE DELLO STATO DI COMMUTAZIONE Output indicator	LED GIALLO Led, yellow
TEMPERATURA DI FUNZIONAMENTO Working temperature	DA -25°C A +70°C -25°C to +70°C
SODDISFA LA NORMA In compliance with	EN60947 - 5 - 2
GRADO DI PROTEZIONE Protection	IP67
TIPO D'ALLACCIAMENTO Connection	2 m CAVO IN PVC 2 m cable in PVC
SEZIONE DEL FILO Conductor cross section	0.14 mm <sup>2</sup>
MATERIALE DELLA CUSTODIA Housing material	OTTONE Brass
MATERIALE PIANO FRONTALE Sensing face	PBT

### SCHEMA ELETTRICO Electric wiring



# SCHEMA DI MONTAGGIO FINECORSA INDUTTIVI EEXIA PEPPERL+FUCHS NCN4-12GM35-NO

ASSEMBLY SCHEME FOR PEPPERL+FUCHS NCN4-12GM35-NO EEXIA INDUCTIVE LIMIT SWITCHES

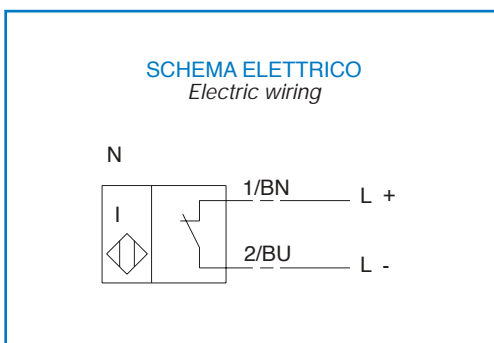


**PER ORDINAZIONE FINECORSA**  
For order of limit switch  
03900007018

**PER ORDINAZIONE KIT DI MONTAGGIO**  
For order of mounting kit

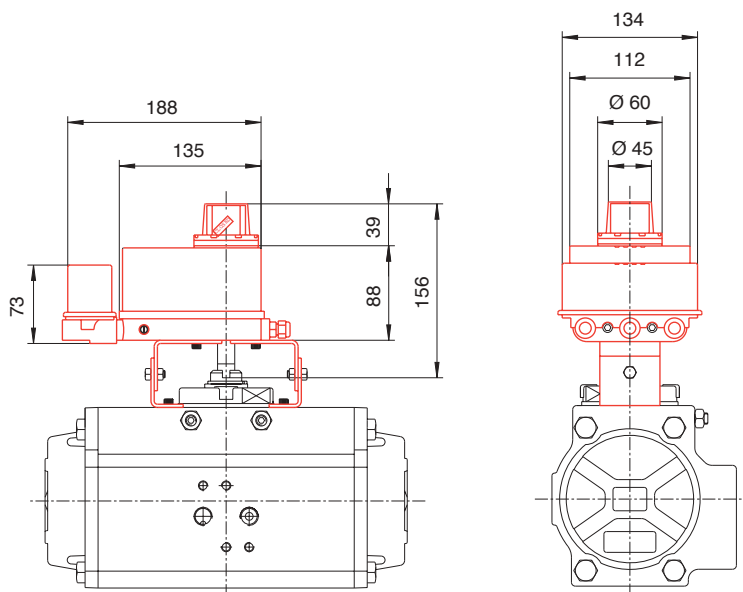
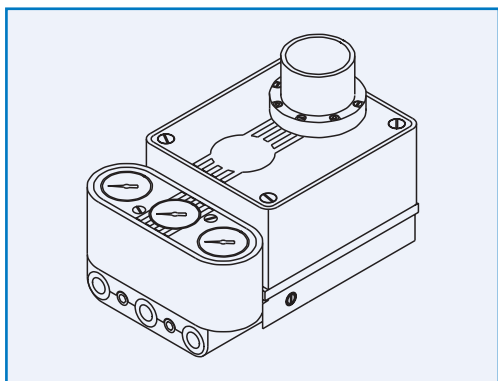
MOD. 32	RI 4530
MOD. 52	RI 4523
MOD. 63-75-85-100	RI 4524
MOD. 115-125	RI 4525
MOD. 160	RI 4526
MOD. 200-270	RI 4527

PRINCIPALI CARATTERISTICHE / Main characteristics	
<b>TIPO</b> Type	CILINDRICI FILETTATI M12X1 A DUE FILI Cylindrical, threaded M12x1, two wires
<b>FATTORE DI RIDUZIONE</b> Reduction factor	rV2A: 0.74 - rAl: 0.37 - rCu: 0.36
<b>DISTANZA DI COMMUTAZIONE S<sub>n</sub> SU INSTALLAZIONE</b> Operating distance S <sub>n</sub> mounting	4mm NON INCORPORABILE 4mm not embeddable
<b>DISTANZA DI COMMUTAZIONE NOMINALE S<sub>a</sub></b> Assured operating distance S <sub>a</sub>	
<b>TENSIONE NOMINALE</b> Nominal voltage	
<b>ASSORBIMENTO CORRENTE</b> Current consumption	
<b>INTERCETTATORE RILEVATO</b> Sensing face covered	1 mA
<b>INTERCETTATORE NON RILEVATO</b> Sensing face free	3 mA
<b>FREQUENZA DI COMMUTAZIONE</b> Switching frequency	1800 Hz
<b>INDUTTANZA PROPRIA L<sub>i</sub></b> Self inductance	36 µH
<b>CAPACITA' PROPRIA C<sub>i</sub></b> Self capacitance	75 nF
<b>INDICATORE DELLO STATO DI COMMUTAZIONE</b> Output indicator	LED GIALLO LED yellow
<b>CONFORME A EMV</b> In compliance to EMV	EN 60947 - 5 - 2
<b>SODDISFA LA NORMA</b> In compliance with	DIN 19234
<b>GRADO DI PROTEZIONE</b> Protection	IP67
<b>TEMPERATURA DI FUNZIONAMENTO</b> Working temperature	DA -25°C A +100°C -25 to +100
<b>CONNESSIONI ELETTRICHE</b> Connections	2m cavo in PVC 2m cable in PVC
<b>SEZIONE DEL FILO</b> Conductor cross section	0.34 mm <sup>2</sup>
<b>MATERIALE DELLA CUSTODIA</b> Housing material	ACCIAIO LEGATO High grade steel
<b>MATERIALE PIANO FRONTALE</b> Sensing face	PBT



# POSIZIONATORE PNEUMATICO ED ELETTROPNEUMATICO

## PNEUMATIC AND ELECTRO-PNEUMATIC POSITIONER

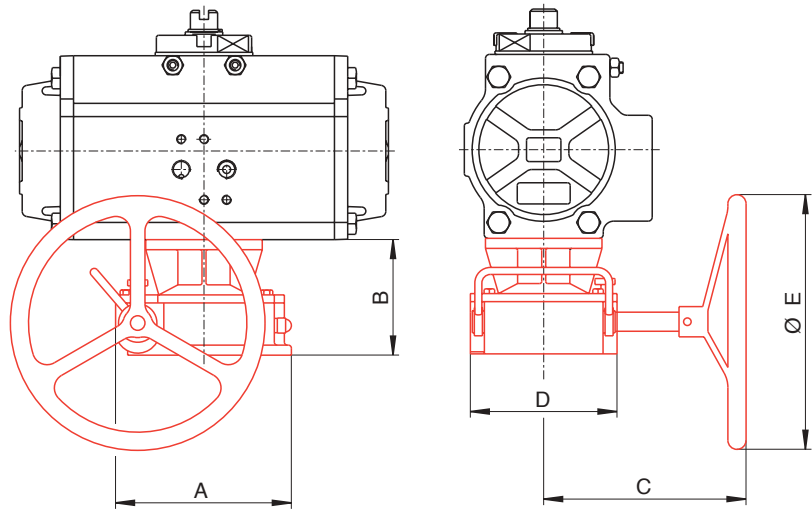
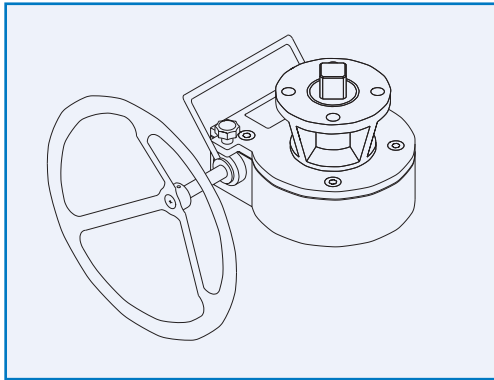


PRINCIPALI CARATTERISTICHE / Main characteristics		
	PNEUMATICO / Pneumatic	ELETTROPNEUMATICO / Electro-Pneumatic
<b>MATERIALE CORPO</b> <i>Body material</i>	ALLUMINIO PRESSOFUSO VERNICIATUIRA ANTIACIDA <i>Die cast aluminium, anti-acid paint</i>	ALLUMINIO PRESSOFUSO VERNICIATUIRA ANTIACIDA <i>Die cast aluminium, anti-acid paint</i>
<b>GRADO DI PROTEZIONE</b> <i>Protection</i>	IP55	IP55
<b>CONNESSIONE PNEUMATICHE</b> <i>Pneumatic connections</i>	1/4" NPT	1/4" NPT
<b>CONNESSIONI ELETTRICHE</b> <i>Electric connections</i>	/	PRESSACAVO PG9, MORSETTO INTERNO CONN. Ø DA 0,5 A Ø 1,5 mm <i>Plug PG9, Internal strip, connection Ø 0,5 to 1,5 mm</i>
<b>ALIMENTAZIONE ARIA</b> <i>Air supply</i>	DA 3 A 10 bar <i>3 to 10 bar</i>	DA 3 A 10 bar <i>3 to 10 bar</i>
<b>INGRESSO</b> <i>Inlet</i>	3 ÷ 15 psi (0.2 ÷ 1 bar)	4 ÷ 20 mA (0 - 20mA, 1 - 5V, 1 - 10V)
<b>USCITA</b> <i>Outlet</i>	DA 0 A 100% DELLA PRESSIONE DI ALIMENTAZIONE <i>0 to 100% of air supply</i>	DA 0 A 100% DELLA PRESSIONE DI ALIMENTAZIONE <i>0 to 100% of air supply</i>
<b>IMPEDENZA ENTRATA</b> <i>Input impedance</i>	/	MAX 250 Ω
<b>TENSIONE INGRESSO</b> <i>Input tension</i>	/	≤ 30 V
<b>CORRENTE INGRESSO</b> <i>Input current</i>	/	≤ 150 mA
<b>ASSORBIMENTO</b> <i>Absorption</i>	/	≤ 80 W
<b>CAMMA (AZIONE DIRETTA E INVERSA)</b> <i>Cam (direct and reverse action)</i>	0 ÷ 90° / 3 ÷ 15 psi STANDARD	0 ÷ 90° / 4 ÷ 20 mA STANDARD
<b>ISTERESI</b> <i>Hysteresis</i>	≤ 0.6%	≤ 1.0%
<b>CONSUMO D'ARIA (6 bar)</b> <i>Air consumption (6 bar)</i>	≤ 0.8 Nm <sup>3</sup> /h	≤ 0.8 Nm <sup>3</sup> /h
<b>PORTATA (6 bar)</b> <i>Flow (6 bar)</i>	REGOLABILE DA 1 A 22 Nm <sup>3</sup> /h <i>Adjustable from 1 to 22 Nm<sup>3</sup>/h</i>	REGOLABILE DA 1 A 22 Nm <sup>3</sup> /h <i>Adjustable from 1 to 22 Nm<sup>3</sup>/h</i>
<b>LINEARITA'</b> <i>Linearity</i>	≤ 1.7%	≤ 2.0%
<b>TEMPERATURA DI FUNZIONAMENTO</b> <i>Working temperature</i>	DA -20°C A +80°C <i>-20 to +80°C</i>	DA -20°C A +70°C <i>-20 to +70°C</i>
<b>PESO</b> <i>Weight</i>	2.3 Kg	2.4 Kg
<b>PER ORDINAZIONE</b> <i>For order</i>	31600000005	31600000004



# RIDUTTORE MANUALE DISINSERIBILE

## DECLUTCHABLE GEAR OPERATOR



### PRINCIPALI CARATTERISTICHE / Main characteristics

<b>MATERIALE CORPO</b> <i>Body material</i>	ALLUMINIO O GHISA PROTETTI DA VERNICIATURA	Aluminium or cast iron, painted
<b>MATERIALE COPERCHIO</b> <i>Cover material</i>	ALLUMINIO O GHISA PROTETTI DA VERNICIATURA	Aluminium or cast iron, painted
<b>MATERIALE STELO</b> <i>Shaft material</i>	ACCIAIO INOX	Stainless steel
<b>MATERIALE SETTORE DENTATO</b> <i>Gear segment</i>	GHISA	Cast iron
<b>MOMENTO TORCENTE</b> <i>Torque</i>	DA 250 Nm A 2500 Nm	From 250 Nm to 2500 Nm
<b>CORSA</b> <i>Stroke</i>	90°± 5°	90°± 5°
<b>TEMPERATURA DI ESERCIZIO</b> <i>Working temperature</i>	-20°C +120°C	-20°C +120°C

MOD.	A mm.	B mm.	C mm.	D mm.	ØE mm.
RD232-07	175	115	181	146	200
RD232-07	175	115	181	146	200
RD232-10	175	130	181	146	200
RD550	175	143	203	140	315
RD880	226	152	247	200	400
RD1250	258	170	282	220	400
RD6800	402	200	416	370	800

RAPPORTO DI RIDUZIONE <i>Gear ratio</i>	COPPIA MAX USCITA (Nm) <i>Output torque (Nm)</i>
37:1	250
37:1	250
37:1	250
56:1	500
42:1	950
50:1	1250
89:1	2500

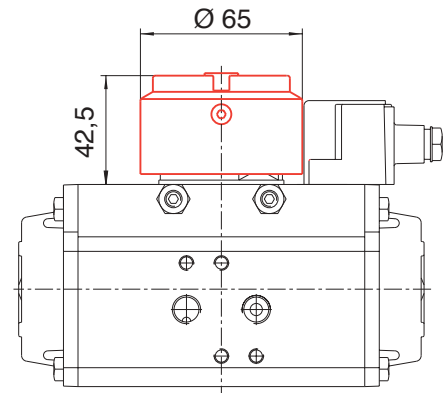
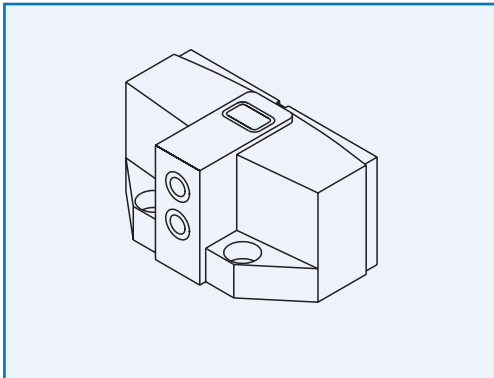
MODELLO ATTUATORE <i>Actuator model</i>	PER ORDINAZIONE <i>For order</i>
63	0470000001
75-85-100	0470000002
115	0470000003
125	0470000004
160	0470000006
200	0470000007
270	0470000012

# KIT DI MONTAGGIO PER FINECORSA INDUTTIVI PEPPERL+FUCHS

## MOUNTING KIT FOR PEPPERL+FUCHS INDUCTIVE LIMIT SWITCHES

### PEPPERL+FUCHS SERIE F31

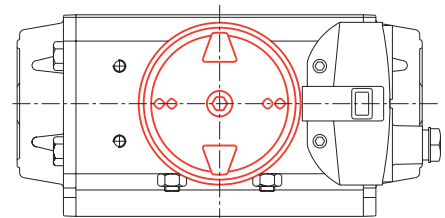
PEPPERL+FUCHS MODEL F31



**PER ORDINAZIONE (FINECORSA ESCLUSO)**  
*For order (limit switch excluded)*

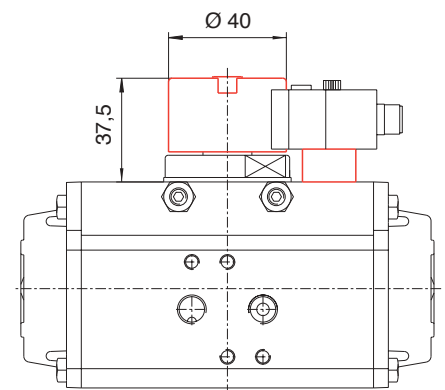
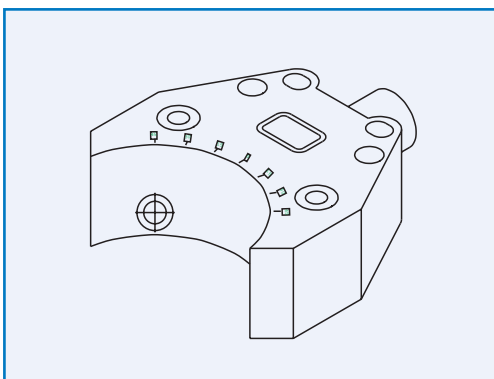
MOD. 52 ÷ 100

RI 3373



### PEPPERL+FUCHS SERIE F25

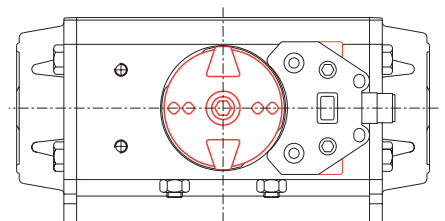
PEPPERL+FUCHS MODEL F25



**PER ORDINAZIONE (FINECORSA ESCLUSO)**  
*For order (limit switch excluded)*

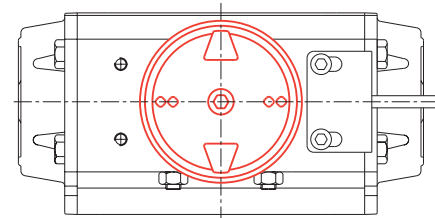
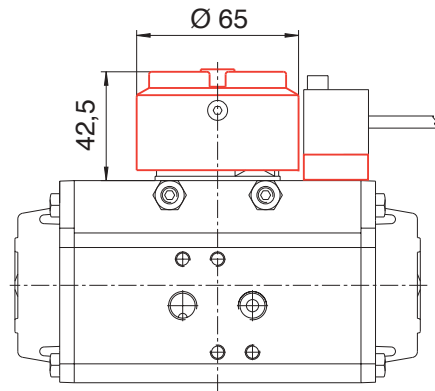
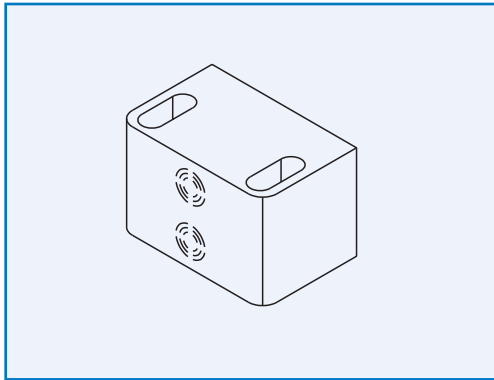
MOD. 52 ÷ 100

RI 3371



## KIT DI MONTAGGIO PER FINECORSA INDUTTIVI IFM

MOUNTING KIT FOR INDUCTIVE IFM LIMIT SWITCHES



**PER ORDINAZIONE (FINECORSA ESCLUSO)**

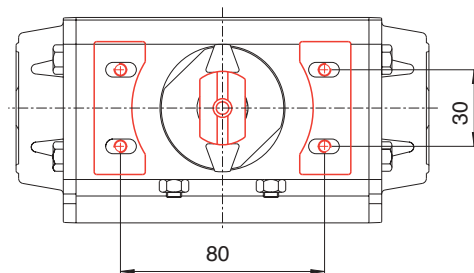
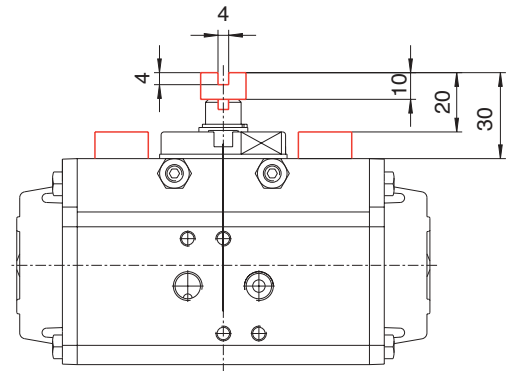
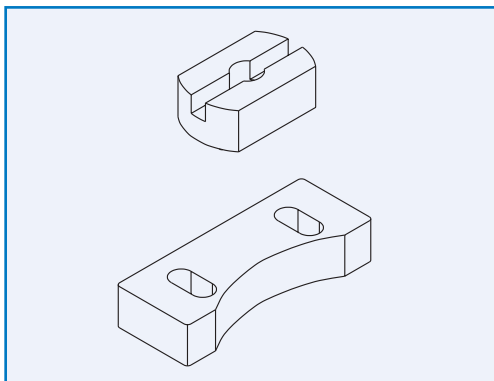
*For order (limit switch excluded)*

MOD. 52 ÷ 100

RI 3372

## ADATTATORE NAMUR

NAMUR ADAPTER



**PER ORDINAZIONE**

*For order*

RI 3349

**IL MONTAGGIO DELL'RI 3349 CONSENTE DI RIPRISTINARE L'INTERFACCIA PER ACCESSORI VDI/VDE 3845 QUALORA L'INGOMBRO DELLA CAMMA IMPEDISCA IL LORO MONTAGGIO**

*The assembly of article RI 3349 permit to restore the Namur drilling for the assembly of accessories VDI/VDE 3845, if the cam dimension does not permit their assembly.*